

Product Name: GATA-2 (phospho Ser401) Rabbit Polyclonal Antibody
Catalog #: APRab04725

Summary

Production Name	GATA-2 (phospho Ser401) Rabbit Polyclonal Antibody
Description	Rabbit Polyclonal Antibody
Host	Rabbit
Application	WB
Reactivity	Human,Monkey

Performance

Conjugation	Unconjugated
Modification	Phospho Antibody
Isotype	IgG
Clonality	Polyclonal
Form	Liquid
Storage	Store at 4°C short term. Aliquot and store at -20°C long term. Avoid freeze/thaw cycles.
Buffer	Liquid in PBS containing 50% glycerol, 0.5% BSA and 0.02% New type preservative N.
Purification	Affinity purification

Immunogen

Gene Name	GATA2
Alternative Names	GATA2; Endothelial transcription factor GATA-2; GATA-binding protein 2
Gene ID	2624.0
SwissProt ID	P23769.The antiserum was produced against synthesized peptide derived from human GATA2 around the phosphorylation site of Ser401. AA range:367-416

Application

Dilution Ratio	WB 1:500-1:2000. ELISA: 1:5000.
Molecular Weight	50kD

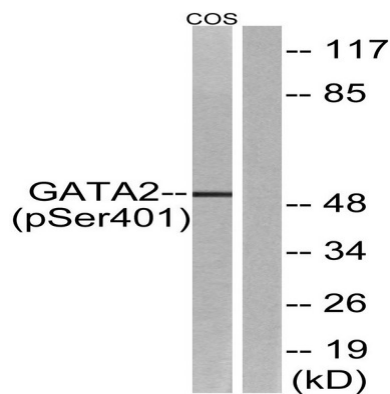
Background

Product Name: GATA-2 (phospho Ser401) Rabbit Polyclonal Antibody
Catalog #: APRab04725

This gene encodes a member of the GATA family of zinc-finger transcription factors that are named for the consensus nucleotide sequence they bind in the promoter regions of target genes. The encoded protein plays an essential role in regulating transcription of genes involved in the development and proliferation of hematopoietic and endocrine cell lineages. Alternative splicing results in multiple transcript variants.[provided by RefSeq, Mar 2009],function:Transcriptional activator which regulates endothelin-1 gene expression in endothelial cells. Binds to the consensus sequence 5'-AGATAG-3',,sequence caution:Several sequencing errors.,similarity:Contains 2 GATA-type zinc fingers.,tissue specificity:Endothelial cells.,

Research Area

Image Data



Western blot analysis of lysates from COS7 cells treated with TNF 20ng/ml 5', using GATA2 (Phospho-Ser401) Antibody. The lane on the right is blocked with the phospho peptide.

Note

For research use only.