

Product Name: GABAA R β 1 (phospho Ser434) Rabbit Polyclonal Antibody
Catalog #: APRab04721



Summary

Production Name	GABAA R β 1 (phospho Ser434) Rabbit Polyclonal Antibody
Description	Rabbit Polyclonal Antibody
Host	Rabbit
Application	ELISA,IHC,WB,
Reactivity	Human,Mouse,Rat,Monkey

Performance

Conjugation	Unconjugated
Modification	Phospho Antibody
Isotype	IgG
Clonality	Polyclonal
Form	Liquid
Storage	Store at 4°C short term. Aliquot and store at -20°C long term. Avoid freeze/thaw cycles.
Buffer	Liquid in PBS containing 50% glycerol, 0.5% BSA and 0.02% New type preservative N.
Purification	Affinity purification

Immunogen

Gene Name	GABRB1
Alternative Names	GABRB1; Gamma-aminobutyric acid receptor subunit beta-1; GABA(A) receptor subunit beta-1
Gene ID	2560.0
SwissProt ID	P18505.The antiserum was produced against synthesized peptide derived from human GABA-RB around the phosphorylation site of Ser434. AA range:401-450

Application

Dilution Ratio	WB 1:500 - 1:2000 IHC 1:100 - 1:300. ELISA: 1:40000..
Molecular Weight	55kD

Product Name: GABAA R β 1 (phospho Ser434) Rabbit Polyclonal Antibody
Catalog #: APRab04721



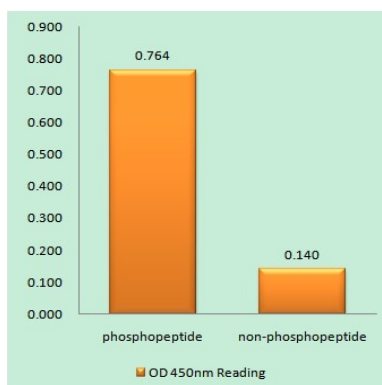
Background

The gamma-aminobutyric acid (GABA) A receptor is a multisubunit chloride channel that mediates the fastest inhibitory synaptic transmission in the central nervous system. This gene encodes GABA A receptor, beta 1 subunit. It is mapped to chromosome 4p12 in a cluster comprised of genes encoding alpha 4, alpha 2 and gamma 1 subunits of the GABA A receptor. Alteration of this gene is implicated in the pathogenetics of schizophrenia. [provided by RefSeq, Jul 2008],function:GABA, the major inhibitory neurotransmitter in the vertebrate brain, mediates neuronal inhibition by binding to the GABA/benzodiazepine receptor and opening an integral chloride channel.,online information:Forbidden fruit - Issue 56 of March 2005,similarity:Belongs to the ligand-gated ionic channel (TC 1.A.9) family.,subunit:Binds UBQLN1 (By similarity). Generally pentameric. There are five types of GABA(A) receptor chains: alpha, beta, gamma, delta, and rho.,

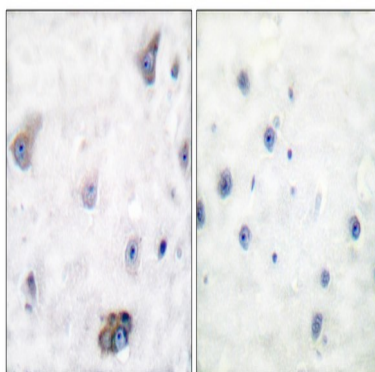
Research Area

Neuroactive ligand-receptor interaction;

Image Data



Enzyme-Linked Immunosorbent Assay (Phospho-ELISA) for Immunogen Phosphopeptide (Phospho-left) and Non-Phosphopeptide (Phospho-right) , using GABA-RB (Phospho-Ser434) Antibody

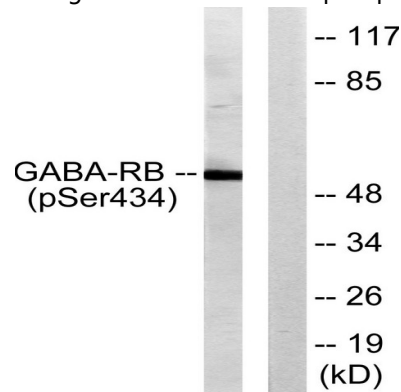


Immunohistochemistry analysis of paraffin-embedded human brain, using GABA-RB (Phospho-Ser434) Antibody. The

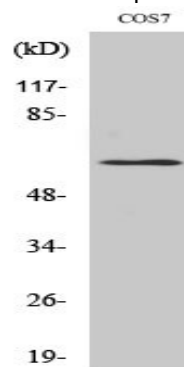
Product Name: GABAA R β 1 (phospho Ser434) Rabbit Polyclonal Antibody
Catalog #: APRab04721



picture on the right is blocked with the phospho peptide.



Western blot analysis of lysates from COS7 cells, using GABA-RB (Phospho-Ser434) Antibody. The lane on the right is blocked with the phospho peptide.



Western Blot analysis of various cells using Phospho-GABAA R β 1 (S434) Polyclonal Antibody

Note

For research use only.