

**Product Name: FADD (phospho Ser191) Rabbit Polyclonal Antibody**  
**Catalog #: APRab04653**

---

## Summary

<b>Production Name</b>	FADD (phospho Ser191) Rabbit Polyclonal Antibody
<b>Description</b>	Rabbit Polyclonal Antibody
<b>Host</b>	Rabbit
<b>Application</b>	IHC,WB,ELISA
<b>Reactivity</b>	Mouse

## Performance

<b>Conjugation</b>	Unconjugated
<b>Modification</b>	Phospho Antibody
<b>Isotype</b>	IgG
<b>Clonality</b>	Polyclonal
<b>Form</b>	Liquid
<b>Storage</b>	Store at 4°C short term. Aliquot and store at -20°C long term. Avoid freeze/thaw cycles.
<b>Buffer</b>	Liquid in PBS containing 50% glycerol, 0.5% BSA and 0.02% New type preservative N.
<b>Purification</b>	Affinity purification

## Immunogen

<b>Gene Name</b>	FADD FADD; MORT1; GIG3; Protein FADD; FAS-associated death domain protein; FAS-associating death domain-containing protein; Growth-inhibiting gene 3 protein; Mediator of receptor induced toxicity
<b>Alternative Names</b>	
<b>Gene ID</b>	14082.0
<b>SwissProt ID</b>	.The antiserum was produced against synthesized peptide derived from mouse FADD around the phosphorylation site of Ser191. AA range:157-206

## Application

<b>Dilution Ratio</b>	WB 1:500 - 1:2000. IHC 1:100 - 1:300. ELISA: 1:5000..
<b>Molecular Weight</b>	25kD

---

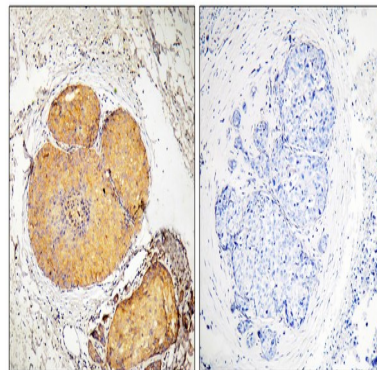
**Product Name: FADD (phospho Ser191) Rabbit Polyclonal Antibody**  
**Catalog #: APRab04653**

## Background

The Fas associated via death domain encoded by FADD is an adaptor molecule that interacts with various cell surface receptors and mediates cell apoptotic signals. Through its C-terminal death domain, this protein can be recruited by TNFRSF6/Fas-receptor, tumor necrosis factor receptor, TNFRSF25, and TNFSF10/TRAIL-receptor, and thus it participates in the death signaling initiated by these receptors. Interaction of this protein with the receptors unmasks the N-terminal effector domain of this protein, which allows it to recruit caspase-8, and thereby activate the cysteine protease cascade. Knockout studies in mice also suggest the importance of this protein in early T cell development.

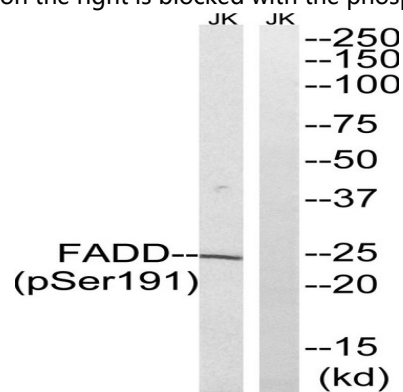
## Research Area

## Image Data



Immunohistochemistry analysis of paraffin-embedded human breast carcinoma, using FADD (Phospho-Ser191) Antibody.

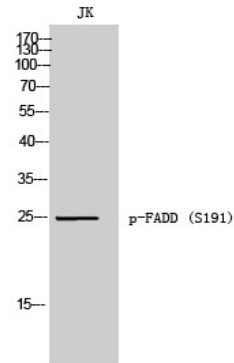
The picture on the right is blocked with the phospho peptide.



Western blot analysis of lysates from Jurkat cells treated with PMA 125ng/ml 30', using FADD (Phospho-Ser191) Antibody. The lane on the right is blocked with the phospho peptide.

**Product Name: FADD (phospho Ser191) Rabbit  
Polyclonal Antibody  
Catalog #: APRab04653**

---



Western Blot analysis of JK cells using Phospho-FADD (S191) Polyclonal Antibody

**Note**

For research use only.