

**Product Name: Ets-1 (phospho Thr38) Rabbit Polyclonal Antibody**  
**Catalog #: APRab04647**

---

## Summary

<b>Production Name</b>	Ets-1 (phospho Thr38) Rabbit Polyclonal Antibody
<b>Description</b>	Rabbit Polyclonal Antibody
<b>Host</b>	Rabbit
<b>Application</b>	WB,IHC,IF,ELISA
<b>Reactivity</b>	Human,Mouse,Rat

## Performance

<b>Conjugation</b>	Unconjugated
<b>Modification</b>	Phospho Antibody
<b>Isotype</b>	IgG
<b>Clonality</b>	Polyclonal
<b>Form</b>	Liquid
<b>Storage</b>	Store at 4°C short term. Aliquot and store at -20°C long term. Avoid freeze/thaw cycles.
<b>Buffer</b>	Liquid in PBS containing 50% glycerol, 0.5% BSA and 0.02% New type preservative N.
<b>Purification</b>	Affinity purification

## Immunogen

<b>Gene Name</b>	ETS1
<b>Alternative Names</b>	ETS1; EWSR2; Protein C-ets-1; p54
<b>Gene ID</b>	2113.0
<b>SwissProt ID</b>	P14921.The antiserum was produced against synthesized peptide derived from human ETS1 around the phosphorylation site of Thr38. AA range:11-60

## Application

<b>Dilution Ratio</b>	WB 1:500 - 1:2000. IHC 1:100 - 1:300. IF 1:200 - 1:1000. ELISA: 1:10000. Not yet tested in other applications.
<b>Molecular Weight</b>	54kD

**Product Name: Ets-1 (phospho Thr38) Rabbit Polyclonal Antibody**  
**Catalog #: APRab04647**



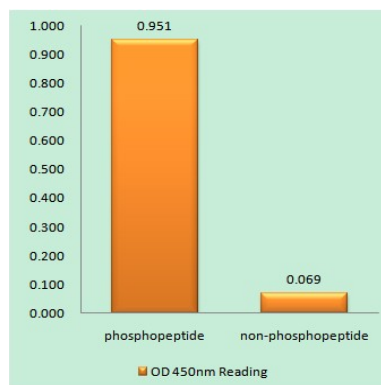
## Background

This gene encodes a member of the ETS family of transcription factors, which are defined by the presence of a conserved ETS DNA-binding domain that recognizes the core consensus DNA sequence GGAA/T in target genes. These proteins function either as transcriptional activators or repressors of numerous genes, and are involved in stem cell development, cell senescence and death, and tumorigenesis. Alternatively spliced transcript variants encoding different isoforms have been described for this gene.[provided by RefSeq, Jul 2011],disease:ETS is responsible for erythroblast and fibroblast transformation. The juxtaposition of the interferon and c-ETS-1 proto-oncogene may be involved in the pathogenesis of human monocytic leukemia.,function:Transcription factor.,PTM:Sumoylated on Lys-15 and Lys-227, preferentially by SUMO2; which inhibits transcriptional activity.,PTM:Ubiquitinated; which induces proteasomal degradation.,similarity:Belongs to the ETS family.,similarity:Contains 1 ETS DNA-binding domain.,similarity:Contains 1 PNT (pointed) domain.,subunit:Interacts with MAF and MAFB (By similarity). Binds to DAXX. Interacts with UBE2L,

## Research Area

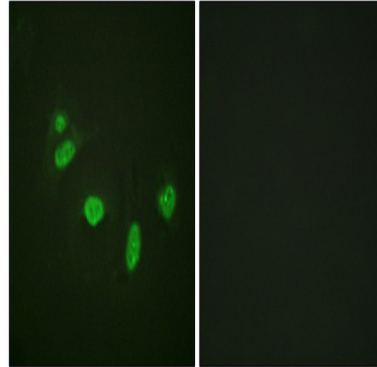
Dorso-ventral axis formation;Pathways in cancer;Renal cell carcinoma;

## Image Data

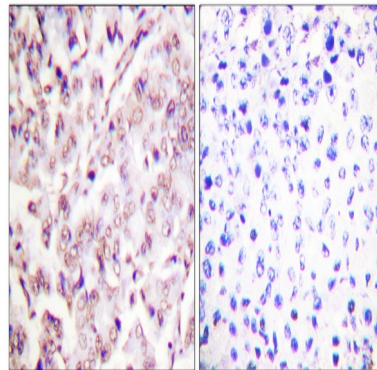


Enzyme-Linked Immunosorbent Assay (Phospho-ELISA) for Immunogen Phosphopeptide (Phospho-left) and Non-Phosphopeptide (Phospho-right) , using ETS1 (Phospho-Thr38) Antibody

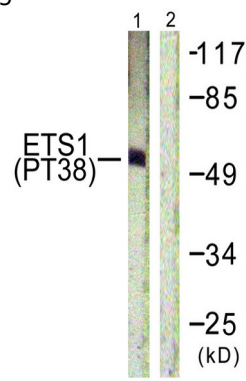
**Product Name: Ets-1 (phospho Thr38) Rabbit Polyclonal Antibody**  
**Catalog #: APRab04647**



Immunofluorescence analysis of HeLa cells, using ETS1 (Phospho-Thr38) Antibody. The picture on the right is blocked with the phospho peptide.

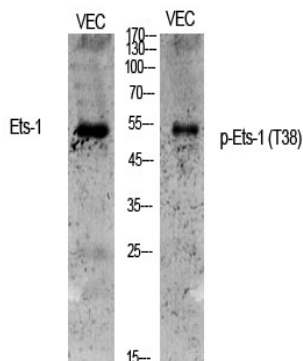


Immunohistochemistry analysis of paraffin-embedded human breast carcinoma, using ETS1 (Phospho-Thr38) Antibody. The picture on the right is blocked with the phospho peptide.

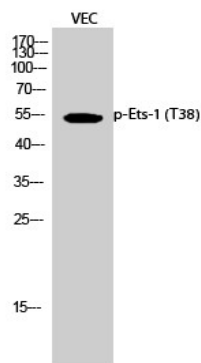


Western blot analysis of lysates from HeLa cells treated with Serum 20% 15', using ETS1 (Phospho-Thr38) Antibody. The lane on the right is blocked with the phospho peptide.

**Product Name: Ets-1 (phospho Thr38) Rabbit Polyclonal Antibody**  
**Catalog #: APRab04647**



Western Blot analysis of various cells using Phospho-Ets-1 (T38) Polyclonal Antibody cells nucleus extracted by Minute TM Cytoplasmic and Nuclear Fractionation kit (SC-003, Inventbiotech, MN, USA) .



Western Blot analysis of VEC cells using Phospho-Ets-1 (T38) Polyclonal Antibody cells nucleus extracted by Minute TM Cytoplasmic and Nuclear Fractionation kit (SC-003, Inventbiotech, MN, USA) .

## Note

For research use only.