

Product Name: ERF (phospho Thr526) Rabbit Polyclonal Antibody
Catalog #: APRab04630

Summary

Production Name	ERF (phospho Thr526) Rabbit Polyclonal Antibody
Description	Rabbit Polyclonal Antibody
Host	Rabbit
Application	ELISA,IF,IHC
Reactivity	Human,Mouse

Performance

Conjugation	Unconjugated
Modification	Phospho Antibody
Isotype	IgG
Clonality	Polyclonal
Form	Liquid
Storage	Store at 4°C short term. Aliquot and store at -20°C long term. Avoid freeze/thaw cycles.
Buffer	Liquid in PBS containing 50% glycerol, 0.5% BSA and 0.02% New type preservative N.
Purification	Affinity purification

Immunogen

Gene Name	ERF
Alternative Names	ERF; ETS domain-containing transcription factor ERF; Ets2 repressor factor; PE-2
Gene ID	2077.0
SwissProt ID	P50548.The antiserum was produced against synthesized peptide derived from human ERF around the phosphorylation site of Thr526. AA range:492-541

Application

Dilution Ratio	IHC 1:100 - 1:300. IF 1:200 - 1:1000. ELISA: 1:20000. Not yet tested in other applications.
Molecular Weight	58kD

Product Name: ERF (phospho Thr526) Rabbit Polyclonal Antibody
Catalog #: APRab04630

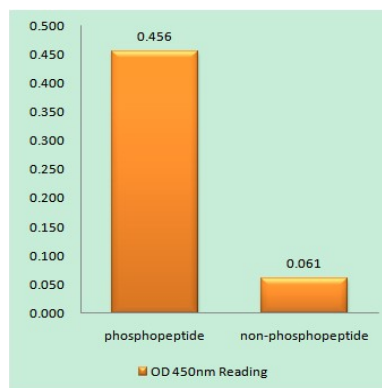


Background

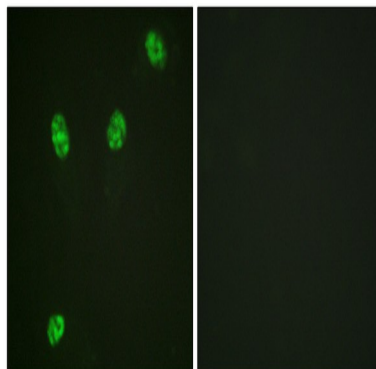
ETS2 is a transcription factor and protooncogene involved in development, apoptosis, and the regulation of telomerase. The protein encoded by this gene binds to the ETS2 promoter and is a strong repressor of ETS2 transcription. Several transcript variants encoding two different isoforms have been found for this gene. [provided by RefSeq, Aug 2015],function:Potent transcriptional repressor that binds to the H1 element of the Ets2 promoter. May regulate other genes involved in cellular proliferation. Required for extraembryonic ectoderm differentiation, ectoplacental cone cavity closure, and chorioallantoic attachment (By similarity). May be important for regulating trophoblast stem cell differentiation.,PTM:Phosphorylated by multiple kinases including probably ERK2. Phosphorylation regulates the activity of ERF.,sequence caution:The sequence differs from that shown because it seems to be derived from a pre-mRNA.,similarity:Belongs to the ETS family.,similarity:Contains 1 ETS DNA-binding domain.,tissue specificity:Highest levels in testis, ovary, pancreas, and heart,.

Research Area

Image Data



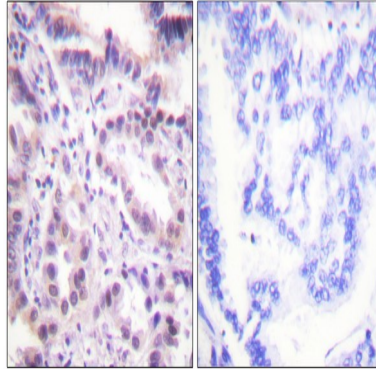
Enzyme-Linked Immunosorbent Assay (Phospho-ELISA) for Immunogen Phosphopeptide (Phospho-left) and Non-Phosphopeptide (Phospho-right), using ERF (Phospho-Thr526) Antibody



Product Name: ERF (phospho Thr526) Rabbit Polyclonal Antibody
Catalog #: APRab04630



Immunofluorescence analysis of HeLa cells, using ERF (Phospho-Thr526) Antibody. The picture on the right is blocked with the phospho peptide.



Immunohistochemistry analysis of paraffin-embedded human lung carcinoma, using ERF (Phospho-Thr526) Antibody. The picture on the right is blocked with the phospho peptide.

Note

For research use only.