

**Product Name: Erbin (phospho Tyr1104) Rabbit Polyclonal Antibody**  
**Catalog #: APRab04629**

---

## Summary

<b>Production Name</b>	Erbin (phospho Tyr1104) Rabbit Polyclonal Antibody
<b>Description</b>	Rabbit Polyclonal Antibody
<b>Host</b>	Rabbit
<b>Application</b>	ELISA,WB,
<b>Reactivity</b>	Human,Rat,Mouse

## Performance

<b>Conjugation</b>	Unconjugated
<b>Modification</b>	Phospho Antibody
<b>Isotype</b>	IgG
<b>Clonality</b>	Polyclonal
<b>Form</b>	Liquid
<b>Storage</b>	Store at 4°C short term. Aliquot and store at -20°C long term. Avoid freeze/thaw cycles.
<b>Buffer</b>	Liquid in PBS containing 50% glycerol, 0.5% BSA and 0.02% New type preservative N.
<b>Purification</b>	Affinity purification

## Immunogen

<b>Gene Name</b>	ERBB2IP
<b>Alternative Names</b>	ERBB2IP; ERBIN; KIAA1225; LAP2; Protein LAP2; Densin-180-like protein; Erbb2-interacting protein; Erbin
<b>Gene ID</b>	55914.0
<b>SwissProt ID</b>	Q96RT1.Synthesized phospho-peptide around the phosphorylation site of human Erbin (phospho Tyr1104)

## Application

<b>Dilution Ratio</b>	WB 1:500 - 1:2000. ELISA: 1:10000. Not yet tested in other applications.
<b>Molecular Weight</b>	172kD

**Product Name: Erbin (phospho Tyr1104) Rabbit Polyclonal Antibody**  
**Catalog #: APRab04629**

---

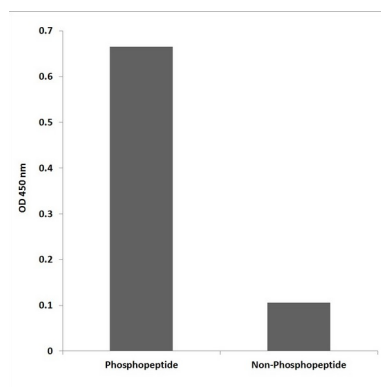
## Background

This gene is a member of the leucine-rich repeat and PDZ domain (LAP) family. The encoded protein contains 17 leucine-rich repeats and one PDZ domain. It binds to the unphosphorylated form of the ERBB2 protein and regulates ERBB2 function and localization. It has also been shown to affect the Ras signaling pathway by disrupting Ras-Raf interaction. Alternatively spliced transcript variants encoding multiple isoforms have been observed for this gene. [provided by RefSeq, Nov 2011],function:Acts as an adapter for the receptor ERBB2, in epithelia. By binding the unphosphorylated 'Tyr-1248' of receptor ERBB2, it may contribute to stabilize this unphosphorylated state.,sequence caution:Contaminating sequence. Potential poly-A sequence.,similarity:Belongs to the LAP (LRR and PDZ) protein family.,similarity:Contains 1 PDZ (DHR) domain.,similarity:Contains 17 LRR (leucine-rich) repeats.,subcellular location:Found in hemidesmosomes, which are cell-substrate adhesion complexes in stratified epithelia. In transfected cells, either diffusely distributed over the cytoplasm or concentrated at the basolateral membrane.,subunit:Interacts with ERBB2, BPAG1 and ITGB4. May favor the localization of ERBB2, by restricting its presence to the basolateral membrane of epithelial cells. Also found to interact with ARVCF and delta catenin.,tissue specificity:Highly expressed in brain, heart, kidney, muscle and stomach, followed by liver, spleen and intestine.,

## Research Area

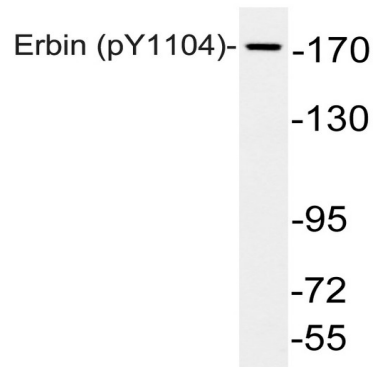
NOD-like receptor;

## Image Data

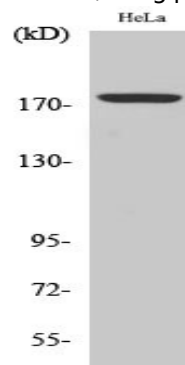


Enzyme-Linked Immunosorbent Assay (Phospho-ELISA) for Immunogen Phosphopeptide (Phospho-left) and Non-Phosphopeptide (Phospho-right) , using Erbin (Phospho-Tyr1104) Antibody

**Product Name: Erbin (phospho Tyr1104) Rabbit Polyclonal Antibody**  
**Catalog #: APRab04629**



Western blot analysis of lysates from HeLa cells, using phospho-Erbin (Phospho-Tyr1104) antibody.



Western Blot analysis of various cells using Phospho-Erbin (Y1104) Polyclonal Antibody

## Note

For research use only.