

Product Name: Eps15 (phospho Tyr849) Rabbit Polyclonal Antibody
Catalog #: APRab04623

Summary

Production Name	Eps15 (phospho Tyr849) Rabbit Polyclonal Antibody
Description	Rabbit Polyclonal Antibody
Host	Rabbit
Application	WB
Reactivity	Human,Mouse,Rat

Performance

Conjugation	Unconjugated
Modification	Phospho Antibody
Isotype	IgG
Clonality	Polyclonal
Form	Liquid
Storage	Store at 4°C short term. Aliquot and store at -20°C long term. Avoid freeze/thaw cycles.
Buffer	Liquid in PBS containing 50% glycerol, 0.5% BSA and 0.02% New type preservative N.
Purification	Affinity purification

Immunogen

Gene Name	EPS15
Alternative Names	EPS15; AF1P; Epidermal growth factor receptor substrate 15; Protein Eps15; Protein AF-1p
Gene ID	2060.0
SwissProt ID	P42566.Synthesized phospho-peptide around the phosphorylation site of human Eps15 (phospho Tyr849)

Application

Dilution Ratio	WB 1:500-1:2000. ELISA: 1:10000.
Molecular Weight	100kD

Product Name: Eps15 (phospho Tyr849) Rabbit Polyclonal Antibody
Catalog #: APRab04623

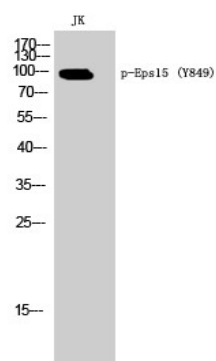
Background

This gene encodes a protein that is part of the EGFR pathway. The protein is present at clathrin-coated pits and is involved in receptor-mediated endocytosis of EGF. Notably, this gene is rearranged with the HRX/ALL/MLL gene in acute myelogenous leukemias. Alternative splicing results in multiple transcript variants encoding distinct isoforms. [provided by RefSeq, May 2009],disease:A chromosomal aberration involving EPS15 is found in acute leukemias. Translocation t(1;11) (p32;q23) with MLL/HRX. The result is a rogue activator protein.,domain:The EH domain interacts with Asn-Pro-Phe (NPF) motifs of target proteins.,function:Involved in cell growth regulation. May be involved in the regulation of mitogenic signals and control of cell proliferation. Involved in the internalization of ligand-inducible receptors of the receptor tyrosine kinase (RTK) type, in particular EGFR. Plays a role in the assembly of clathrin-coated pits.,PTM:Phosphorylation on Tyr-849 is involved in the internalization of EGFR. Not required for membrane translocation after EGF treatment or for targeting to coated pits, but essential for a subsequent step in EGFR endocytosis (By similarity). Phosphorylated on serine upon DNA damage, probably by ATM or ATR.,similarity:Contains 2 EF-hand domains.,similarity:Contains 2 UIM (ubiquitin-interacting motif) repeats.,similarity:Contains 3 EH domains.,subcellular location:Colocalizes with HGS on bilayered clathrin coats on endosomes.,subcellular location:Recruited to the plasma membrane upon EGFR activation and localizes to coated pits.,subunit:Interacts with HGS; the interaction bridges the interaction of STAM or STAM2 with EPS15. Isoform 2 interacts with HGS and AP2A2. Part of a complex at least composed of EPS15, HGS, and either STAM1 or STAM2. Binds AP2A2 and AP2B1. Binds STON2 and EPN1. Interacts (via its SH3-binding sites) with CRK. Interacts with SH3BP4/TTP.,tissue specificity:Ubiquitously expressed.,

Research Area

Endocytosis;

Image Data



Western Blot analysis of JK cells using Phospho-Eps15 (Y849) Polyclonal Antibody

Note

**Product Name: Eps15 (phospho Tyr849) Rabbit
Polyclonal Antibody
Catalog #: APRab04623**



For research use only.