

**Product Name: EphA4 (phospho Tyr596) Rabbit Polyclonal Antibody**  
**Catalog #: APRab04614**

---

## Summary

<b>Production Name</b>	EphA4 (phospho Tyr596) Rabbit Polyclonal Antibody
<b>Description</b>	Rabbit Polyclonal Antibody
<b>Host</b>	Rabbit
<b>Application</b>	WB
<b>Reactivity</b>	Human,Mouse

## Performance

<b>Conjugation</b>	Unconjugated
<b>Modification</b>	Phospho Antibody
<b>Isotype</b>	IgG
<b>Clonality</b>	Polyclonal
<b>Form</b>	Liquid
<b>Storage</b>	Store at 4°C short term. Aliquot and store at -20°C long term. Avoid freeze/thaw cycles.
<b>Buffer</b>	Liquid in PBS containing 50% glycerol, 0.5% BSA and 0.02% New type preservative N.
<b>Purification</b>	Affinity purification

## Immunogen

<b>Gene Name</b>	EPHA4
<b>Alternative Names</b>	EPHA4; HEK8; SEK; TYRO1; Ephrin type-A receptor 4; EPH-like kinase 8; EK8; hEK8; Tyrosine-protein kinase TYRO1; Tyrosine-protein kinase receptor SEK
<b>Gene ID</b>	2043.0
<b>SwissProt ID</b>	P54764.Synthesized phospho-peptide around the phosphorylation site of human EphA4 (phospho Tyr596)

## Application

<b>Dilution Ratio</b>	WB 1:500-1:2000. ELISA: 1:10000.
<b>Molecular Weight</b>	110kD

**Product Name: EphA4 (phospho Tyr596) Rabbit Polyclonal Antibody**  
**Catalog #: APRab04614**

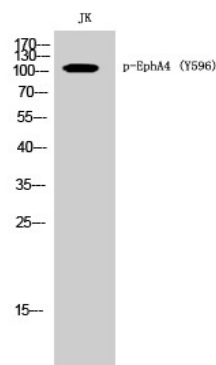
## Background

This gene belongs to the ephrin receptor subfamily of the protein-tyrosine kinase family. EPH and EPH-related receptors have been implicated in mediating developmental events, particularly in the nervous system. Receptors in the EPH subfamily typically have a single kinase domain and an extracellular region containing a Cys-rich domain and 2 fibronectin type III repeats. The ephrin receptors are divided into 2 groups based on the similarity of their extracellular domain sequences and their affinities for binding ephrin-A and ephrin-B ligands. Multiple transcript variants encoding different isoforms have been found for this gene. [provided by RefSeq, Jan 2015],catalytic activity:ATP + a [protein]-L-tyrosine = ADP + a [protein]-L-tyrosine phosphate.,domain:The protein kinase domain mediates interaction with NGEF/ephexin-1.,function:Receptor for members of the ephrin-A family. Binds to ephrin-A1, -A4 and -A5. Binds more poorly to ephrin-A2 and -A3. May play a role in a signal transduction process involved in hindbrain pattern formation.,similarity:Belongs to the protein kinase superfamily. Tyr protein kinase family.,similarity:Belongs to the protein kinase superfamily. Tyr protein kinase family. Ephrin receptor subfamily.,similarity:Contains 1 protein kinase domain.,similarity:Contains 1 SAM (sterile alpha motif) domain.,similarity:Contains 2 fibronectin type-III domains.,subunit:Interacts with the src family kinase, p59-Fyn, through the major phosphorylation site at position Tyr-602. Interacts with NGEF/ephexin-1.,tissue specificity:Ubiquitous.,

## Research Area

Axon guidance;

## Image Data



Western Blot analysis of JK cells using Phospho-EphA4 (Y596) Polyclonal Antibody

## Note

For research use only.