

Product Name: ENaC β (phospho Thr615) Rabbit Polyclonal Antibody
Catalog #: APRab04607

Summary

Production Name	ENaC β (phospho Thr615) Rabbit Polyclonal Antibody
Description	Rabbit Polyclonal Antibody
Host	Rabbit
Application	IF,IHC,WB,
Reactivity	Human,Mouse,Rat

Performance

Conjugation	Unconjugated
Modification	Phospho Antibody
Isotype	IgG
Clonality	Polyclonal
Form	Liquid
Storage	Store at 4°C short term. Aliquot and store at -20°C long term. Avoid freeze/thaw cycles.
Buffer	Liquid in PBS containing 50% glycerol, 0.5% BSA and 0.02% New type preservative N.
Purification	Affinity purification

Immunogen

Gene Name	SCNN1B SCNN1B; Amiloride-sensitive sodium channel subunit beta; Beta-NaCH; Epithelial
Alternative Names	Na(+) channel subunit beta; Beta-ENaC; ENaCB; Nonvoltage-gated sodium channel 1 subunit beta; SCNEB
Gene ID	6338.0 P51168.The antiserum was produced against synthesized peptide derived from human
SwissProt ID	Nonvoltage-gated Sodium Channel 1 around the phosphorylation site of Thr615. AA range:581-630

Application

Dilution Ratio	WB 1:500 - 1:2000 IHC 1:100 - 1:300. IF 1:200 - 1:1000. ELISA: 1:10000. Not yet tested
-----------------------	--

**Product Name: ENaC β (phospho Thr615) Rabbit
Polyclonal Antibody
Catalog #: APRab04607**

in other applications.

Molecular Weight 68kD

Background

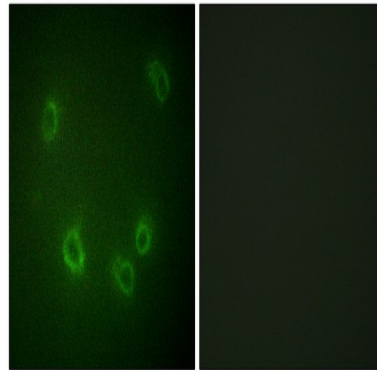
Nonvoltage-gated, amiloride-sensitive, sodium channels control fluid and electrolyte transport across epithelia in many organs. These channels are heteromeric complexes consisting of 3 subunits: alpha, beta, and gamma. This gene encodes the beta subunit, and mutations in this gene have been associated with pseudohypoaldosteronism type 1 (PHA1), and Liddle syndrome. [provided by RefSeq, Apr 2009],disease:Defects in SCNN1B are a cause of autosomal recessive pseudohypoaldosteronism type 1 (PHA1) [MIM:264350]. PHA1 is a rare salt wasting disease resulting from target organ unresponsiveness to mineralocorticoids. There are 2 forms of PHA1: the autosomal recessive form that is severe, and the dominant form which is more milder and due to defects in mineralocorticoid receptor. Autosomal recessive PHA1 is characterized by an often fulminant presentation in the neonatal period with dehydration, hyponatraemia, hyperkalaemia, metabolic acidosis, failure to thrive and weight loss.,disease:Defects in SCNN1B are a cause of Liddle syndrome [MIM:177200]. It is an autosomal dominant disorder characterized by pseudoaldosteronism and hypertension associated with hypokalemic alkalosis. The disease is caused by constitutive activation of the renal epithelial sodium channel.,function:Sodium permeable non-voltage-sensitive ion channel inhibited by the diuretic amiloride. Mediates the electrodiffusion of the luminal sodium (and water, which follows osmotically) through the apical membrane of epithelial cells. Controls the reabsorption of sodium in kidney, colon, lung and sweat glands. Also plays a role in taste perception.,PTM:Phosphorylated on serine and threonine residues.,similarity:Belongs to the amiloride-sensitive sodium channel family.,subcellular location:Apical membrane of epithelial cells.,subunit:Heterotetramer of two alpha, one beta and one gamma subunit. A delta subunit can replace the alpha subunit. Interacts with the WW domains of NEDD4, NEDD4L, WWP1 and WWP2.,

Research Area

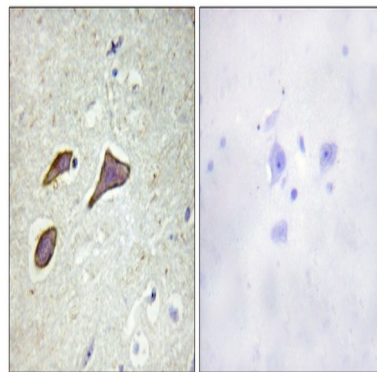
Taste transduction;Aldosterone-regulated sodium reabsorption;

Image Data

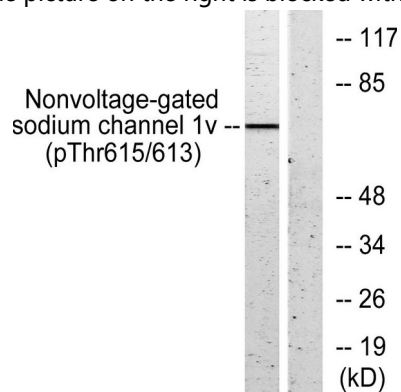
Product Name: ENaC β (phospho Thr615) Rabbit Polyclonal Antibody
Catalog #: APRab04607



Immunofluorescence analysis of COS7 cells, using Nonvoltage-gated Sodium Channel 1 (Phospho-Thr615) Antibody. The picture on the right is blocked with the phospho peptide.

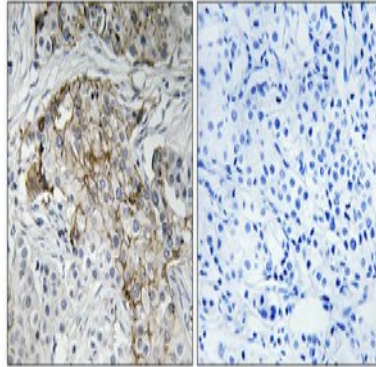


Immunohistochemistry analysis of paraffin-embedded human brain, using Nonvoltage-gated Sodium Channel 1 (Phospho-Thr615) Antibody. The picture on the right is blocked with the phospho peptide.



Western blot analysis of lysates from HeLa cells, using Nonvoltage-gated Sodium Channel 1 (Phospho-Thr615) Antibody. The lane on the right is blocked with the phospho peptide.

**Product Name: ENaC β (phospho Thr615) Rabbit
Polyclonal Antibody
Catalog #: APRab04607**



Immunohistochemical analysis of paraffin-embedded Human breast cancer. Antibody was diluted at 1:100 (4^o,overnight) . High-pressure and temperature Tris-EDTA,pH8.0 was used for antigen retrieval. Negative contrl (right) obtaned from antibody was pre-absorbed by immunogen peptide.

Note

For research use only.