

Product Name: DOR-1 (phospho Ser363) Rabbit Polyclonal Antibody
Catalog #: APRab04560

Summary

| | |
|------------------------|---|
| Production Name | DOR-1 (phospho Ser363) Rabbit Polyclonal Antibody |
| Description | Rabbit Polyclonal Antibody |
| Host | Rabbit |
| Application | ELISA,IHC,WB, |
| Reactivity | Human,Mouse,Rat |

Performance

| | |
|---------------------|--|
| Conjugation | Unconjugated |
| Modification | Phospho Antibody |
| Isotype | IgG |
| Clonality | Polyclonal |
| Form | Liquid |
| Storage | Store at 4°C short term. Aliquot and store at -20°C long term. Avoid freeze/thaw cycles. |
| Buffer | Liquid in PBS containing 50% glycerol, 0.5% BSA and 0.02% New type preservative N. |
| Purification | Affinity purification |

Immunogen

| | |
|--------------------------|--|
| Gene Name | OPRD1 |
| Alternative Names | OPRD1; OPRD; Delta-type opioid receptor; D-OR-1; DOR-1 |
| Gene ID | 4985.0 |
| SwissProt ID | P41143.The antiserum was produced against synthesized peptide derived from human Opioid Receptor-delta around the phosphorylation site of Ser363. AA range:323-372 |

Application

| | |
|-------------------------|---|
| Dilution Ratio | WB 1:500 - 1:2000. IHC 1:100 - 1:300. ELISA: 1:5000.. |
| Molecular Weight | 36kD |

Product Name: DOR-1 (phospho Ser363) Rabbit Polyclonal Antibody
Catalog #: APRab04560

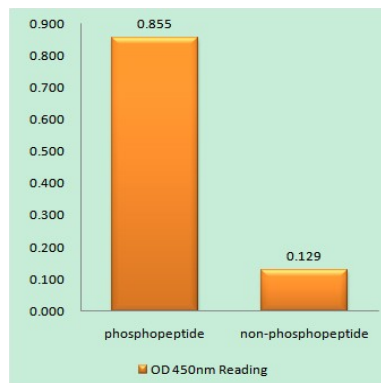
Background

function: Inhibits neurotransmitter release by reducing calcium ion currents and increasing potassium ion conductance. Highly stereoselective. receptor for enkephalins., online information: Delta opioid receptor entry, similarity: Belongs to the G-protein coupled receptor 1 family., subunit: Interacts with GPRASP1., function: Inhibits neurotransmitter release by reducing calcium ion currents and increasing potassium ion conductance. Highly stereoselective. receptor for enkephalins., online information: Delta opioid receptor entry, similarity: Belongs to the G-protein coupled receptor 1 family., subunit: Interacts with GPRASP1.,

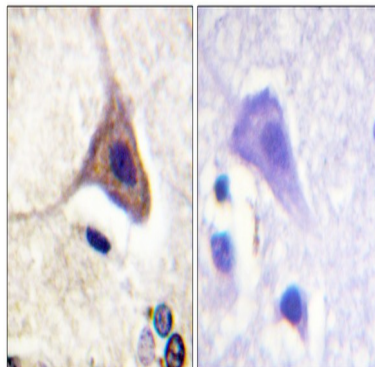
Research Area

Neuroactive ligand-receptor interaction;

Image Data

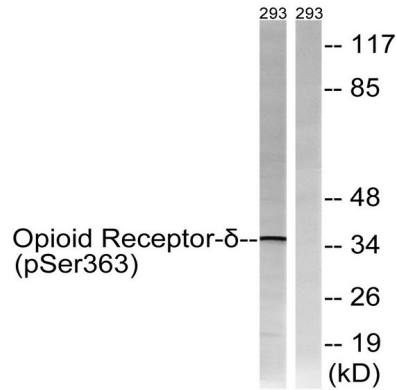


Enzyme-Linked Immunosorbent Assay (Phospho-ELISA) for Immunogen Phosphopeptide (Phospho-left) and Non-Phosphopeptide (Phospho-right), using Opioid Receptor-delta (Phospho-Ser363) Antibody

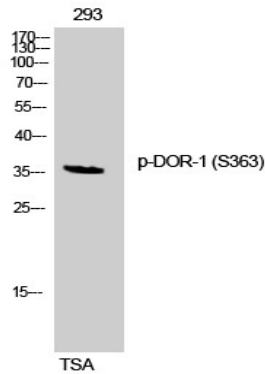


Immunohistochemistry analysis of paraffin-embedded human brain, using Opioid Receptor-delta (Phospho-Ser363) Antibody. The picture on the right is blocked with the phospho peptide.

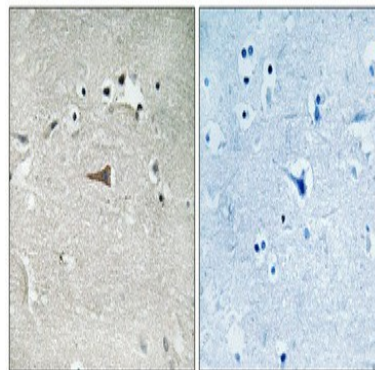
Product Name: DOR-1 (phospho Ser363) Rabbit Polyclonal Antibody
Catalog #: APRab04560



Western blot analysis of lysates from 293 cells treated with TSA 400nM 24h, using Opioid Receptor-delta (Phospho-Ser363) Antibody. The lane on the right is blocked with the phospho peptide.



Western Blot analysis of 293 cells using Phospho-DOR-1 (S363) Polyclonal Antibody



Immunohistochemical analysis of paraffin-embedded Human brain. Antibody was diluted at 1:100 (4°,overnight) . High-pressure and temperature Tris-EDTA,pH8.0 was used for antigen retrieval. Negative contrl (right) obtaned from antibody was pre-absorbed by immunogen peptide.

Note

For research use only.