

Product Name: DARPP-32 (phospho Thr34) Rabbit Polyclonal Antibody
Catalog #: APRab04538

Summary

Production Name	DARPP-32 (phospho Thr34) Rabbit Polyclonal Antibody
Description	Rabbit Polyclonal Antibody
Host	Rabbit
Application	WB,IHC,IF,ELISA
Reactivity	Human,Mouse,Rat

Performance

Conjugation	Unconjugated
Modification	Phospho Antibody
Isotype	IgG
Clonality	Polyclonal
Form	Liquid
Storage	Store at 4°C short term. Aliquot and store at -20°C long term. Avoid freeze/thaw cycles.
Buffer	Liquid in PBS containing 50% glycerol, 0.5% BSA and 0.02% New type preservative N.
Purification	Affinity purification

Immunogen

Gene Name	PPP1R1B
Alternative Names	PPP1R1B; DARPP32; Protein phosphatase 1 regulatory subunit 1B; DARPP-32; Dopamine- and cAMP-regulated neuronal phosphoprotein
Gene ID	84152.0
SwissProt ID	Q9UD71.The antiserum was produced against synthesized peptide derived from human DARPP-32 around the phosphorylation site of Thr34. AA range:18-67

Application

Dilution Ratio	WB 1:500 - 1:2000. IHC 1:100 - 1:300. IF 1:200 - 1:1000. ELISA: 1:10000. Not yet tested in other applications.
-----------------------	--

Product Name: DARPP-32 (phospho Thr34) Rabbit Polyclonal Antibody
Catalog #: APRab04538

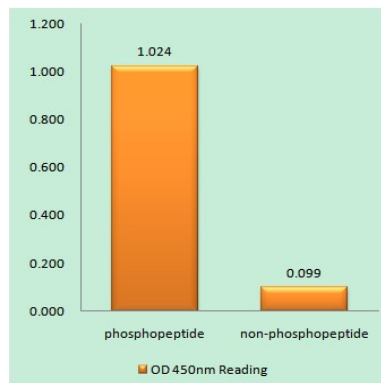
Molecular Weight 35kD

Background

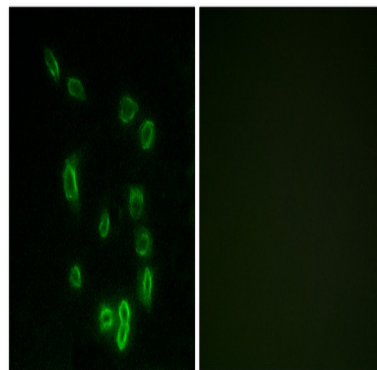
This gene encodes a bifunctional signal transduction molecule. Dopaminergic and glutamatergic receptor stimulation regulates its phosphorylation and function as a kinase or phosphatase inhibitor. As a target for dopamine, this gene may serve as a therapeutic target for neurologic and psychiatric disorders. Multiple transcript variants encoding different isoforms have been found for this gene. [provided by RefSeq, Oct 2011],function:Inhibitor of protein-phosphatase 1.,PTM:Dopamine- and cyclic AMP-regulated neuronal phosphoprotein.,PTM:Phosphorylation of Thr-34 is required for activity.,similarity:Belongs to the protein phosphatase inhibitor 1 family.,

Research Area

Image Data

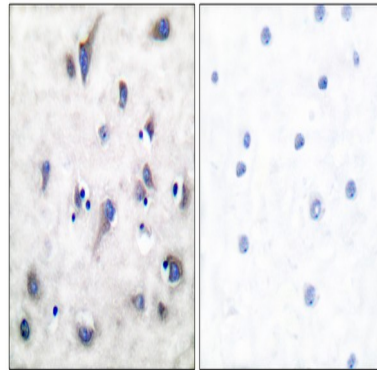


Enzyme-Linked Immunosorbent Assay (Phospho-ELISA) for Immunogen Phosphopeptide (Phospho-left) and Non-Phosphopeptide (Phospho-right) , using DARPP-32 (Phospho-Thr34) Antibody

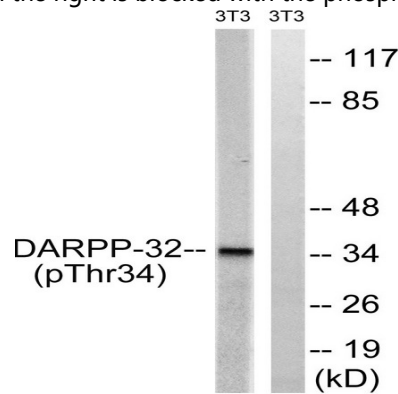


Immunofluorescence analysis of HepG2 cells, using DARPP-32 (Phospho-Thr34) Antibody. The picture on the right is blocked with the phospho peptide.

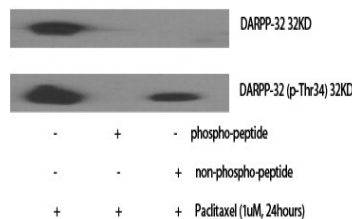
Product Name: DARPP-32 (phospho Thr34) Rabbit Polyclonal Antibody
Catalog #: APRab04538



Immunohistochemistry analysis of paraffin-embedded human brain, using DARPP-32 (Phospho-Thr34) Antibody. The picture on the right is blocked with the phospho peptide.

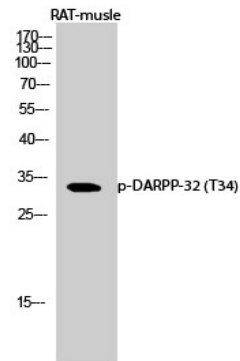


Western blot analysis of lysates from NIH/3T3 cells treated with PMA 125ng/ml 30', using DARPP-32 (Phospho-Thr34) Antibody. The lane on the right is blocked with the phospho peptide.



Western Blot analysis of various cells using Phospho-DARPP-32 (T34) Polyclonal Antibody diluted at 1: 1000

**Product Name: DARPP-32 (phospho Thr34) Rabbit
Polyclonal Antibody
Catalog #: APRab04538**



Western Blot analysis of RAT-muscle cells using Phospho-DARPP-32 (T34) Polyclonal Antibody diluted at 1: 1000

Note

For research use only.