

**Product Name: Cytokeratin 18 (phospho Ser33) Rabbit Polyclonal Antibody**  
**Catalog #: APRab04530**



---

## Summary

<b>Production Name</b>	Cytokeratin 18 (phospho Ser33) Rabbit Polyclonal Antibody
<b>Description</b>	Rabbit Polyclonal Antibody
<b>Host</b>	Rabbit
<b>Application</b>	WB,IHC,IF,ELISA
<b>Reactivity</b>	Human,Mouse,Rat

## Performance

<b>Conjugation</b>	Unconjugated
<b>Modification</b>	Phospho Antibody
<b>Isotype</b>	IgG
<b>Clonality</b>	Polyclonal
<b>Form</b>	Liquid
<b>Storage</b>	Store at 4°C short term. Aliquot and store at -20°C long term. Avoid freeze/thaw cycles.
<b>Buffer</b>	Liquid in PBS containing 50% glycerol, 0.5% BSA and 0.02% New type preservative N.
<b>Purification</b>	Affinity purification

## Immunogen

<b>Gene Name</b>	KRT18
<b>Alternative Names</b>	KRT18; CYK18; PIG46; Keratin; type I cytoskeletal 18; Cell proliferation-inducing gene 46 protein; Cytokeratin-18; CK-18; Keratin-18; K18
<b>Gene ID</b>	3875.0
<b>SwissProt ID</b>	P05783.The antiserum was produced against synthesized peptide derived from human Keratin 18 around the phosphorylation site of Ser33. AA range:1-50

## Application

<b>Dilution Ratio</b>	WB 1:500 - 1:2000. IHC 1:100 - 1:300. IF 1:200 - 1:1000. ELISA: 1:5000. Not yet tested in other applications.
-----------------------	---

**Product Name: Cytokeratin 18 (phospho Ser33) Rabbit Polyclonal Antibody**  
**Catalog #: APRab04530**



**Molecular Weight** 47kD

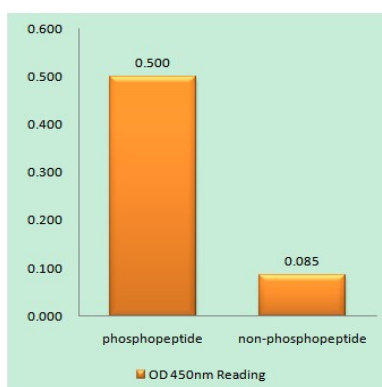
## Background

KRT18 encodes the type I intermediate filament chain keratin 18. Keratin 18, together with its filament partner keratin 8, are perhaps the most commonly found members of the intermediate filament gene family. They are expressed in single layer epithelial tissues of the body. Mutations in this gene have been linked to cryptogenic cirrhosis. Two transcript variants encoding the same protein have been found for this gene. [provided by RefSeq, Jul 2008],disease:Defects in KRT18 are a cause of cryptogenic cirrhosis [MIM:215600],function:Involved in the uptake of thrombin-antithrombin complexes by hepatic cells (By similarity). When phosphorylated, plays a role in filament reorganization. Involved in the delivery of mutated CFTR to the plasma membrane. Together with KRT8, is involved in interleukin-6 (IL-6)-mediated barrier protection.,induction:By IL-6.,miscellaneous:There are two types of cytoskeletal and microfibrillar keratin: I (acidic; 40-55 kDa) and II (neutral to basic; 56-70 kDa),PTM:O-glycosylated at multiple sites; glycans consist of single N-acetylglucosamine residues.,PTM:Phosphorylation at Ser-34 increases during mitosis. Hyperphosphorylated at Ser-53 in diseased cirrhosis liver. Phosphorylation increases by IL-6.,PTM:Proteolytically cleaved by caspases during epithelial cell apoptosis. Cleavage occurs at Asp-238 by either caspase-3, caspase-6 or caspase-7.,similarity:Belongs to the intermediate filament family.,subunit:Heterotetramer of two type I and two type II keratins. Keratin-18 associates with keratin-8. Interacts with the thrombin-antithrombin complex (By similarity). Interacts with PNN, HCV core protein and mutated CFTR. Interacts with YWHAЕ, YWHAH and YWHAZ only when phosphorylated. Interacts with DNAJB6, TCHP and TRADD.,tissue specificity:Expressed in colon, placenta, liver and very weakly in exocervix. Increased expression observed in lymph nodes of breast carcinoma.,

## Research Area

Pathogenic Escherichia coli infection;

## Image Data

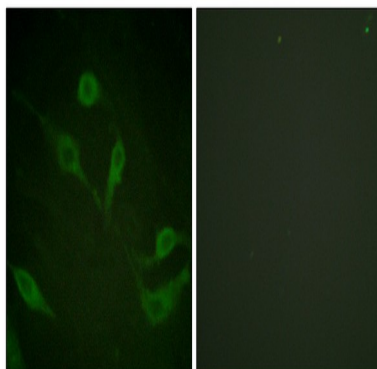


Enzyme-Linked Immunosorbent Assay (Phospho-ELISA) for Immunogen Phosphopeptide (Phospho-left) and Non-

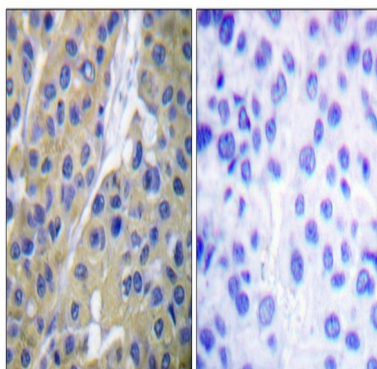
**Product Name: Cytokeratin 18 (phospho Ser33) Rabbit Polyclonal Antibody**  
**Catalog #: APRab04530**



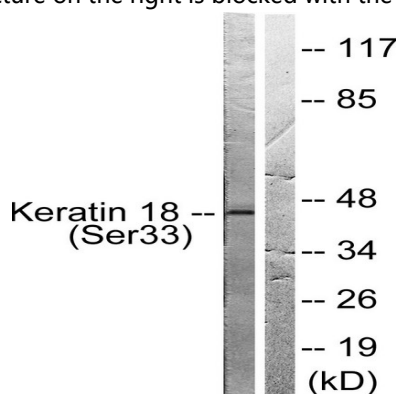
Phosphopeptide (Phospho-right) , using Keratin 18 (Phospho-Ser33) Antibody



Immunofluorescence analysis of HeLa cells, using Keratin 18 (Phospho-Ser33) Antibody. The picture on the right is blocked with the phospho peptide.

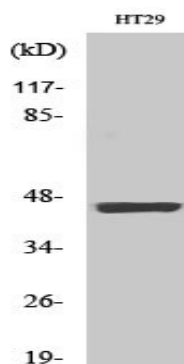


Immunohistochemistry analysis of paraffin-embedded human breast carcinoma, using Keratin 18 (Phospho-Ser33) Antibody. The picture on the right is blocked with the phospho peptide.

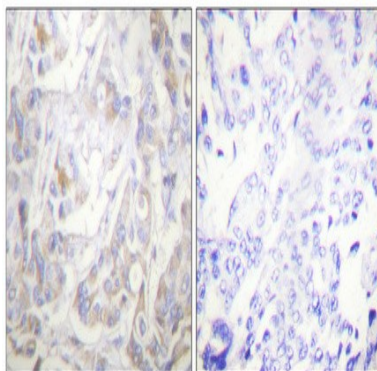


Western blot analysis of lysates from HT29 cells, using Keratin 18 (Phospho-Ser33) Antibody. The lane on the right is blocked with the phospho peptide.

**Product Name: Cytokeratin 18 (phospho Ser33) Rabbit Polyclonal Antibody**  
**Catalog #: APRab04530**



Western Blot analysis of various cells using Phospho-Cytokeratin 18 (S33) Polyclonal Antibody diluted at 1: 2000



Immunohistochemical analysis of paraffin-embedded Human breast cancer. Antibody was diluted at 1:100 (4°, overnight) . High-pressure and temperature Tris-EDTA, pH 8.0 was used for antigen retrieval. Negative control (right) obtained from antibody was pre-absorbed by immunogen peptide.

## Note

For research use only.