

Product Name: CRMP-2 (phospho Thr509) Rabbit Polyclonal Antibody
Catalog #: APRab04503

Summary

Production Name	CRMP-2 (phospho Thr509) Rabbit Polyclonal Antibody
Description	Rabbit Polyclonal Antibody
Host	Rabbit
Application	IHC,WB,
Reactivity	Human,Mouse,Rat

Performance

Conjugation	Unconjugated
Modification	Phospho Antibody
Isotype	IgG
Clonality	Polyclonal
Form	Liquid
Storage	Store at 4°C short term. Aliquot and store at -20°C long term. Avoid freeze/thaw cycles.
Buffer	Liquid in PBS containing 50% glycerol, 0.5% BSA and 0.02% New type preservative N.
Purification	Affinity purification

Immunogen

Gene Name	DPYSL2
Alternative Names	DPYSL2; CRMP2; ULIP2; Dihydropyrimidinase-related protein 2; DRP-2; Collapsin response mediator protein 2; CRMP-2; N2A3; Unc-33-like phosphoprotein 2; ULIP-2
Gene ID	1808.0
SwissProt ID	Q16555.The antiserum was produced against synthesized peptide derived from human CRMP-2 around the phosphorylation site of Thr509. AA range:475-524

Application

Dilution Ratio	WB 1:500 - 1:2000. IHC 1:100 - 1:300. ELISA: 1:5000..
Molecular Weight	50kD

Product Name: CRMP-2 (phospho Thr509) Rabbit Polyclonal Antibody
Catalog #: APRab04503



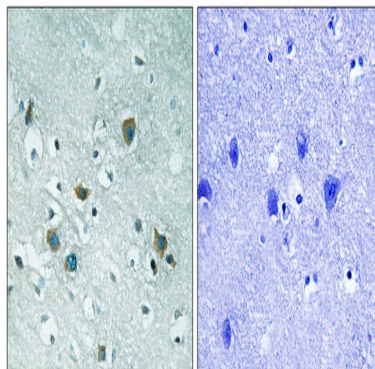
Background

This gene encodes a member of the collapsin response mediator protein family. Collapsin response mediator proteins form homo- and hetero-tetramers and facilitate neuron guidance, growth and polarity. The encoded protein promotes microtubule assembly and is required for Sema3A-mediated growth cone collapse, and also plays a role in synaptic signaling through interactions with calcium channels. This gene has been implicated in multiple neurological disorders, and hyperphosphorylation of the encoded protein may play a key role in the development of Alzheimer's disease. Alternatively spliced transcript variants encoding multiple isoforms have been observed for this gene. [provided by RefSeq, Sep 2011],function:Necessary for signaling by class 3 semaphorins and subsequent remodeling of the cytoskeleton. Plays a role in axon guidance, neuronal growth cone collapse and cell migration.,PTM:3F4, a monoclonal antibody which strongly stains neurofibrillary tangles in Alzheimer disease brains, specifically labels DPYSL2 when phosphorylated on Ser-518, Ser-522 and Thr-509.,similarity:Belongs to the DHOase family. Hydantoinase/dihydropyrimidinase subfamily.,subunit:Homotetramer, and heterotetramer with CRMP1, DPYSL3, DPYSL4 or DPYSL5 (By similarity). Interacts through its C-terminus with the C-terminus of CYFIP1/SRA1. Interacts with HTR4.,tissue specificity:Ubiquitous.,

Research Area

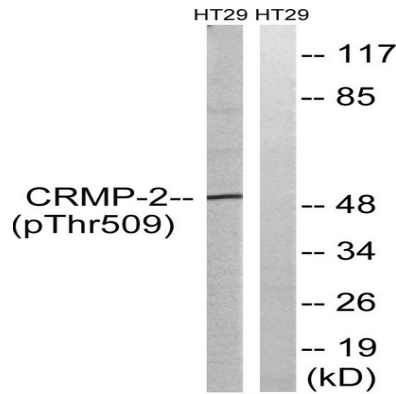
Axon guidance;

Image Data

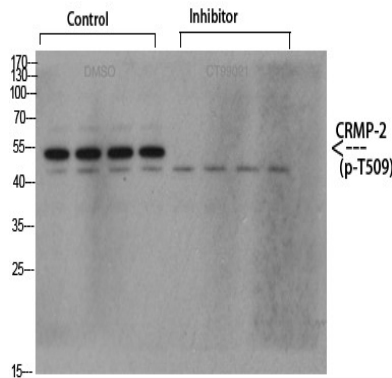


Immunohistochemistry analysis of paraffin-embedded human brain, using CRMP-2 (Phospho-Thr509) Antibody. The picture on the right is blocked with the phospho peptide.

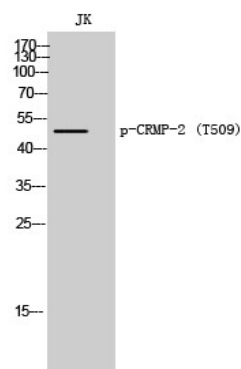
Product Name: CRMP-2 (phospho Thr509) Rabbit Polyclonal Antibody
Catalog #: APRab04503



Western blot analysis of lysates from HT29 cells treated with heat shock, using CRMP-2 (Phospho-Thr509) Antibody. The lane on the right is blocked with the phospho peptide.



Western Blot analysis of various cells using primary antibody diluted at 1:1000 (4°C overnight) . Secondary antibody: Goat Anti-rabbit IgG IRDye 800 (diluted at 1:5000, 25°C, 1 hour) . Cell lysate was extracted by Minute™ Plasma Membrane Protein Isolation and Cell Fractionation Kit (SM-005, Inventbiotech,MN,USA) .



Western Blot analysis of JK cells using Phospho-CRMP-2 (T509) Polyclonal Antibody

Note

For research use only.