

Product Name: Cortactin (phospho Tyr421) Rabbit Polyclonal Antibody
Catalog #: APRab04488

Summary

Production Name	Cortactin (phospho Tyr421) Rabbit Polyclonal Antibody
Description	Rabbit Polyclonal Antibody
Host	Rabbit
Application	ELISA,WB,
Reactivity	Human,Mouse,Rat

Performance

Conjugation	Unconjugated
Modification	Phospho Antibody
Isotype	IgG
Clonality	Polyclonal
Form	Liquid
Storage	Store at 4°C short term. Aliquot and store at -20°C long term. Avoid freeze/thaw cycles.
Buffer	Liquid in PBS containing 50% glycerol, 0.5% BSA and 0.02% New type preservative N.
Purification	Affinity purification

Immunogen

Gene Name	CTTN
Alternative Names	CTTN; EMS1; Src substrate cortactin; Amplaxin; Oncogene EMS1
Gene ID	2017.0
SwissProt ID	Q14247.The antiserum was produced against synthesized peptide derived from human Cortactin around the phosphorylation site of Tyr421. AA range:388-437

Application

Dilution Ratio	WB 1:500 - 1:2000. ELISA: 1:20000..
Molecular Weight	80kD

Product Name: Cortactin (phospho Tyr421) Rabbit Polyclonal Antibody
Catalog #: APRab04488

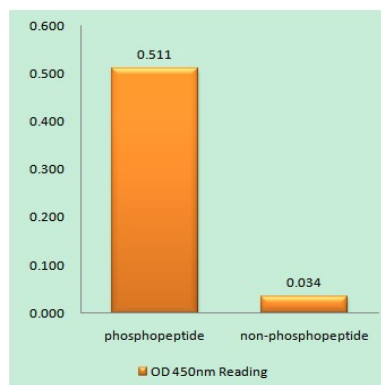
Background

cortactin(CTTN) Homo sapiens This gene is overexpressed in breast cancer and squamous cell carcinomas of the head and neck. The encoded protein is localized in the cytoplasm and in areas of the cell-substratum contacts. This gene has two roles: (1) regulating the interactions between components of adherens-type junctions and (2) organizing the cytoskeleton and cell adhesion structures of epithelia and carcinoma cells. During apoptosis, the encoded protein is degraded in a caspase-dependent manner. The aberrant regulation of this gene contributes to tumor cell invasion and metastasis. Three splice variants that encode different isoforms have been identified for this gene. [provided by RefSeq, May 2010],function:May contribute to the organization of cell structure. The SH3 motif may function as a binding region to cytoskeleton. Tyrosine phosphorylation in transformed cells may contribute to cellular growth regulation and transformation.,online information:Cortactin entry,similarity:Contains 1 SH3 domain.,similarity:Contains 7 cortactin repeats.,subcellular location:Associated with membrane ruffles and lamellipodia.,subunit:Interacts with SHANK2 and SHANK3 via its SH2 domain. Also interacts with FGD1 (By similarity). Interacts with PLXDC2.,

Research Area

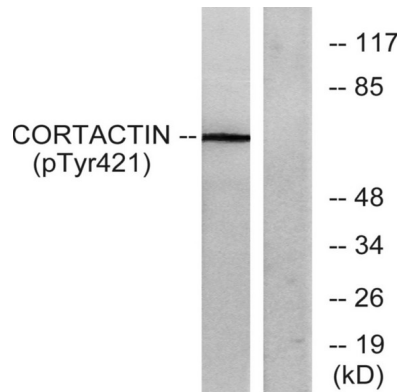
Tight junction;Pathogenic Escherichia coli infection;

Image Data

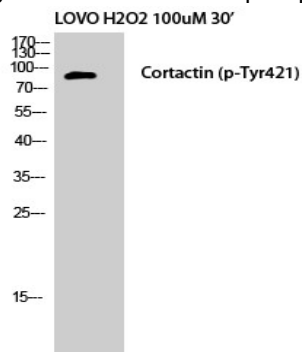


Enzyme-Linked Immunosorbent Assay (Phospho-ELISA) for Immunogen Phosphopeptide (Phospho-left) and Non-Phosphopeptide (Phospho-right) , using Cortactin (Phospho-Tyr421) Antibody

Product Name: Cortactin (phospho Tyr421) Rabbit Polyclonal Antibody
Catalog #: APRab04488



Western blot analysis of lysates from HeLa cells treated with H₂O₂, using Cortactin (Phospho-Tyr421) Antibody. The lane on the right is blocked with the phospho peptide.



Western Blot analysis of LOVO+H₂O₂ cells using Phospho-Cortactin (Y421) Polyclonal Antibody

Note

For research use only.