

Product Name: Cofilin (phospho Ser3) Rabbit Polyclonal Antibody
Catalog #: APRab04483

Summary

Production Name	Cofilin (phospho Ser3) Rabbit Polyclonal Antibody
Description	Rabbit Polyclonal Antibody
Host	Rabbit
Application	WB,IHC,ELISA
Reactivity	Human,Mouse,Rat

Performance

Conjugation	Unconjugated
Modification	Phospho Antibody
Isotype	IgG
Clonality	Polyclonal
Form	Liquid
Storage	Store at 4°C short term. Aliquot and store at -20°C long term. Avoid freeze/thaw cycles.
Buffer	Liquid in PBS containing 50% glycerol, 0.5% BSA and 0.02% New type preservative N.
Purification	Affinity purification

Immunogen

Gene Name	CFL1
Alternative Names	CFL1; CFL; Cofilin-1; 18 kDa phosphoprotein; p18; Cofilin; non-muscle isoform
Gene ID	3716.0
SwissProt ID	P23528.The antiserum was produced against synthesized peptide derived from human Cofilin around the phosphorylation site of Ser3. AA range:1-50

Application

Dilution Ratio	WB 1:500 - 1:2000. IHC 1:100 - 1:300. ELISA: 1:10000..
Molecular Weight	19kD

Product Name: Cofilin (phospho Ser3) Rabbit Polyclonal Antibody
Catalog #: APRab04483

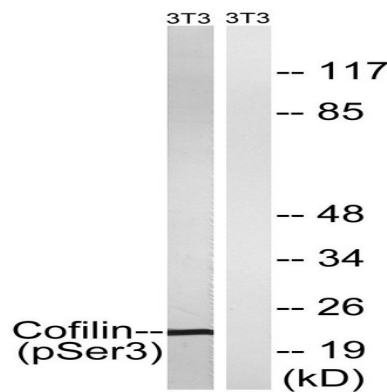
Background

cofilin 1(CFL1) Homo sapiens The protein encoded by this gene can polymerize and depolymerize F-actin and G-actin in a pH-dependent manner. Increased phosphorylation of this protein by LIM kinase aids in Rho-induced reorganization of the actin cytoskeleton. Cofilin is a widely distributed intracellular actin-modulating protein that binds and depolymerizes filamentous F-actin and inhibits the polymerization of monomeric G-actin in a pH-dependent manner. It is involved in the translocation of actin-cofilin complex from cytoplasm to nucleus.[supplied by OMIM, Apr 2004],function:Controls reversibly actin polymerization and depolymerization in a pH-sensitive manner. It has the ability to bind G- and F-actin in a 1:1 ratio of cofilin to actin. It is the major component of intranuclear and cytoplasmic actin rods.,online information:Cofilin entry,PTM:Phosphorylated on Ser-3 in resting cells.,similarity:Belongs to the actin-binding proteins ADF family.,similarity:Contains 1 ADF-H domain.,subcellular location:Almost completely in nucleus in cells exposed to heat shock or 10% dimethyl sulfoxide.,tissue specificity:Widely distributed in various tissues.,

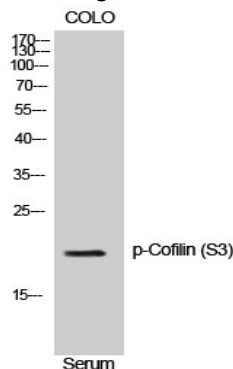
Research Area

Axon guidance;Fc gamma R-mediated phagocytosis;Regulates Actin and Cytoskeleton;

Image Data



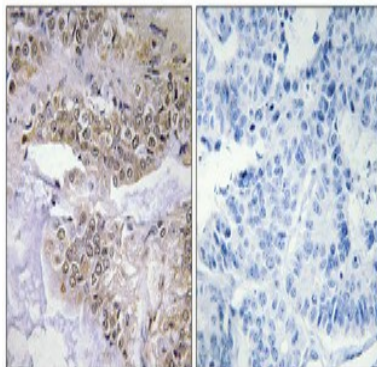
Western blot analysis of lysates from NIH/3T3 cells treated with paclitaxel 1uM 24hours, using Cofilin (Phospho-Ser3) Antibody. The lane on the right is blocked with the phospho peptide.



Product Name: Cofilin (phospho Ser3) Rabbit Polyclonal Antibody
Catalog #: APRab04483



Western Blot analysis of NIH-3T3 cells using Phospho-Cofilin (S3) Polyclonal Antibody



Immunohistochemical analysis of paraffin-embedded Human lung cancer. Antibody was diluted at 1:100 (4°,overnight) . High-pressure and temperature Tris-EDTA,pH8.0 was used for antigen retrieval. Negetive contrl (right) obtaned from antibody was pre-absorbed by immunogen peptide.

Note

For research use only.