

Product Name: CNOT2 (phospho Ser101) Rabbit Polyclonal Antibody
Catalog #: APRab04482

Summary

Production Name	CNOT2 (phospho Ser101) Rabbit Polyclonal Antibody
Description	Rabbit Polyclonal Antibody
Host	Rabbit
Application	IHC,ELISA
Reactivity	Human,Mouse,Rat

Performance

Conjugation	Unconjugated
Modification	Phospho Antibody
Isotype	IgG
Clonality	Polyclonal
Form	Liquid
Storage	Store at 4°C short term. Aliquot and store at -20°C long term. Avoid freeze/thaw cycles.
Buffer	Liquid in PBS containing 50% glycerol, 0.5% BSA and 0.02% New type preservative N.
Purification	Affinity purification

Immunogen

Gene Name	CNOT2
Alternative Names	CNOT2; CDC36; NOT2; HSPC131; MSTP046; CCR4-NOT transcription complex subunit 2; CCR4-associated factor 2
Gene ID	4848.0
SwissProt ID	Q9NZN8.The antiserum was produced against synthesized peptide derived from human CNOT2 around the phosphorylation site of Ser101. AA range:67-116

Application

Dilution Ratio	IHC 1:100 - 1:300. ELISA: 1:10000..
Molecular Weight	

Product Name: CNOT2 (phospho Ser101) Rabbit Polyclonal Antibody
Catalog #: APRab04482

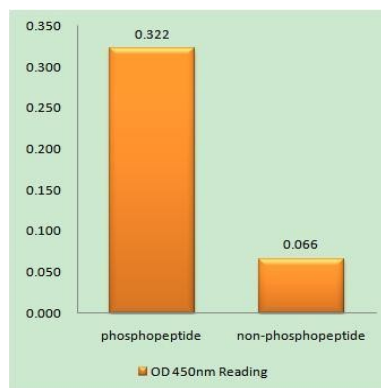
Background

CCR4-NOT transcription complex subunit 2(CNOT2) Homo sapiens This gene encodes a subunit of the multi-component CCR4-NOT complex. The CCR4-NOT complex regulates mRNA synthesis and degradation and is also thought to be involved in mRNA splicing, transport and localization. The encoded protein interacts with histone deacetylases and functions as a repressor of polymerase II transcription. Alternatively spliced transcript variants have been observed for this gene. [provided by RefSeq, Dec 2010],function:The CCR4-NOT complex functions as general transcription regulation complex.,PTM:Phosphorylated upon DNA damage, probably by ATM or ATR.,similarity:Belongs to the CNOT2/3/5 family.,subunit:Subunit of the CCR4-NOT core complex that contains CHAF1A, CHAF1B, CNOT1, CNOT2, CNOT3, CNOT4, CNOT6 and CNOT8.,tissue specificity:Ubiquitous. Highly expressed in brain, heart, thymus, spleen, kidney, liver, small intestine, placenta, lung and peripheral blood leukocytes.,

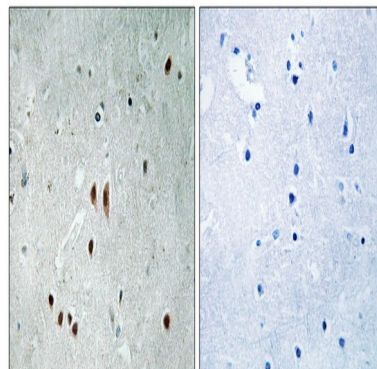
Research Area

RNA degradation;

Image Data



Enzyme-Linked Immunosorbent Assay (Phospho-ELISA) for Immunogen Phosphopeptide (Phospho-left) and Non-Phosphopeptide (Phospho-right) , using CNOT2 (Phospho-Ser101) Antibody





**Product Name: CNOT2 (phospho Ser101) Rabbit
Polyclonal Antibody
Catalog #: APRab04482**

Immunohistochemistry analysis of paraffin-embedded human brain, using CNOT2 (Phospho-Ser101) Antibody. The picture on the right is blocked with the phospho peptide.

Note

For research use only.