

Product Name: Claudin-5 (phospho Tyr217) Rabbit Polyclonal Antibody
Catalog #: APRab04473

Summary

Production Name	Claudin-5 (phospho Tyr217) Rabbit Polyclonal Antibody
Description	Rabbit Polyclonal Antibody
Host	Rabbit
Application	IHC,ELISA
Reactivity	Human,Mouse,Rat

Performance

Conjugation	Unconjugated
Modification	Phospho Antibody
Isotype	IgG
Clonality	Polyclonal
Form	Liquid
Storage	Store at 4°C short term. Aliquot and store at -20°C long term. Avoid freeze/thaw cycles.
Buffer	Liquid in PBS containing 50% glycerol, 0.5% BSA and 0.02% New type preservative N.
Purification	Affinity purification

Immunogen

Gene Name	CLDN5
Alternative Names	CLDN5; AWAL; TMVCF; Claudin-5; Transmembrane protein deleted in VCFS; TMDVCF
Gene ID	7122.0
SwissProt ID	O00501.The antiserum was produced against synthesized peptide derived from human Claudin 5 around the phosphorylation site of Tyr217. AA range:169-218

Application

Dilution Ratio	IHC 1:100-1:300 ELISA: 1:5000
Molecular Weight	23kD

Background

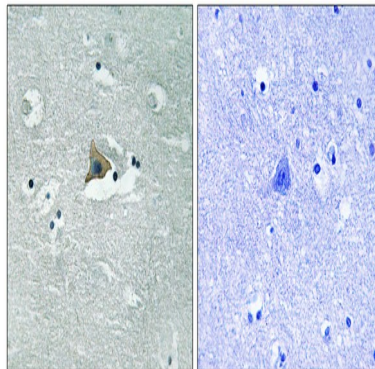
Product Name: Claudin-5 (phospho Tyr217) Rabbit Polyclonal Antibody
Catalog #: APRab04473

This gene encodes a member of the claudin family. Claudins are integral membrane proteins and components of tight junction strands. Tight junction strands serve as a physical barrier to prevent solutes and water from passing freely through the paracellular space between epithelial or endothelial cell sheets. Mutations in this gene have been found in patients with velocardiofacial syndrome. Alternatively spliced transcript variants encoding the same protein have been found for this gene. [provided by RefSeq, Aug 2008],function:Plays a major role in tight junction-specific obliteration of the intercellular space.,similarity:Belongs to the claudin family.,subunit:Directly interacts with TJP1/ZO-1, TJP2/ZO-2 and TJP3/ZO-3. Interacts with MPDZ.,

Research Area

Cell adhesion molecules (CAMs);Tight junction;Leukocyte transendothelial migration;

Image Data



Immunohistochemistry analysis of paraffin-embedded human brain, using Claudin 5 (Phospho-Tyr217) Antibody. The picture on the right is blocked with the phospho peptide.

Note

For research use only.