

Product Name: Cdc37 (phospho Ser13) Rabbit Polyclonal Antibody
Catalog #: APRab04426

Summary

Production Name	Cdc37 (phospho Ser13) Rabbit Polyclonal Antibody
Description	Rabbit Polyclonal Antibody
Host	Rabbit
Application	IHC,WB,
Reactivity	Human,Mouse,Rat

Performance

Conjugation	Unconjugated
Modification	Phospho Antibody
Isotype	IgG
Clonality	Polyclonal
Form	Liquid
Storage	Store at 4°C short term. Aliquot and store at -20°C long term. Avoid freeze/thaw cycles.
Buffer	Liquid in PBS containing 50% glycerol, 0.5% BSA and 0.02% New type preservative N.
Purification	Affinity purification

Immunogen

Gene Name	CDC37
Alternative Names	CDC37; CDC37A; Hsp90 co-chaperone Cdc37; Hsp90 chaperone protein kinase-targeting subunit; p50Cdc37
Gene ID	11140.0
SwissProt ID	Q16543.The antiserum was produced against synthesized peptide derived from human CDC37 around the phosphorylation site of Ser13. AA range:1-50

Application

Dilution Ratio	WB 1:500 - 1:2000. IHC 1:100 - 1:300. ELISA: 1:20000..
Molecular Weight	44kD

Product Name: Cdc37 (phospho Ser13) Rabbit Polyclonal Antibody
Catalog #: APRab04426



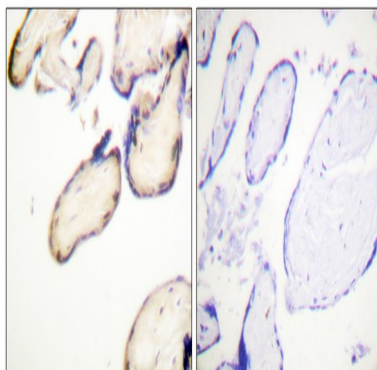
Background

The protein encoded by this gene is highly similar to Cdc 37, a cell division cycle control protein of *Saccharomyces cerevisiae*. This protein is a molecular chaperone with specific function in cell signal transduction. It has been shown to form complex with Hsp90 and a variety of protein kinases including CDK4, CDK6, SRC, RAF-1, MOK, as well as eIF2 alpha kinases. It is thought to play a critical role in directing Hsp90 to its target kinases. [provided by RefSeq, Jul 2008],function:Co-chaperone that binds to numerous kinases and promotes their interaction with the Hsp90 complex, resulting in stabilization and promotion of their activity.,PTM:Constitutively sumoylated by UBE2L.,similarity:Belongs to the CDC37 family.,subunit:Forms a complex with Hsp90. Interacts with AR, CDK4, CDK6, EIF2AK1 and RB1.,

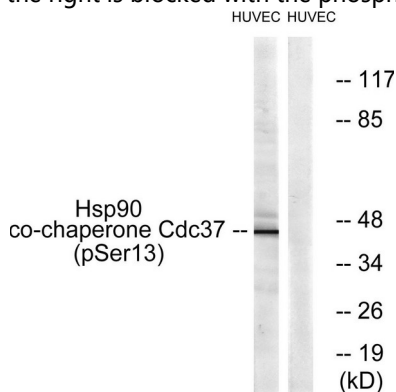
Research Area

PI3K/Akt

Image Data

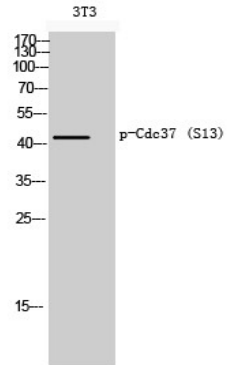


Immunohistochemistry analysis of paraffin-embedded human placenta, using CDC37 (Phospho-Ser13) Antibody. The picture on the right is blocked with the phospho peptide.

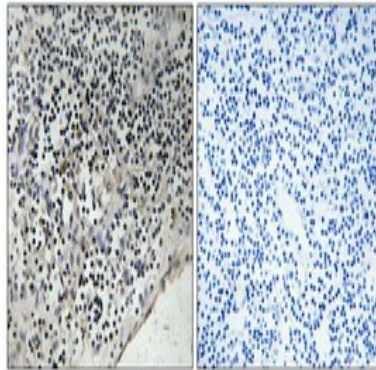


Western blot analysis of lysates from HUVEC cells, using CDC37 (Phospho-Ser13) Antibody. The lane on the right is blocked with the phospho peptide.

Product Name: Cdc37 (phospho Ser13) Rabbit Polyclonal Antibody
Catalog #: APRab04426



Western Blot analysis of 3T3 cells using Phospho-Cdc37 (S13) Polyclonal Antibody



Immunohistochemical analysis of paraffin-embedded Human lung cancer. Antibody was diluted at 1:100 (4°, overnight) . High-pressure and temperature Tris-EDTA, pH 8.0 was used for antigen retrieval. Negative control (right) obtained from antibody was pre-absorbed by immunogen peptide.

Note

For research use only.