

**Product Name: CD88 (phospho Ser338) Rabbit Polyclonal Antibody**  
**Catalog #: APRab04410**

---

## Summary

<b>Production Name</b>	CD88 (phospho Ser338) Rabbit Polyclonal Antibody
<b>Description</b>	Rabbit Polyclonal Antibody
<b>Host</b>	Rabbit
<b>Application</b>	IHC,ELISA
<b>Reactivity</b>	Human,Rat,Mouse

## Performance

<b>Conjugation</b>	Unconjugated
<b>Modification</b>	Phospho Antibody
<b>Isotype</b>	IgG
<b>Clonality</b>	Polyclonal
<b>Form</b>	Liquid
<b>Storage</b>	Store at 4°C short term. Aliquot and store at -20°C long term. Avoid freeze/thaw cycles.
<b>Buffer</b>	Liquid in PBS containing 50% glycerol, 0.5% BSA and 0.02% New type preservative N.
<b>Purification</b>	Affinity purification

## Immunogen

<b>Gene Name</b>	C5AR1
<b>Alternative Names</b>	C5AR1; C5AR; C5R1; C5a anaphylatoxin chemotactic receptor; C5a-R; C5aR; CD antigen CD88
<b>Gene ID</b>	728.0
<b>SwissProt ID</b>	P21730.The antiserum was produced against synthesized peptide derived from human CD88/C5aR around the phosphorylation site of Ser338. AA range:301-350

## Application

<b>Dilution Ratio</b>	IHC 1:100 - 1:300. ELISA: 1:40000..
<b>Molecular Weight</b>	

**Product Name: CD88 (phospho Ser338) Rabbit Polyclonal Antibody**  
**Catalog #: APRab04410**

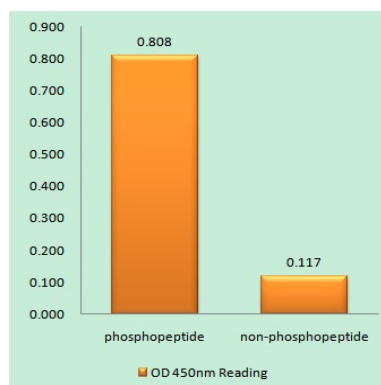
## Background

function: Receptor for the chemotactic and inflammatory peptide anaphylatoxin C5a. This receptor stimulates chemotaxis, granule enzyme release and superoxide anion production.,PTM: Sulfation plays a critical role in the association of the receptor with C5a, but no significant role in the ability of the receptor to transduce a signal and mobilize calcium in response to a small peptide agonist.,similarity: Belongs to the G-protein coupled receptor 1 family.,function: Receptor for the chemotactic and inflammatory peptide anaphylatoxin C5a. This receptor stimulates chemotaxis, granule enzyme release and superoxide anion production.,PTM: Sulfation plays a critical role in the association of the receptor with C5a, but no significant role in the ability of the receptor to transduce a signal and mobilize calcium in response to a small peptide agonist.,similarity: Belongs to the G-protein coupled receptor 1 family.,

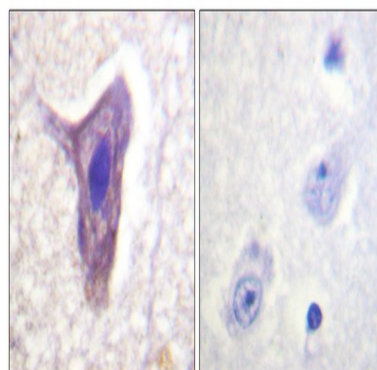
## Research Area

Neuroactive ligand-receptor interaction; Complement and coagulation cascades;

## Image Data



Enzyme-Linked Immunosorbent Assay (Phospho-ELISA) for Immunogen Phosphopeptide (Phospho-left) and Non-Phosphopeptide (Phospho-right), using CD88/C5aR (Phospho-Ser338) Antibody



Immunohistochemistry analysis of paraffin-embedded human brain, using CD88/C5aR (Phospho-Ser338) Antibody. The

**Product Name: CD88 (phospho Ser338) Rabbit  
Polyclonal Antibody  
Catalog #: APRab04410**



---

picture on the right is blocked with the phospho peptide.

**Note**

For research use only.