

Product Name: CD32 (phospho Tyr292) Rabbit Polyclonal Antibody
Catalog #: APRab04401

Summary

| | |
|------------------------|--|
| Production Name | CD32 (phospho Tyr292) Rabbit Polyclonal Antibody |
| Description | Rabbit Polyclonal Antibody |
| Host | Rabbit |
| Application | WB |
| Reactivity | Human,Mouse,Rat |

Performance

| | |
|---------------------|--|
| Conjugation | Unconjugated |
| Modification | Phospho Antibody |
| Isotype | IgG |
| Clonality | Polyclonal |
| Form | Liquid |
| Storage | Store at 4°C short term. Aliquot and store at -20°C long term. Avoid freeze/thaw cycles. |
| Buffer | Liquid in PBS containing 50% glycerol, 0.5% BSA and 0.02% New type preservative N. |
| Purification | Affinity purification |

Immunogen

| | |
|--------------------------|--|
| Gene Name | FCGR2B FCGR2B; CD32; FCG2; IGFR2; Low affinity immunoglobulin gamma Fc region receptor |
| Alternative Names | II-b; IgG Fc receptor II-b; CDw32; Fc-gamma RII-b; Fc-gamma-RIIb; FcRII-b; CD antigen CD32 |
| Gene ID | 2213.0 |
| SwissProt ID | P31994.The antiserum was produced against synthesized peptide derived from human CD32 around the phosphorylation site of Tyr292. AA range:258-307 |

Application

| | |
|-------------------------|----------------------------------|
| Dilution Ratio | WB 1:500-1:2000. ELISA: 1:10000. |
| Molecular Weight | 32kD |

Product Name: CD32 (phospho Tyr292) Rabbit Polyclonal Antibody
Catalog #: APRab04401

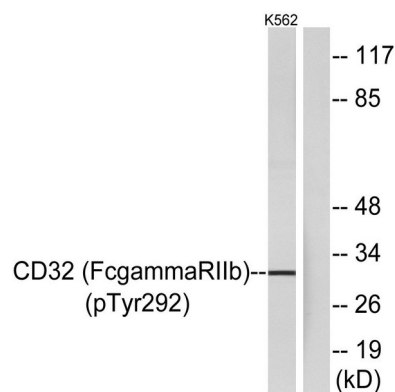
Background

The Fc fragment of IgG receptor IIb encoded by FCGR2B is a low affinity receptor for the Fc region of immunoglobulin gamma complexes. The encoded protein is involved in the phagocytosis of immune complexes and in the regulation of antibody production by B-cells. Variations in this gene may increase susceptibility to systemic lupus erythematosus (SLE). Several transcript variants encoding different isoforms have been found for this gene. immune response,

Research Area

B_Cell_Antigen;Fc gamma R-mediated phagocytosis;Systemic lupus erythematosus;

Image Data



Western blot analysis of lysates from K562 cells treated with PMA 125ng/ml 30 ' , using CD32 (Phospho-Tyr292) Antibody. The lane on the right is blocked with the phospho peptide.

Note

For research use only.