

Product Name: Catalase (phospho Tyr386) Rabbit Polyclonal Antibody
Catalog #: APRab04377

Summary

Production Name	Catalase (phospho Tyr386) Rabbit Polyclonal Antibody
Description	Rabbit Polyclonal Antibody
Host	Rabbit
Application	ELISA,IHC,WB,
Reactivity	Human,Mouse,Rat

Performance

Conjugation	Unconjugated
Modification	Phospho Antibody
Isotype	IgG
Clonality	Polyclonal
Form	Liquid
Storage	Store at 4°C short term. Aliquot and store at -20°C long term. Avoid freeze/thaw cycles.
Buffer	Liquid in PBS containing 50% glycerol, 0.5% BSA and 0.02% New type preservative N.
Purification	Affinity purification

Immunogen

Gene Name	CAT
Alternative Names	CAT; Catalase
Gene ID	847.0
SwissProt ID	P04040.The antiserum was produced against synthesized peptide derived from human Catalase around the phosphorylation site of Tyr385. AA range:361-410

Application

Dilution Ratio	WB 1:500 - 1:2000 IHC 1:100 - 1:300. ELISA: 1:20000..
Molecular Weight	59kD

Product Name: Catalase (phospho Tyr386) Rabbit Polyclonal Antibody
Catalog #: APRab04377

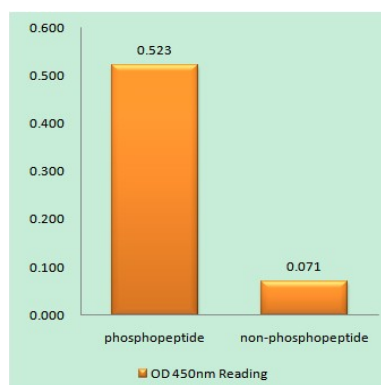
Background

This gene encodes catalase, a key antioxidant enzyme in the bodies defense against oxidative stress. Catalase is a heme enzyme that is present in the peroxisome of nearly all aerobic cells. Catalase converts the reactive oxygen species hydrogen peroxide to water and oxygen and thereby mitigates the toxic effects of hydrogen peroxide. Oxidative stress is hypothesized to play a role in the development of many chronic or late-onset diseases such as diabetes, asthma, Alzheimer's disease, systemic lupus erythematosus, rheumatoid arthritis, and cancers. Polymorphisms in this gene have been associated with decreases in catalase activity but, to date, acatalasemia is the only disease known to be caused by this gene. [provided by RefSeq, Oct 2009],catalytic activity: $2 \text{ H}_2\text{O}_2 = \text{O}_2 + 2 \text{ H}_2\text{O}$,cofactor:Heme group.,cofactor:NADP.,disease:Defects in CAT are the cause of acatalasia (ACATLAS) [MIM:115500]; also known as acatalasemia. This disease is characterized by absence of catalase activity in red cells and is often associated with ulcerating oral lesions.,function:Occurs in almost all aerobically respiring organisms and serves to protect cells from the toxic effects of hydrogen peroxide. Promotes growth of cells including T-cells, B-cells, myeloid leukemia cells, melanoma cells, mastocytoma cells and normal and transformed fibroblast cells.,online information:Catalase entry,PTM:The N-terminus is blocked.,similarity:Belongs to the catalase family.,subunit:Homotetramer.,

Research Area

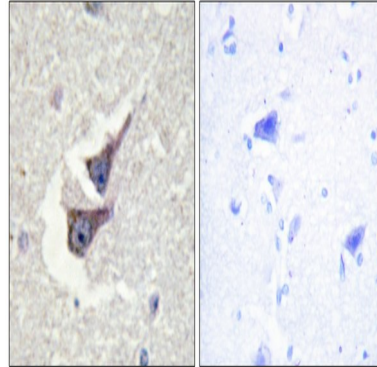
Tryptophan metabolism;Methane metabolism;Amyotrophic lateral sclerosis (ALS);

Image Data

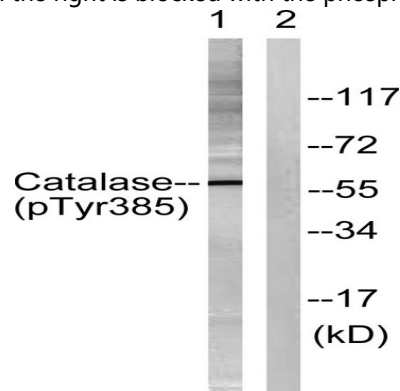


Enzyme-Linked Immunosorbent Assay (Phospho-ELISA) for Immunogen Phosphopeptide (Phospho-left) and Non-Phosphopeptide (Phospho-right) , using Catalase (Phospho-Tyr385) Antibody

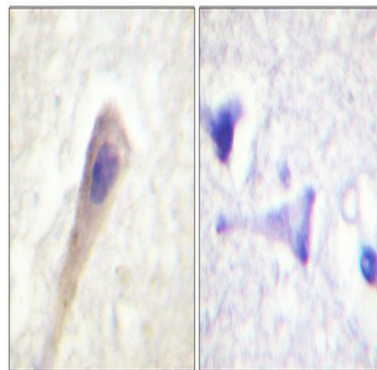
Product Name: Catalase (phospho Tyr386) Rabbit Polyclonal Antibody
Catalog #: APRab04377



Immunohistochemistry analysis of paraffin-embedded human brain, using Catalase (Phospho-Tyr385) Antibody. The picture on the right is blocked with the phospho peptide.



Western blot analysis of lysates from Jurkat cells, using Catalase (Phospho-Tyr385) Antibody. The lane on the right is blocked with the phospho peptide.



Immunohistochemical analysis of paraffin-embedded Human brain. Antibody was diluted at 1:100 (4°, overnight) . High-pressure and temperature Tris-EDTA, pH8.0 was used for antigen retrieval. Negative control (right) obtained from antibody was pre-absorbed by immunogen peptide.

Note

For research use only.

**Product Name: Catalase (phospho Tyr386) Rabbit
Polyclonal Antibody
Catalog #: APRab04377**

