

**Product Name: Caspase-9 (phospho Ser196) Rabbit Polyclonal Antibody**  
**Catalog #: APRab04373**

---

## Summary

<b>Production Name</b>	Caspase-9 (phospho Ser196) Rabbit Polyclonal Antibody
<b>Description</b>	Rabbit Polyclonal Antibody
<b>Host</b>	Rabbit
<b>Application</b>	ELISA,WB,
<b>Reactivity</b>	Human,Rat,Mouse

## Performance

<b>Conjugation</b>	Unconjugated
<b>Modification</b>	Phospho Antibody
<b>Isotype</b>	IgG
<b>Clonality</b>	Polyclonal
<b>Form</b>	Liquid
<b>Storage</b>	Store at 4°C short term. Aliquot and store at -20°C long term. Avoid freeze/thaw cycles.
<b>Buffer</b>	Liquid in PBS containing 50% glycerol, 0.5% BSA and 0.02% New type preservative N.
<b>Purification</b>	Affinity purification

## Immunogen

<b>Gene Name</b>	CASP9
<b>Alternative Names</b>	CASP9; MCH6; Caspase-9; CASP-9; Apoptotic protease Mch-6; Apoptotic protease-activating factor 3; APAF-3; ICE-like apoptotic protease 6; ICE-LAP6
<b>Gene ID</b>	842.0
<b>SwissProt ID</b>	P55211.The antiserum was produced against synthesized peptide derived from human Caspase 9 around the phosphorylation site of Ser196. AA range:162-211

## Application

<b>Dilution Ratio</b>	WB 1:500 - 1:2000. ELISA: 1:20000..
<b>Molecular Weight</b>	46kD

**Product Name: Caspase-9 (phospho Ser196) Rabbit Polyclonal Antibody**  
**Catalog #: APRab04373**



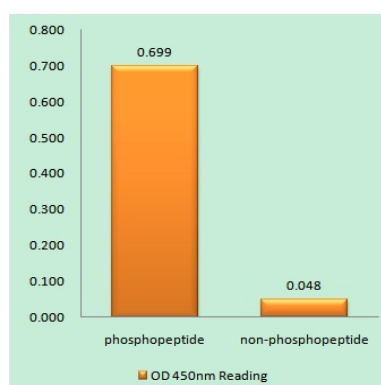
## Background

CASP9 encodes a member of the cysteine-aspartic acid protease (caspase) family. Sequential activation of caspases plays a central role in the execution-phase of cell apoptosis. Caspases exist as inactive proenzymes which undergo proteolytic processing at conserved aspartic residues to produce two subunits, large and small, that dimerize to form the active enzyme. Caspase 9 can undergo autoproteolytic processing and activation by the apoptosome, a protein complex of cytochrome c and the apoptotic peptidase activating factor 1; this step is thought to be one of the earliest in the caspase activation cascade. Caspase 9 is thought to play a central role in apoptosis and to be a tumor suppressor. Alternative splicing results in multiple transcript variants. catalytic activity: Strict requirement for an Asp residue at position P1 and with a marked preference for His at position P2. It has a preferred cleavage sequence of Leu-Gly-His-Asp-|-Xaa., function: Involved in the activation cascade of caspases responsible for apoptosis execution. Binding of caspase-9 to Apaf-1 leads to activation of the protease which then cleaves and activates caspase-3. Proteolytically cleaves poly(ADP-ribose) polymerase (PARP)., function: Isoform 2 lacks activity is an dominant-negative inhibitor of caspase-9., online information: Caspase-9 entry, PTM: Cleavages at Asp-315 by granzyme B and at Asp-330 by caspase-3 generate the two active subunits. Caspase-8 and -10 can also be involved in these processing events., similarity: Belongs to the peptidase C14A family., similarity: Contains 1 CARD domain., subunit: Heterotetramer that consists of two anti-parallel arranged heterodimers, each one formed by a 35 kDa (p35) and a 10 kDa (p10) subunit. Caspase-9 and APAF1 bind to each other via their respective NH2-terminal CED-3 homologous domains in the presence of cytochrome C and ATP. Interacts with the inhibitors BIRC2, BIRC4, BIRC5 and BIRC7., tissue specificity: Ubiquitous, with highest expression in the heart, moderate expression in liver, skeletal muscle, and pancreas. Low levels in all other tissues.,

## Research Area

p53; Apoptosis\_Inhibition; Apoptosis\_Mitochondrial; Apoptosis\_Overview; VEGF; Alzheimer's disease; Parkinson's disease; Amyotrophic lateral sclerosis (ALS); Huntington's disease; Pathways in cancer; Colorectal cancer; Pancreatic cancer; Endometrial cancer; Prostate cancer; Small cell lung cancer; Non-small cell lung cancer; Viral myocarditis;

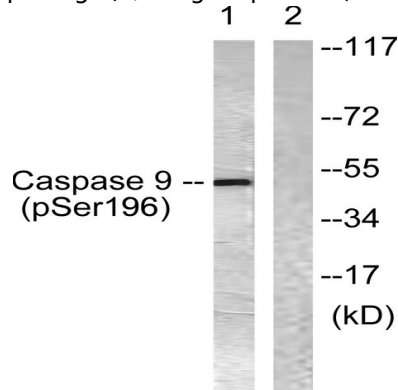
## Image Data



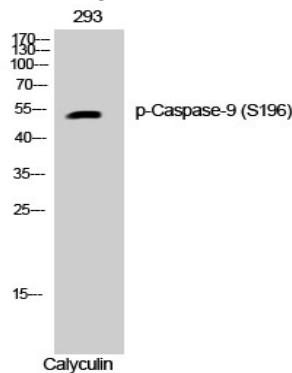
**Product Name: Caspase-9 (phospho Ser196) Rabbit Polyclonal Antibody**  
**Catalog #: APRab04373**



Enzyme-Linked Immunosorbent Assay (Phospho-ELISA) for Immunogen Phosphopeptide (Phospho-left) and Non-Phosphopeptide (Phospho-right), using Caspase 9 (Phospho-Ser196) Antibody



Western blot analysis of lysates from 293 cells treated with Calyculin 50nM 30', using Caspase 9 (Phospho-Ser196) Antibody. The lane on the right is blocked with the phospho peptide.



Western Blot analysis of 293 cells using Phospho-Caspase-9 (S196) Polyclonal Antibody diluted at 1: 1000

**Note**

For research use only.