

**Product Name: Casein Kinase II $\alpha$  (phospho Tyr255)  
Rabbit Polyclonal Antibody  
Catalog #: APRab04361**

---

## Summary

<b>Production Name</b>	Casein Kinase II $\alpha$ (phospho Tyr255) Rabbit Polyclonal Antibody
<b>Description</b>	Rabbit Polyclonal Antibody
<b>Host</b>	Rabbit
<b>Application</b>	ELISA,WB,
<b>Reactivity</b>	Human,Mouse,Rat

## Performance

<b>Conjugation</b>	Unconjugated
<b>Modification</b>	Phospho Antibody
<b>Isotype</b>	IgG
<b>Clonality</b>	Polyclonal
<b>Form</b>	Liquid
<b>Storage</b>	Store at 4°C short term. Aliquot and store at -20°C long term. Avoid freeze/thaw cycles.
<b>Buffer</b>	Liquid in PBS containing 50% glycerol, 0.5% BSA and 0.02% New type preservative N.
<b>Purification</b>	Affinity purification

## Immunogen

<b>Gene Name</b>	CSNK2A1
<b>Alternative Names</b>	CSNK2A1; CK2A1; Casein kinase II subunit alpha; CK II alpha
<b>Gene ID</b>	1457.0
<b>SwissProt ID</b>	P68400.The antiserum was produced against synthesized peptide derived from human Casein Kinase II alpha around the phosphorylation site of Tyr255. AA range:221-270

## Application

<b>Dilution Ratio</b>	WB 1:500 - 1:2000. ELISA: 1:10000..
<b>Molecular Weight</b>	45kD

**Product Name: Casein Kinase II $\alpha$  (phospho Tyr255)  
Rabbit Polyclonal Antibody  
Catalog #: APRab04361**

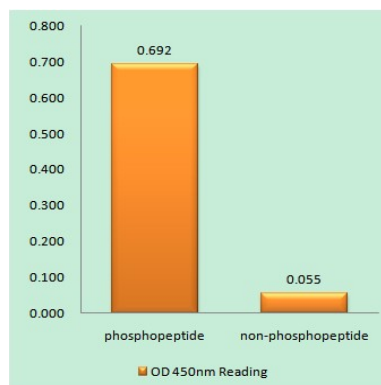
## Background

Casein kinase II is a serine/threonine protein kinase that phosphorylates acidic proteins such as casein. It is involved in various cellular processes, including cell cycle control, apoptosis, and circadian rhythm. The kinase exists as a tetramer and is composed of an alpha, an alpha-prime, and two beta subunits. The alpha subunits contain the catalytic activity while the beta subunits undergo autophosphorylation. The protein encoded by this gene represents the alpha subunit. While this gene is found on chromosome 20, a related transcribed pseudogene is found on chromosome 11. Three transcript variants encoding two different proteins have been found for this gene. [provided by RefSeq, Jul 2014], catalytic activity: ATP + a protein = ADP + a phosphoprotein., function: Casein kinases are operationally defined by their preferential utilization of acidic proteins such as caseins as substrates. The alpha and alpha' chains contain the catalytic site. Participates in Wnt signaling. CK2 phosphorylates 'Ser-392' of p53/TP53 following UV irradiation., similarity: Belongs to the protein kinase superfamily., similarity: Belongs to the protein kinase superfamily. Ser/Thr protein kinase family. CK2 subfamily., similarity: Contains 1 protein kinase domain., subunit: Tetramer composed of an alpha chain, an alpha' and two beta chains. Also component of a CK2-SPT16-SSRP1 complex composed of SSRP1, SUPT16H, CSNK2A1, CSNK2A2 and CSNK2B, the complex associating following UV irradiation. Interacts with RNPS1.,

## Research Area

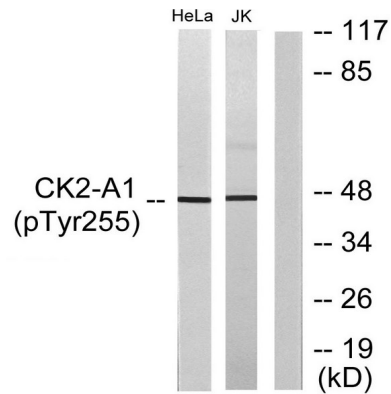
WNT; WNT-T CELL Adherens\_Junction; Adherens\_Junction;

## Image Data

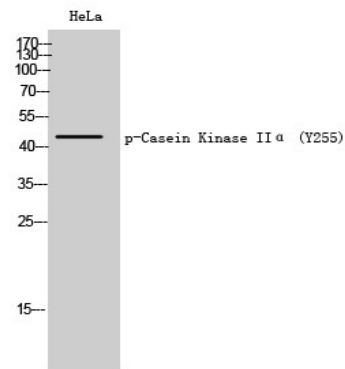


Enzyme-Linked Immunosorbent Assay (Phospho-ELISA) for Immunogen Phosphopeptide (Phospho-left) and Non-Phosphopeptide (Phospho-right), using Casein Kinase II alpha (Phospho-Tyr255) Antibody

**Product Name: Casein Kinase II $\alpha$  (phospho Tyr255)  
Rabbit Polyclonal Antibody  
Catalog #: APRab04361**



Western blot analysis of lysates from HeLa cells and Jurkat cells, using Casein Kinase II alpha (Phospho-Tyr255) Antibody. The lane on the right is blocked with the phospho peptide.



Western Blot analysis of HeLa cells using Phospho-Casein Kinase II $\alpha$  (Y255) Polyclonal Antibody cells nucleus extracted by Minute TM Cytoplasmic and Nuclear Fractionation kit (SC-003, Inventbiotech, MN, USA) .

## Note

For research use only.