

**Product Name: Caldesmon (phospho Ser789) Rabbit Polyclonal Antibody**  
**Catalog #: APRab04351**



---

## Summary

<b>Production Name</b>	Caldesmon (phospho Ser789) Rabbit Polyclonal Antibody
<b>Description</b>	Rabbit Polyclonal Antibody
<b>Host</b>	Rabbit
<b>Application</b>	IF,IHC,WB,ELISA
<b>Reactivity</b>	Human,Mouse,Rat

## Performance

<b>Conjugation</b>	Unconjugated
<b>Modification</b>	Phospho Antibody
<b>Isotype</b>	IgG
<b>Clonality</b>	Polyclonal
<b>Form</b>	Liquid
<b>Storage</b>	Store at 4°C short term. Aliquot and store at -20°C long term. Avoid freeze/thaw cycles.
<b>Buffer</b>	Liquid in PBS containing 50% glycerol, 0.5% BSA and 0.02% New type preservative N.
<b>Purification</b>	Affinity purification

## Immunogen

<b>Gene Name</b>	CALD1
<b>Alternative Names</b>	CALD1; CAD; CDM; Caldesmon; CDM
<b>Gene ID</b>	800.0
<b>SwissProt ID</b>	Q05682.The antiserum was produced against synthesized peptide derived from human Caldesmon around the phosphorylation site of Ser789. AA range:744-793

## Application

<b>Dilution Ratio</b>	WB 1:500 - 1:2000. IHC 1:100 - 1:300. IF 1:200 - 1:1000. ELISA: 1:5000. Not yet tested in other applications.
<b>Molecular Weight</b>	80kD

**Product Name: Caldesmon (phospho Ser789) Rabbit Polyclonal Antibody**  
**Catalog #: APRab04351**



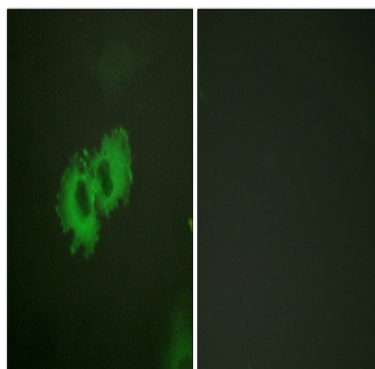
## Background

This gene encodes a calmodulin- and actin-binding protein that plays an essential role in the regulation of smooth muscle and nonmuscle contraction. The conserved domain of this protein possesses the binding activities to Ca(2+)-calmodulin, actin, tropomyosin, myosin, and phospholipids. This protein is a potent inhibitor of the actin-tropomyosin activated myosin MgATPase, and serves as a mediating factor for Ca(2+)-dependent inhibition of smooth muscle contraction. Alternative splicing of this gene results in multiple transcript variants encoding distinct isoforms. [provided by RefSeq, Jul 2008],domain:The N-terminal part seems to be a myosin/calmodulin-binding domain, and the C-terminal a tropomyosin/actin/calmodulin-binding domain. These two domains are separated by a central helical region in the smooth-muscle form.,function:Actin- and myosin-binding protein implicated in the regulation of actomyosin interactions in smooth muscle and nonmuscle cells (could act as a bridge between myosin and actin filaments). Stimulates actin binding of tropomyosin which increases the stabilization of actin filament structure. In muscle tissues, inhibits the actomyosin ATPase by binding to F-actin. This inhibition is attenuated by calcium-calmodulin and is potentiated by tropomyosin. Interacts with actin, myosin, two molecules of tropomyosin and with calmodulin. Also play an essential role during cellular mitosis and receptor capping.,PTM:In non-muscle cells, phosphorylation by CDC2 during mitosis causes caldesmon to dissociate from microfilaments. Phosphorylation reduces caldesmon binding to actin, myosin, and calmodulin as well as its inhibition of actomyosin ATPase activity. Phosphorylation also occurs in both quiescent and dividing smooth muscle cells with similar effects on the interaction with actin and calmodulin and on microfilaments reorganization.,similarity:Belongs to the caldesmon family.,subcellular location:On thin filaments in smooth muscle and on stress fibers in fibroblasts (nonmuscle),tissue specificity:High-molecular-weight caldesmon (isoform 1) is predominantly expressed in smooth muscles, whereas low-molecular-weight caldesmon (isoforms 2, 3, 4 and 5) are widely distributed in non-muscle tissues and cells. Not expressed in skeletal muscle or heart,.

## Research Area

Vascular smooth muscle contraction;

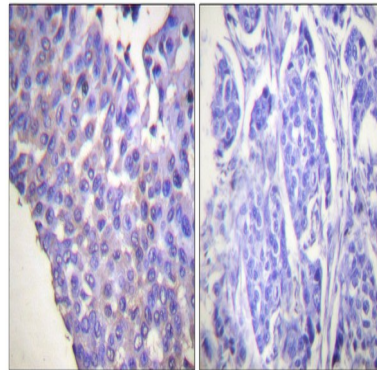
## Image Data



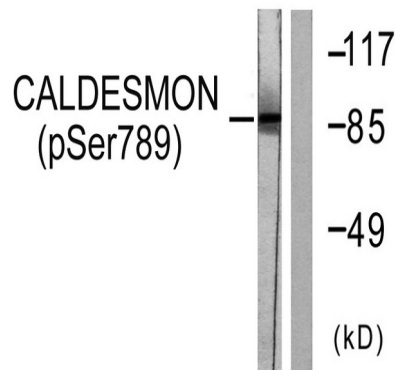
**Product Name: Caldesmon (phospho Ser789) Rabbit Polyclonal Antibody**  
**Catalog #: APRab04351**



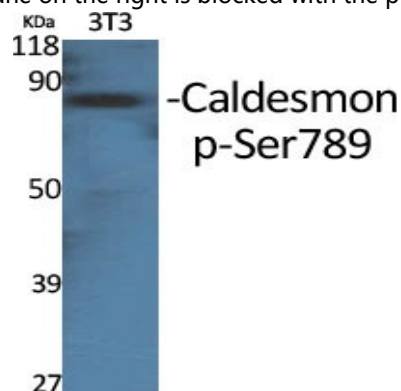
Immunofluorescence analysis of HeLa cells, using Caldesmon (Phospho-Ser789) Antibody. The picture on the right is blocked with the phospho peptide.



Immunohistochemistry analysis of paraffin-embedded human breast carcinoma, using Caldesmon (Phospho-Ser789) Antibody. The picture on the right is blocked with the phospho peptide.



Western blot analysis of lysates from HeLa cells treated with EGF 200ng/ml 30', using Caldesmon (Phospho-Ser789) Antibody. The lane on the right is blocked with the phospho peptide.



Western Blot analysis of various cells using Phospho-Caldesmon (S789) Polyclonal Antibody

**Product Name: Caldesmon (phospho Ser789) Rabbit  
Polyclonal Antibody  
Catalog #: APRab04351**



Western Blot analysis of 293 cells using Phospho-Caldesmon (S789) Polyclonal Antibody

**Note**

For research use only.