

Product Name: C3G (phospho Tyr504) Rabbit Polyclonal Antibody
Catalog #: APRab04343



Summary

Production Name	C3G (phospho Tyr504) Rabbit Polyclonal Antibody
Description	Rabbit Polyclonal Antibody
Host	Rabbit
Application	WB,ELISA
Reactivity	Human,Rat,Mouse

Performance

Conjugation	Unconjugated
Modification	Phospho Antibody
Isotype	IgG
Clonality	Polyclonal
Form	Liquid
Storage	Store at 4°C short term. Aliquot and store at -20°C long term. Avoid freeze/thaw cycles.
Buffer	Liquid in PBS containing 50% glycerol, 0.5% BSA and 0.02% New type preservative N.
Purification	Affinity purification

Immunogen

Gene Name	RAPGEF1
Alternative Names	RAPGEF1; GRF2; Rap guanine nucleotide exchange factor 1; CRK SH3-binding GNRP; Guanine nucleotide-releasing factor 2; Protein C3G
Gene ID	2889.0
SwissProt ID	Q13905.The antiserum was produced against synthesized peptide derived from human RapGEF1 around the phosphorylation site of Tyr504. AA range:470-519

Application

Dilution Ratio	WB 1:500 - 1:2000. ELISA: 1:10000
Molecular Weight	120kD

Product Name: C3G (phospho Tyr504) Rabbit Polyclonal Antibody
Catalog #: APRab04343

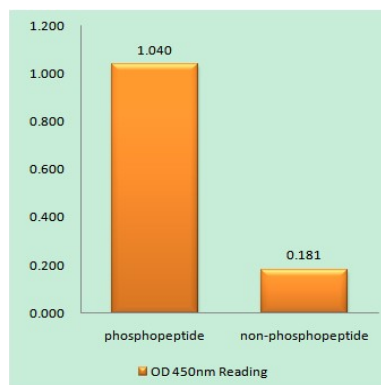
Background

This gene encodes a human guanine nucleotide exchange factor. It transduces signals from CRK by binding the SH3 domain of CRK, and activating several members of the Ras family of GTPases. This signaling cascade that may be involved in apoptosis, integrin-mediated signal transduction, and cell transformation. Several alternatively spliced transcript variants of this gene have been described, but the full-length nature of some variants has not been determined. [provided by RefSeq, Jul 2008],function:Guanine nucleotide-releasing protein that binds to SH3 domain of CRK and GRB2/ASH. Transduces signals from CRK to activate RAS.,similarity:Contains 1 N-terminal Ras-GEF domain.,similarity:Contains 1 Ras-GEF domain.,subunit:Interacts with CRK via its SH3-binding sites.,tissue specificity:Ubiquitously expressed in adult and fetus. Expression is high in adult skeletal muscle and placenta and in fetal brain and heart. Low levels of expression in adult and fetal liver.,

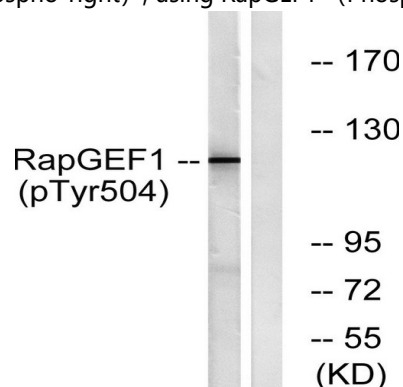
Research Area

Regulation of Actin Dynamics; AMPK

Image Data



Enzyme-Linked Immunosorbent Assay (Phospho-ELISA) for Immunogen Phosphopeptide (Phospho-left) and Non-Phosphopeptide (Phospho-right) , using RapGEF1 (Phospho-Tyr504) Antibody





**Product Name: C3G (phospho Tyr504) Rabbit Polyclonal
Antibody**
Catalog #: APRab04343

Western blot analysis of lysates from HepG2 cells treated with Na₃VO₄ 0.3nM 40', using RapGEF1 (Phospho-Tyr504) Antibody. The lane on the right is blocked with the phospho peptide.

Note

For research use only.