

Product Name: C/EBP β (phospho Thr235) Rabbit Polyclonal Antibody
Catalog #: APRab04341

Summary

Production Name	C/EBP β (phospho Thr235) Rabbit Polyclonal Antibody
Description	Rabbit Polyclonal Antibody
Host	Rabbit
Application	WB,IHC,IF,ELISA
Reactivity	Human,Mouse,Rat

Performance

Conjugation	Unconjugated
Modification	Phospho Antibody
Isotype	IgG
Clonality	Polyclonal
Form	Liquid
Storage	Store at 4°C short term. Aliquot and store at -20°C long term. Avoid freeze/thaw cycles.
Buffer	Liquid in PBS containing 50% glycerol, 0.5% BSA and 0.02% New type preservative N.
Purification	Affinity purification

Immunogen

Gene Name	CEBPB
Alternative Names	CEBPB; LAP; TCF5; PP9092; CCAAT/enhancer-binding protein beta; C/EBP beta; Liver activator protein; Nuclear factor NF-IL6; Transcription factor 5; TCF-5
Gene ID	1051.0
SwissProt ID	P17676.The antiserum was produced against synthesized peptide derived from human C/EBP-beta around the phosphorylation site of Thr235/188. AA range:201-250

Application

Dilution Ratio	WB 1:500 - 1:2000. IHC 1:100 - 1:300. IF 1:200 - 1:1000. ELISA: 1:10000. Not yet tested in other applications.
-----------------------	--

Product Name: C/EBP β (phospho Thr235) Rabbit Polyclonal Antibody
Catalog #: APRab04341

Molecular Weight 36kD

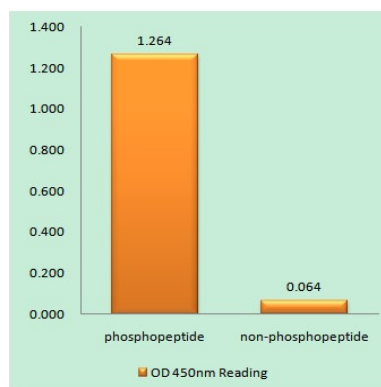
Background

This intronless gene encodes a transcription factor that contains a basic leucine zipper (bZIP) domain. The encoded protein functions as a homodimer but can also form heterodimers with CCAAT/enhancer-binding proteins alpha, delta, and gamma. Activity of this protein is important in the regulation of genes involved in immune and inflammatory responses, among other processes. The use of alternative in-frame AUG start codons results in multiple protein isoforms, each with distinct biological functions. [provided by RefSeq, Oct 2013],function:Important transcriptional activator in the regulation of genes involved in immune and inflammatory responses. Specifically binds to an IL-1 response element in the IL-6 gene. NF-IL6 also binds to regulatory regions of several acute-phase and cytokines genes. It probably plays a role in the regulation of acute-phase reaction, inflammation and hemopoiesis. The consensus recognition site is 5'-T[**TG**]NNGNAA[**TG**]-3',.PTM:Sumoylated by polymeric chains of SUMO2 or SUMO3.,similarity:Belongs to the bZIP family.,similarity:Belongs to the bZIP family. C/EBP subfamily.,similarity:Contains 1 bZIP domain.,subunit:Binds DNA as a dimer and can form stable heterodimers with C/EBP alpha, delta and gamma. Interacts with TRIM28 and PTGES2.,tissue specificity:Expressed at low levels in the lung, kidney and spleen.,

Research Area

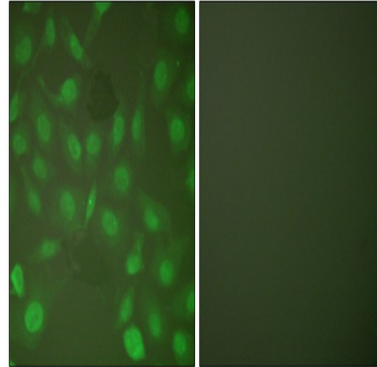
Stem cell pathway; Protein_Acetylation

Image Data

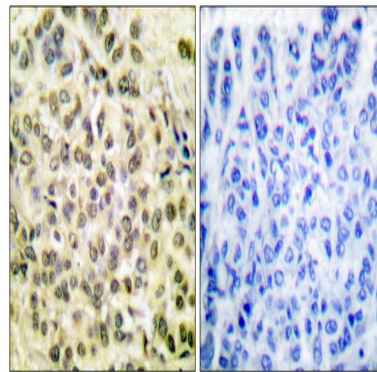


Enzyme-Linked Immunosorbent Assay (Phospho-ELISA) for Immunogen Phosphopeptide (Phospho-left) and Non-Phosphopeptide (Phospho-right) , using C/EBP-beta (Phospho-Thr235/188) Antibody

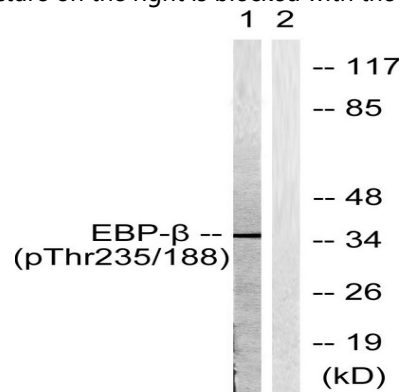
Product Name: C/EBP β (phospho Thr235) Rabbit Polyclonal Antibody
Catalog #: APRab04341



Immunofluorescence analysis of HepG2 cells, using C/EBP-beta (Phospho-Thr235/188) Antibody. The picture on the right is blocked with the phospho peptide.

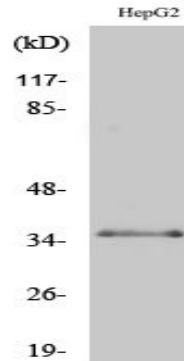


Immunohistochemistry analysis of paraffin-embedded human breast carcinoma, using C/EBP-beta (Phospho-Thr235/188) Antibody. The picture on the right is blocked with the phospho peptide.

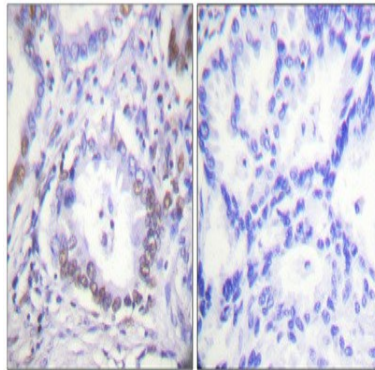


Western blot analysis of lysates from HepG2 cells treated with EGF 200ng/ml 30', using C/EBP-beta (Phospho-Thr235/188) Antibody. The lane on the right is blocked with the phospho peptide.

Product Name: C/EBP β (phospho Thr235) Rabbit Polyclonal Antibody
Catalog #: APRab04341



Western Blot analysis of various cells using Phospho-C/EBP β (T235) Polyclonal Antibody diluted at 1: 500



Immunohistochemical analysis of paraffin-embedded Human lung cancer. Antibody was diluted at 1:100 (4°, overnight) . High-pressure and temperature Tris-EDTA, pH 8.0 was used for antigen retrieval. Negative control (right) obtained from antibody was pre-absorbed by immunogen peptide.

Note

For research use only.