

**Product Name: C/EBP  $\alpha$  (phospho Ser21) Rabbit Polyclonal Antibody**  
**Catalog #: APRab04338**

---

## Summary

<b>Production Name</b>	C/EBP $\alpha$ (phospho Ser21) Rabbit Polyclonal Antibody
<b>Description</b>	Rabbit Polyclonal Antibody
<b>Host</b>	Rabbit
<b>Application</b>	IHC,WB,
<b>Reactivity</b>	Human,Mouse,Rat

## Performance

<b>Conjugation</b>	Unconjugated
<b>Modification</b>	Phospho Antibody
<b>Isotype</b>	IgG
<b>Clonality</b>	Polyclonal
<b>Form</b>	Liquid
<b>Storage</b>	Store at 4°C short term. Aliquot and store at -20°C long term. Avoid freeze/thaw cycles.
<b>Buffer</b>	Liquid in PBS containing 50% glycerol, 0.5% BSA and 0.02% New type preservative N.
<b>Purification</b>	Affinity purification

## Immunogen

<b>Gene Name</b>	CEBPA
<b>Alternative Names</b>	CEBPA; CCAAT/enhancer-binding protein alpha; C/EBP alpha
<b>Gene ID</b>	1050.0
<b>SwissProt ID</b>	P49715.The antiserum was produced against synthesized peptide derived from human C/EBP-alpha around the phosphorylation site of Ser21. AA range:6-55

## Application

<b>Dilution Ratio</b>	WB 1:500 - 1:2000. IHC 1:100 - 1:300. ELISA: 1:5000..
<b>Molecular Weight</b>	42kd

**Product Name: C/EBP  $\alpha$  (phospho Ser21) Rabbit Polyclonal Antibody**  
**Catalog #: APRab04338**

---

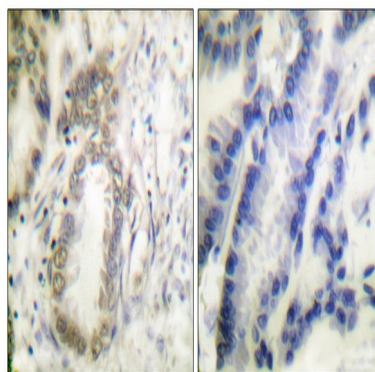
## Background

This intronless gene encodes a transcription factor that contains a basic leucine zipper (bZIP) domain and recognizes the CCAAT motif in the promoters of target genes. The encoded protein functions in homodimers and also heterodimers with CCAAT/enhancer-binding proteins beta and gamma. Activity of this protein can modulate the expression of genes involved in cell cycle regulation as well as in body weight homeostasis. Mutation of this gene is associated with acute myeloid leukemia. The use of alternative in-frame non-AUG (GUG) and AUG start codons results in protein isoforms with different lengths. Differential translation initiation is mediated by an out-of-frame, upstream open reading frame which is located between the GUG and the first AUG start codons. [provided by RefSeq, Dec 2013],function:C/EBP is a DNA-binding protein that recognizes two different motifs: the CCAAT homology common to many promoters and the enhanced core homology common to many enhancers.,similarity:Belongs to the bZIP family.,similarity:Belongs to the bZIP family. C/EBP subfamily.,similarity:Contains 1 bZIP domain.,subunit:Binds DNA as a dimer and can form stable heterodimers with C/EBP beta and gamma. Interacts with UBN1. Interacts with HBV protein X,

## Research Area

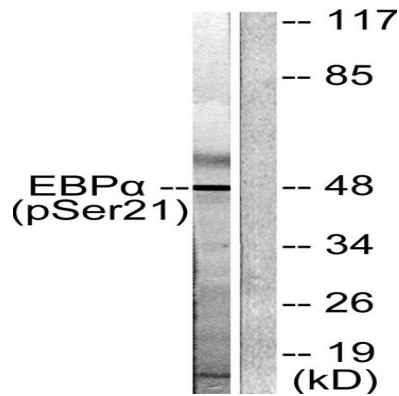
Pathways in cancer;Acute myeloid leukemia;

## Image Data

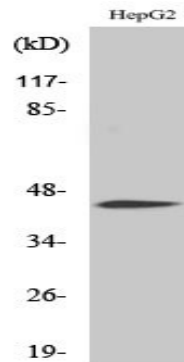


Immunohistochemistry analysis of paraffin-embedded human lung carcinoma, using C/EBP-alpha (Phospho-Ser21) Antibody. The picture on the right is blocked with the phospho peptide.

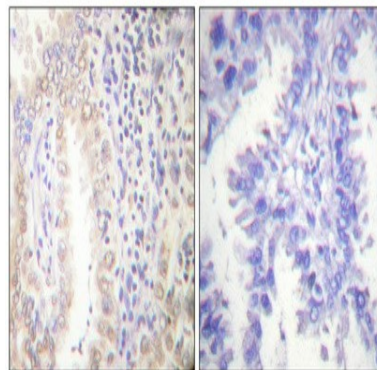
**Product Name: C/EBP  $\alpha$  (phospho Ser21) Rabbit Polyclonal Antibody**  
**Catalog #: APRab04338**



Western blot analysis of lysates from HepG2 cells treated with EGF 200ng/ml 5', using C/EBP-alpha (Phospho-Ser21) Antibody. The lane on the right is blocked with the phospho peptide.



Western Blot analysis of various cells using Phospho-C/EBP  $\alpha$  (S21) Polyclonal Antibody cells nucleus extracted by Minute TM Cytoplasmic and Nuclear Fractionation kit (SC-003, Inventbiotech, MN, USA).



Immunohistochemical analysis of paraffin-embedded Human lung cancer. Antibody was diluted at 1:100 (4°, overnight). High-pressure and temperature Tris-EDTA, pH 8.0 was used for antigen retrieval. Negative control (right) obtained from antibody was pre-absorbed by immunogen peptide.

## Note

For research use only.

**Product Name: C/EBP  $\alpha$  (phospho Ser21) Rabbit  
Polyclonal Antibody  
Catalog #: APRab04338**

---

