

**Product Name: Blk (phospho Tyr501) Rabbit Polyclonal Antibody**  
**Catalog #: APRab04322**



## Summary

<b>Production Name</b>	Blk (phospho Tyr501) Rabbit Polyclonal Antibody
<b>Description</b>	Rabbit Polyclonal Antibody
<b>Host</b>	Rabbit
<b>Application</b>	IHC,ELISA
<b>Reactivity</b>	Human,Mouse,Rat

## Performance

<b>Conjugation</b>	Unconjugated
<b>Modification</b>	Phospho Antibody
<b>Isotype</b>	IgG
<b>Clonality</b>	Polyclonal
<b>Form</b>	Liquid
<b>Storage</b>	Store at 4°C short term. Aliquot and store at -20°C long term. Avoid freeze/thaw cycles.
<b>Buffer</b>	Liquid in PBS containing 50% glycerol, 0.5% BSA and 0.02% New type preservative N.
<b>Purification</b>	Affinity purification

## Immunogen

<b>Gene Name</b>	BLK
<b>Alternative Names</b>	BLK; Tyrosine-protein kinase Blk; B lymphocyte kinase; p55-Blk
<b>Gene ID</b>	640.0
<b>SwissProt ID</b>	P51451.The antiserum was produced against synthesized peptide derived from human BLK around the phosphorylation site of Tyr501. AA range:456-505

## Application

<b>Dilution Ratio</b>	IHC 1:100-1:300 ELISA: 1:20000
<b>Molecular Weight</b>	

## Background

**Product Name: Blk (phospho Tyr501) Rabbit Polyclonal Antibody**  
**Catalog #: APRab04322**

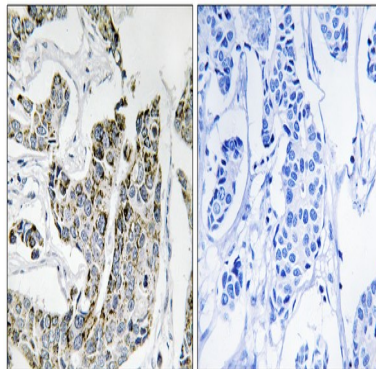


---

This gene encodes a nonreceptor tyrosine-kinase of the src family of proto-oncogenes that are typically involved in cell proliferation and differentiation. The protein has a role in B-cell receptor signaling and B-cell development. The protein also stimulates insulin synthesis and secretion in response to glucose and enhances the expression of several pancreatic beta-cell transcription factors. [provided by RefSeq, Aug 2010],catalytic activity:ATP + a [protein]-L-tyrosine = ADP + a [protein]-L-tyrosine phosphate.,function:May function in a signal transduction pathway that is restricted to B-lymphoid cells.,similarity:Belongs to the protein kinase superfamily. Tyr protein kinase family. SRC subfamily.,similarity:Contains 1 protein kinase domain.,similarity:Contains 1 SH2 domain.,similarity:Contains 1 SH3 domain.,

## Research Area

## Image Data



Immunohistochemistry analysis of paraffin-embedded human breast carcinoma, using BLK (Phospho-Tyr501) Antibody.  
The picture on the right is blocked with the phospho peptide.

## Note

For research use only.