

**Product Name: Bcl-6 (phospho Ser333) Rabbit Polyclonal Antibody**  
**Catalog #: APRab04309**

---

## Summary

<b>Production Name</b>	Bcl-6 (phospho Ser333) Rabbit Polyclonal Antibody
<b>Description</b>	Rabbit Polyclonal Antibody
<b>Host</b>	Rabbit
<b>Application</b>	WB,ELISA
<b>Reactivity</b>	Human,Mouse,Rat

## Performance

<b>Conjugation</b>	Unconjugated
<b>Modification</b>	Phospho Antibody
<b>Isotype</b>	IgG
<b>Clonality</b>	Polyclonal
<b>Form</b>	Liquid
<b>Storage</b>	Store at 4°C short term. Aliquot and store at -20°C long term. Avoid freeze/thaw cycles.
<b>Buffer</b>	Liquid in PBS containing 50% glycerol, 0.5% BSA and 0.02% New type preservative N.
<b>Purification</b>	Affinity purification

## Immunogen

<b>Gene Name</b>	BCL6 BCL6; BCL5; LAZ3; ZBTB27; ZNF51; B-cell lymphoma 6 protein; BCL-6; B-cell lymphoma
<b>Alternative Names</b>	5 protein; BCL-5; Protein LAZ-3; Zinc finger and BTB domain-containing protein 27; Zinc finger protein 51
<b>Gene ID</b>	604.0
<b>SwissProt ID</b>	P41182.The antiserum was produced against synthesized peptide derived from human Bcl-6 around the phosphorylation site of Ser333. AA range:299-348

## Application

<b>Dilution Ratio</b>	WB 1:500 - 1:2000. ELISA: 1:5000. Not yet tested in other applications.
<b>Molecular Weight</b>	79kD

---

**Product Name: Bcl-6 (phospho Ser333) Rabbit Polyclonal Antibody**  
**Catalog #: APRab04309**

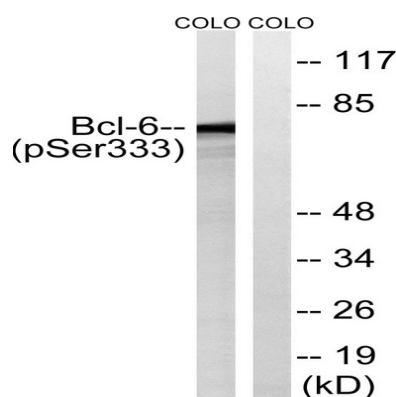
## Background

The protein encoded by this gene is a zinc finger transcription factor and contains an N-terminal POZ domain. This protein acts as a sequence-specific repressor of transcription, and has been shown to modulate the transcription of STAT-dependent IL-4 responses of B cells. This protein can interact with a variety of POZ-containing proteins that function as transcription corepressors. This gene is found to be frequently translocated and hypermutated in diffuse large-cell lymphoma (DLCL), and may be involved in the pathogenesis of DLCL. Alternatively spliced transcript variants encoding different protein isoforms have been found for this gene. [provided by RefSeq, Aug 2015],disease:A chromosomal aberration involving BCL6 may be a cause of a form of B-cell leukemia. Translocation t(3;11)(q27;q23) with POU2AF1/OBF1.,disease:A chromosomal aberration involving BCL6 may be a cause of lymphoma. Translocation t(3;4)(q27;p11) with ARHH/TTF.,disease:Chromosomal aberrations involving BCL6 may be a cause of B-cell non-Hodgkin lymphoma. Translocation t(3;14)(q27;q32); translocation t(3;22)(q27;q11) with immunoglobulin gene regions.,function:Transcriptional repressor which is required for germinal center formation and antibody affinity maturation. Probably plays an important role in lymphomagenesis.,induction:Down-regulated during maturation of dendritic cells by selective stimuli such as LPS, CD40L and zymosan.,PTM:Phosphorylated by MAPK1 in response to antigen receptor activation. Phosphorylation induces its degradation, by ubiquitin/proteasome pathway.,similarity:Contains 1 BTB (POZ) domain.,similarity:Contains 6 C2H2-type zinc fingers.,subunit:Interacts with ZBTB7 and BCL6B (By similarity). Interacts with the catalytic domain of HDAC9.,tissue specificity:Expressed in germinal center T and B cells and in primary immature dendritic cells.,

## Research Area

B\_Cell\_Antigen

## Image Data

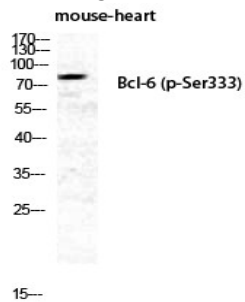


Western blot analysis of lysates from COLO205 cells treated with insulin 0.01U/ml 15', using Bcl-6 (Phospho-Ser333)

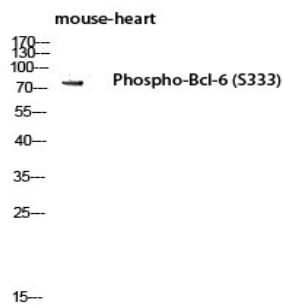
**Product Name: Bcl-6 (phospho Ser333) Rabbit Polyclonal Antibody**  
**Catalog #: APRab04309**



Antibody. The lane on the right is blocked with the phospho peptide.



Western Blot analysis of MOUSE-HEART cells using Phospho-Bcl-6 (S333) Polyclonal Antibody diluted at 1: 1000 cells nucleus extracted by Minute TM Cytoplasmic and Nuclear Fractionation kit (SC-003, Inventbiotech, MN, USA) .



Western blot analysis of mouse-heart lysis using Phospho-Bcl-6 (S333) antibody. Antibody was diluted at 1:1000 cells nucleus extracted by Minute TM Cytoplasmic and Nuclear Fractionation kit (SC-003, Inventbiotech, MN, USA) .

## Note

For research use only.