

Product Name: Axl (phospho Tyr691) Rabbit Polyclonal Antibody
Catalog #: APRab04289



Summary

Production Name	Axl (phospho Tyr691) Rabbit Polyclonal Antibody
Description	Rabbit Polyclonal Antibody
Host	Rabbit
Application	IHC,WB,ELISA
Reactivity	Human,Mouse,Rat

Performance

Conjugation	Unconjugated
Modification	Phospho Antibody
Isotype	IgG
Clonality	Polyclonal
Form	Liquid
Storage	Store at 4°C short term. Aliquot and store at -20°C long term. Avoid freeze/thaw cycles.
Buffer	Liquid in PBS containing 50% glycerol, 0.5% BSA and 0.02% New type preservative N.
Purification	Affinity purification

Immunogen

Gene Name	AXL UFO
Alternative Names	AXL; UFO; Tyrosine-protein kinase receptor UFO; AXL oncogene
Gene ID	558.0
SwissProt ID	P30530.The antiserum was produced against synthesized peptide derived from human AXL around the phosphorylation site of Tyr691. AA range:657-706

Application

Dilution Ratio	WB 1:500 - 1:2000. IHC 1:100 - 1:300. ELISA: 1:20000..
Molecular Weight	130kD

Product Name: Axl (phospho Tyr691) Rabbit Polyclonal Antibody
Catalog #: APRab04289

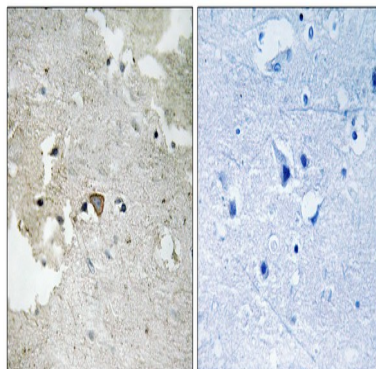


Background

The protein encoded by this gene is a member of the Tyro3-Axl-Mer (TAM) receptor tyrosine kinase subfamily. The encoded protein possesses an extracellular domain which is composed of two immunoglobulin-like motifs at the N-terminal, followed by two fibronectin type-III motifs. It transduces signals from the extracellular matrix into the cytoplasm by binding to the vitamin K-dependent protein growth arrest-specific 6 (Gas6). This gene may be involved in several cellular functions including growth, migration, aggregation and anti-inflammation in multiple cell types. Alternative splicing results in multiple transcript variants of this gene. [provided by RefSeq, Jul 2013],catalytic activity:ATP + a [protein]-L-tyrosine = ADP + a [protein]-L-tyrosine phosphate.,disease:Has transforming potential in patients with chronic myeloproliferative disorder or chronic myelocytic leukemia.,function:May function as a signal transducer between specific cell types of mesodermal origin. In case of filovirus infection, seems to function as a cell entry factor.,similarity:Belongs to the protein kinase superfamily. Tyr protein kinase family. AXL/UFO subfamily.,similarity:Contains 1 protein kinase domain.,similarity:Contains 2 fibronectin type-III domains.,similarity:Contains 2 Ig-like C2-type (immunoglobulin-like) domains.,subunit:Heterodimer and heterotetramer with GAS6.,tissue specificity:Highly expressed in metastatic colon tumors. Expressed in primary colon tumors. Weakly expressed in normal colon tissue.,

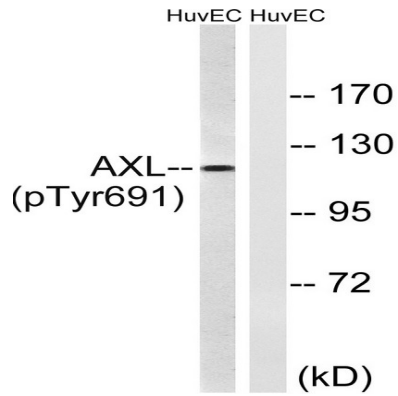
Research Area

Image Data



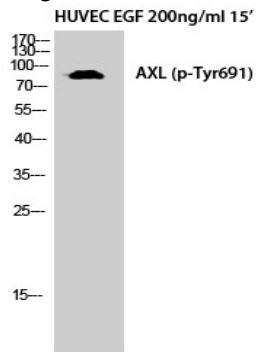
Immunohistochemistry analysis of paraffin-embedded human brain, using AXL (Phospho-Tyr691) Antibody. The picture on the right is blocked with the phospho peptide.

Product Name: Axl (phospho Tyr691) Rabbit Polyclonal Antibody
Catalog #: APRab04289



Western blot analysis of lysates from HUVEC cells treated with EGF 200ng/ml 15', using AXL (Phospho-Tyr691) Antibody.

The lane on the right is blocked with the phospho peptide.



Western Blot analysis of HuvEc cells using Phospho-Axl (Y691) Polyclonal Antibody diluted at 1: 500

Note

For research use only.