

**Product Name: APLP2 (phospho Tyr755) Rabbit Polyclonal Antibody**  
**Catalog #: APRab04247**

---

## Summary

<b>Production Name</b>	APLP2 (phospho Tyr755) Rabbit Polyclonal Antibody
<b>Description</b>	Rabbit Polyclonal Antibody
<b>Host</b>	Rabbit
<b>Application</b>	IHC,ELISA
<b>Reactivity</b>	Human,Mouse,Rat

## Performance

<b>Conjugation</b>	Unconjugated
<b>Modification</b>	Phospho Antibody
<b>Isotype</b>	IgG
<b>Clonality</b>	Polyclonal
<b>Form</b>	Liquid
<b>Storage</b>	Store at 4°C short term. Aliquot and store at -20°C long term. Avoid freeze/thaw cycles.
<b>Buffer</b>	Liquid in PBS containing 50% glycerol, 0.5% BSA and 0.02% New type preservative N.
<b>Purification</b>	Affinity purification

## Immunogen

<b>Gene Name</b>	APLP2
<b>Alternative Names</b>	APLP2; APPL2; Amyloid-like protein 2; APLP-2; APPH; Amyloid protein homolog; CDEI box-binding protein; CDEBP
<b>Gene ID</b>	334.0
<b>SwissProt ID</b>	Q06481.The antiserum was produced against synthesized peptide derived from human APLP2 around the phosphorylation site of Tyr755. AA range:714-763

## Application

<b>Dilution Ratio</b>	IHC 1:100-1:300 ELISA: 1:20000
<b>Molecular Weight</b>	

**Product Name: APLP2 (phospho Tyr755) Rabbit Polyclonal Antibody**  
**Catalog #: APRab04247**

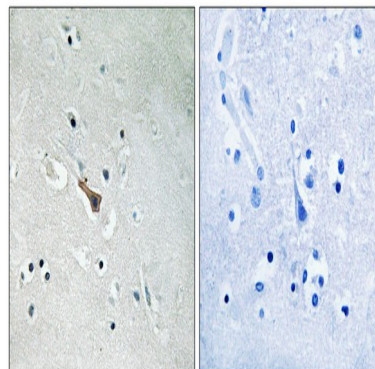
---

## Background

This gene encodes amyloid precursor- like protein 2 (APLP2), which is a member of the APP (amyloid precursor protein) family including APP, APLP1 and APLP2. This protein is ubiquitously expressed. It contains heparin-, copper- and zinc-binding domains at the N-terminus, BPTI/Kunitz inhibitor and E2 domains in the middle region, and transmembrane and intracellular domains at the C-terminus. This protein interacts with major histocompatibility complex (MHC) class I molecules. The synergy of this protein and the APP is required to mediate neuromuscular transmission, spatial learning and synaptic plasticity. This protein has been implicated in the pathogenesis of Alzheimer's disease. Multiple alternatively spliced transcript variants encoding different isoforms have been identified. [provided by RefSeq, Aug 2011], alternative products: Additional isoforms seem to exist, function: May play a role in the regulation of hemostasis. The soluble form may have inhibitory properties towards coagulation factors. May interact with cellular G-protein signaling pathways. May bind to the DNA 5'-GTCACATG-3'(CDEI box). Inhibits trypsin, chymotrypsin, plasmin, factor XIA and plasma and glandular kallikrein., PTM: The BPTI/Kunitz inhibitor domain is O-glycosylated., similarity: Belongs to the APP family., similarity: Contains 1 BPTI/Kunitz inhibitor domain., subunit: Interacts with CPEB1., tissue specificity: In placenta, brain, heart, lung, liver, kidney and endothelial tissues.,

## Research Area

## Image Data



Immunohistochemistry analysis of paraffin-embedded human brain, using APLP2 (Phospho-Tyr755) Antibody. The picture on the right is blocked with the phospho peptide.

## Note

For research use only.