

Product Name: APC1 (phospho Ser688) Rabbit Polyclonal Antibody
Catalog #: APRab04245

Summary

Production Name	APC1 (phospho Ser688) Rabbit Polyclonal Antibody
Description	Rabbit Polyclonal Antibody
Host	Rabbit
Application	ELISA,IF,IHC
Reactivity	Human,Mouse,Rat

Performance

Conjugation	Unconjugated
Modification	Phospho Antibody
Isotype	IgG
Clonality	Polyclonal
Form	Liquid
Storage	Store at 4°C short term. Aliquot and store at -20°C long term. Avoid freeze/thaw cycles.
Buffer	Liquid in PBS containing 50% glycerol, 0.5% BSA and 0.02% New type preservative N.
Purification	Affinity purification

Immunogen

Gene Name	ANAPC1
Alternative Names	ANAPC1; TSG24; Anaphase-promoting complex subunit 1; APC1; Cyclosome subunit 1; Mitotic checkpoint regulator; Testis-specific gene 24 protein
Gene ID	64682.0
SwissProt ID	Q9H1A4.The antiserum was produced against synthesized peptide derived from human APC1 around the phosphorylation site of Ser688. AA range:654-703

Application

Dilution Ratio	IHC 1:100 - 1:300. IF 1:200 - 1:1000. ELISA: 1:10000. Not yet tested in other applications.
Molecular Weight	

Product Name: APC1 (phospho Ser688) Rabbit Polyclonal Antibody
Catalog #: APRab04245

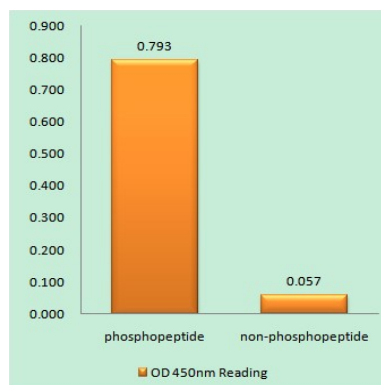
Background

This gene encodes a subunit of the anaphase-promoting complex. This complex is an E3 ubiquitin ligase that regulates progression through the metaphase to anaphase portion of the cell cycle by ubiquitinating proteins which targets them for degradation. [provided by RefSeq, Dec 2011],function:Component of the anaphase promoting complex/cyclosome (APC/C), a cell cycle-regulated E3 ubiquitin ligase that controls progression through mitosis and the G1 phase of the cell cycle.,pathway:Protein modification; protein ubiquitination.,PTM:Phosphorylated. Phosphorylation on Ser-355 occurs specifically during mitosis.,similarity:Belongs to the APC1 family.,similarity:Contains 4 PC repeats.,subunit:The APC/C is composed of at least 11 subunits.,

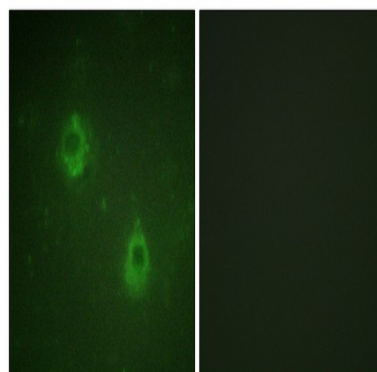
Research Area

Cell_Cycle_G1S;Cell_Cycle_G2M_DNA;Oocyte meiosis;Ubiquitin mediated proteolysis;Progesterone-mediated oocyte maturation;

Image Data

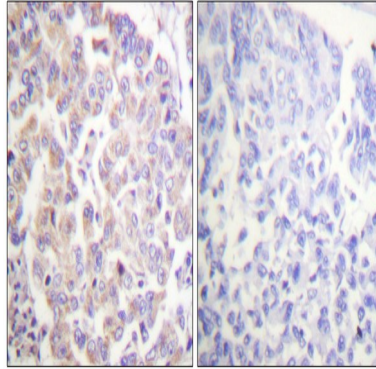


Enzyme-Linked Immunosorbent Assay (Phospho-ELISA) for Immunogen Phosphopeptide (Phospho-left) and Non-Phosphopeptide (Phospho-right), using APC1 (Phospho-Ser688) Antibody



Immunofluorescence analysis of COS7 cells, using APC1 (Phospho-Ser688) Antibody. The picture on the right is blocked with the phospho peptide.

**Product Name: APC1 (phospho Ser688) Rabbit
Polyclonal Antibody
Catalog #: APRab04245**



Immunohistochemistry analysis of paraffin-embedded human breast carcinoma, using APC1 (Phospho-Ser688) Antibody.
The picture on the right is blocked with the phospho peptide.

Note

For research use only.