

Product Name: 4E-BP1 (phospho Thr69) Rabbit Polyclonal Antibody
Catalog #: APRab04185

Summary

| | |
|------------------------|---|
| Production Name | 4E-BP1 (phospho Thr69) Rabbit Polyclonal Antibody |
| Description | Rabbit Polyclonal Antibody |
| Host | Rabbit |
| Application | ELISA,IHC,WB, |
| Reactivity | Mouse,Rat |

Performance

| | |
|---------------------|--|
| Conjugation | Unconjugated |
| Modification | Phospho Antibody |
| Isotype | IgG |
| Clonality | Polyclonal |
| Form | Liquid |
| Storage | Store at 4°C short term. Aliquot and store at -20°C long term. Avoid freeze/thaw cycles. |
| Buffer | Liquid in PBS containing 50% glycerol, 0.5% BSA and 0.02% New type preservative N. |
| Purification | Affinity purification |

Immunogen

| | |
|--------------------------|--|
| Gene Name | EIF4EBP1 EIF4EBP1; Eukaryotic translation initiation factor 4E-binding protein 1; 4E-BP1; eIF4E-binding protein 1; Phosphorylated heat- and acid-stable protein regulated by insulin 1; |
| Alternative Names | PHAS-I |
| Gene ID | 116636.0 |
| SwissProt ID | Q62622.The antiserum was produced against synthesized peptide derived from mouse 4E-BP1 around the phosphorylation site of Thr69. AA range:35-84 |

Application

| | |
|-------------------------|---|
| Dilution Ratio | WB 1:500 - 1:2000 IHC 1:100 - 1:300. ELISA: 1:20000.. |
| Molecular Weight | 12kD |

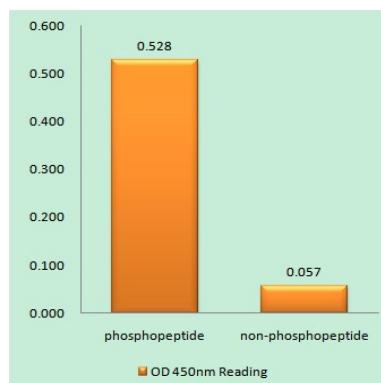
Product Name: 4E-BP1 (phospho Thr69) Rabbit Polyclonal Antibody
Catalog #: APRab04185

Background

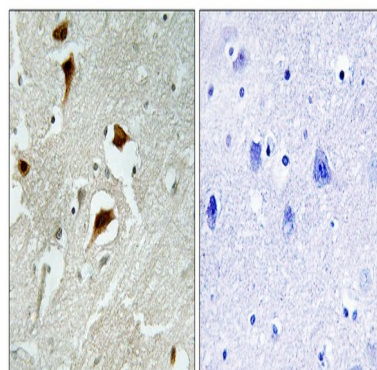
EIF4EBP1 encodes one member of a family of translation repressor proteins. The eukaryotic translation initiation factor 4E binding protein 1 directly interacts with eukaryotic translation initiation factor 4E (eIF4E), which is a limiting component of the multisubunit complex that recruits 40S ribosomal subunits to the 5' end of mRNAs. Interaction of this protein with eIF4E inhibits complex assembly and represses translation. This protein is phosphorylated in response to various signals including UV irradiation and insulin signaling, resulting in its dissociation from eIF4E and activation of mRNA translation.

Research Area

Image Data

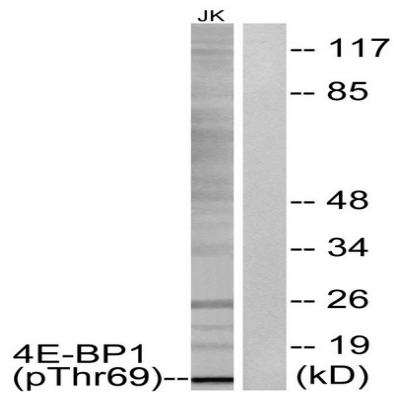


Enzyme-Linked Immunosorbent Assay (Phospho-ELISA) for Immunogen Phosphopeptide (Phospho-left) and Non-Phosphopeptide (Phospho-right), using 4E-BP1 (Phospho-Thr69) Antibody

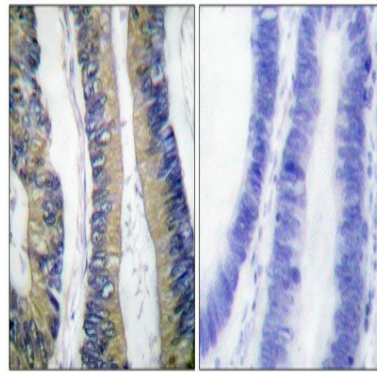


Immunohistochemistry analysis of paraffin-embedded human brain carcinoma, using 4E-BP1 (Phospho-Thr69) Antibody. The picture on the right is blocked with the phospho peptide.

Product Name: 4E-BP1 (phospho Thr69) Rabbit Polyclonal Antibody
Catalog #: APRab04185



Western blot analysis of lysates from Jurkat cells treated with EGF 200ng/ml 30', using 4E-BP1 (Phospho-Thr69) Antibody. The lane on the right is blocked with the phospho peptide.



Immunohistochemical analysis of paraffin-embedded Human colon cancer. Antibody was diluted at 1:100 (4°, overnight). High-pressure and temperature Tris-EDTA, pH 8.0 was used for antigen retrieval. Negative control (right) obtained from antibody was pre-absorbed by immunogen peptide.

Note

For research use only.