

Product Name: 14-3-3 ζ (phospho Ser58) Rabbit Polyclonal Antibody
Catalog #: APRab04177

Summary

Production Name	14-3-3 ζ (phospho Ser58) Rabbit Polyclonal Antibody
Description	Rabbit Polyclonal Antibody
Host	Rabbit
Application	WB,IHC,IF,ELISA
Reactivity	Human,Mouse,Rat

Performance

Conjugation	Unconjugated
Modification	Phospho Antibody
Isotype	IgG
Clonality	Polyclonal
Form	Liquid
Storage	Store at 4°C short term. Aliquot and store at -20°C long term. Avoid freeze/thaw cycles.
Buffer	Liquid in PBS containing 50% glycerol, 0.5% BSA and 0.02% New type preservative N.
Purification	Affinity purification

Immunogen

Gene Name	YWHAZ
Alternative Names	YWHAZ; 14-3-3 protein zeta/delta; Protein kinase C inhibitor protein 1; KCIP-1
Gene ID	7534.0
SwissProt ID	P63104.The antiserum was produced against synthesized peptide derived from human 14-3-3 zeta around the phosphorylation site of Ser58. AA range:24-73

Application

Dilution Ratio	Western Blot: 1/500 - 1/2000. Immunohistochemistry: 1/100 - 1/300. Immunofluorescence: 1/200 - 1/1000. ELISA: 1/40000. Not yet tested in other applications.
-----------------------	---

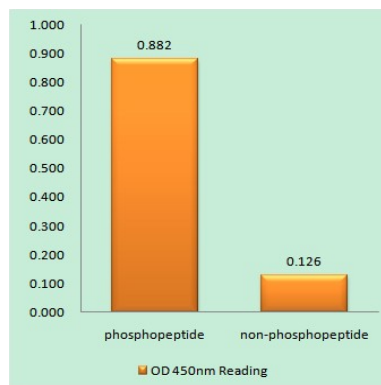
Product Name: 14-3-3 ζ (phospho Ser58) Rabbit Polyclonal Antibody
Catalog #: APRab04177

Molecular Weight

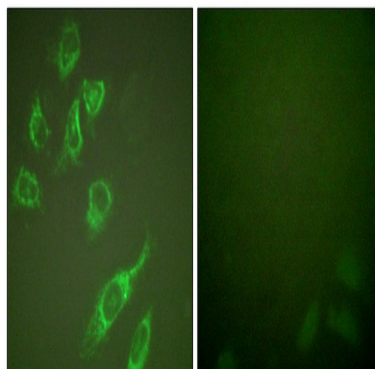
Background

Research Area

Image Data

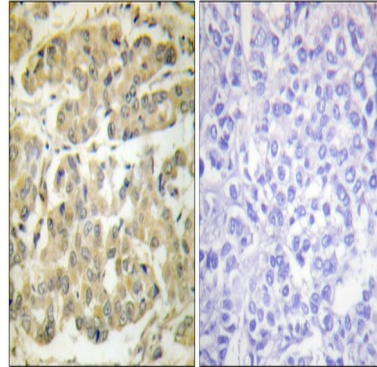


Enzyme-Linked Immunosorbent Assay (Phospho-ELISA) for Immunogen Phosphopeptide (Phospho-left) and Non-Phosphopeptide (Phospho-right), using 14-3-3 zeta (Phospho-Ser58) Antibody

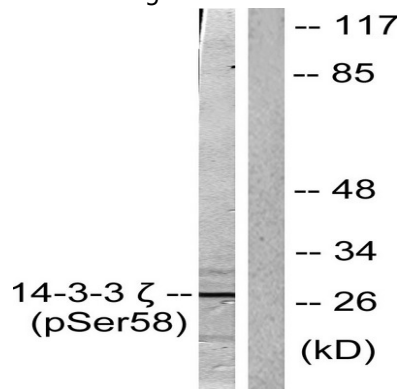


Immunofluorescence analysis of HeLa cells treated with PMA 125ng/ml 30, using 14-3-3 zeta (Phospho-Ser58) Antibody. The picture on the right is blocked with the phospho peptide.

Product Name: 14-3-3 ζ (phospho Ser58) Rabbit Polyclonal Antibody
Catalog #: APRab04177

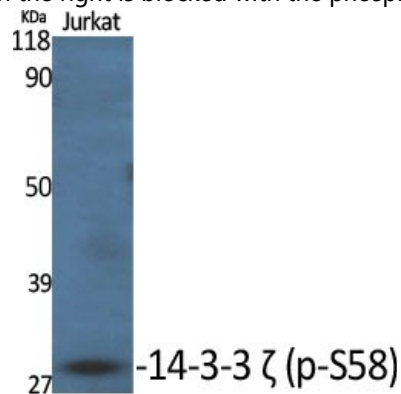


Immunohistochemistry analysis of paraffin-embedded human breast carcinoma, using 14-3-3 zeta (Phospho-Ser58) Antibody. The picture on the right is blocked with the phospho peptide.



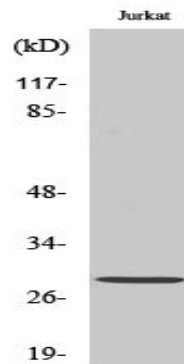
Western blot analysis of lysates from NIH/3T3 cells treated with UV 30', using 14-3-3 zeta (Phospho-Ser58) Antibody.

The lane on the right is blocked with the phospho peptide.



Western Blot analysis of various cells using Phospho-14-3-3 ζ (S58) Polyclonal Antibody diluted at 1 : 2000

**Product Name: 14-3-3 ζ (phospho Ser58) Rabbit
Polyclonal Antibody
Catalog #: APRab04177**



Western Blot analysis of Jurkat cells using Phospho-14-3-3 ζ (S58) Polyclonal Antibody diluted at 1: 2000

Note

For research use only.