

Product Name: 14-3-3 β/ζ (phospho Ser184/186) Rabbit Polyclonal Antibody
Catalog #: APRab04176

Summary

Production Name	14-3-3 β/ζ (phospho Ser184/186) Rabbit Polyclonal Antibody
Description	Rabbit Polyclonal Antibody
Host	Rabbit
Application	WB
Reactivity	Human,Mouse,Rat

Performance

Conjugation	Unconjugated
Modification	Phospho Antibody
Isotype	IgG
Clonality	Polyclonal
Form	Liquid
Storage	Store at 4°C short term. Aliquot and store at -20°C long term. Avoid freeze/thaw cycles.
Buffer	Liquid in PBS containing 50% glycerol, 0.5% BSA and 0.02% New type preservative N.
Purification	Affinity purification

Immunogen

Gene Name	YWHAB/YWHAZ
Alternative Names	YWHAZ; 14-3-3 protein zeta/delta; Protein kinase C inhibitor protein 1; KCIP-1; YWHAB; 14-3-3 protein beta/alpha; Protein 1054; Protein kinase C inhibitor protein 1; KCIP-1
Gene ID	7534/7529
SwissProt ID	P63104/P31946.The antiserum was produced against synthesized peptide derived from human 14-3-3 beta/zeta around the phosphorylation site of Ser184/186. AA range:151-200

Application

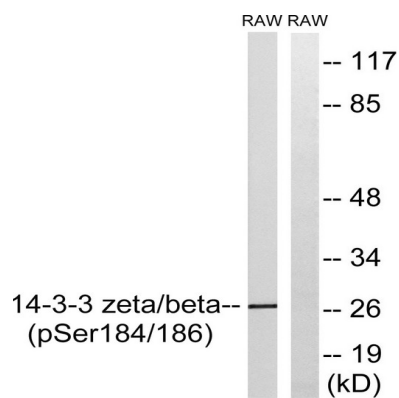
Dilution Ratio	WB: 1/500-1/2000. ELISA: 1/5000.
Molecular Weight	

Product Name: 14-3-3 β/ζ (phospho Ser184/186) Rabbit Polyclonal Antibody
Catalog #: APRab04176

Background

Research Area

Image Data



Western blot analysis of lysates from RAW264.7 cells treated with UV 15', using 14-3-3 beta/zeta (Phospho-Ser184/186) Antibody. The lane on the right is blocked with the phospho peptide.

Note

For research use only.