

**Product Name: Acetyl Histone H2B (K12) Rabbit Polyclonal Antibody**  
**Catalog #: APRab04162**

---

## Summary

<b>Production Name</b>	Acetyl Histone H2B (K12) Rabbit Polyclonal Antibody
<b>Description</b>	Rabbit Polyclonal Antibody
<b>Host</b>	Rabbit
<b>Application</b>	IF,IHC,WB,ELISA
<b>Reactivity</b>	Human,Mouse,Monkey

## Performance

<b>Conjugation</b>	Unconjugated
<b>Modification</b>	Acetyl Antibody
<b>Isotype</b>	IgG
<b>Clonality</b>	Polyclonal
<b>Form</b>	Liquid
<b>Storage</b>	Store at 4°C short term. Aliquot and store at -20°C long term. Avoid freeze/thaw cycles.
<b>Buffer</b>	Liquid in PBS containing 50% glycerol, 0.5% BSA and 0.02% New type preservative N.
<b>Purification</b>	Affinity purification

## Immunogen

<b>Gene Name</b>	H2BFS
<b>Alternative Names</b>	H2BFS; Histone H2B type F-S; Histone H2B.s; H2B/s
<b>Gene ID</b>	54145.0
<b>SwissProt ID</b>	P57053.The antiserum was produced against synthesized peptide derived from human Histone H2B around the acetylated site of Lys12. AA range:10-59

## Application

<b>Dilution Ratio</b>	WB 1:500 - 1:2000. IHC 1:100 - 1:300. IF 1:200 - 1:1000. ELISA: 1:10000. Not yet tested in other applications.
<b>Molecular Weight</b>	14kD

**Product Name: Acetyl Histone H2B (K12) Rabbit Polyclonal Antibody**  
**Catalog #: APRab04162**

---

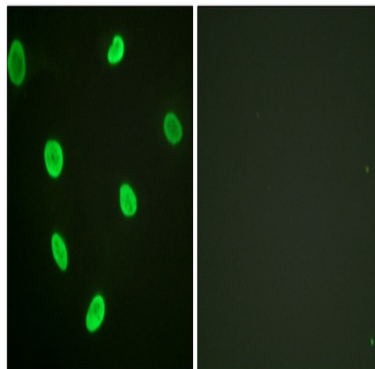
## Background

H2BFS (H2B Histone Family Member S (Pseudogene)) is a Pseudogene. Diseases associated with H2BFS include endometrial stromal sarcoma. Among its related pathways are Packaging Of Telomere Ends. GO annotations related to this gene include sequence-specific DNA binding and protein heterodimerization activity. An important paralog of this gene is HIST1H2BH. DNA packaging, chromatin organization, chromatin assembly or disassembly, nucleosome assembly, defense response, response to bacterium, chromatin assembly, cellular macromolecular complex subunit organization, cellular macromolecular complex assembly, nucleosome organization, defense response to bacterium, macromolecular complex subunit organization, chromosome organization, macromolecular complex assembly, protein-DNA complex assembly,

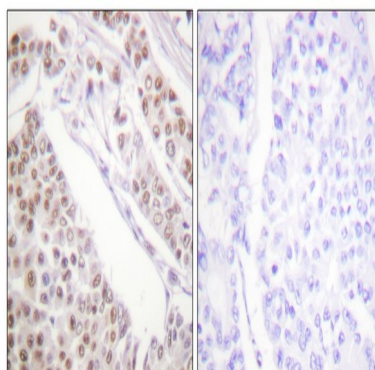
## Research Area

Protein\_Acetylation

## Image Data



Immunofluorescence analysis of HeLa cells, using Histone H2B (Acetyl-Lys12) Antibody. The picture on the right is blocked with the synthesized peptide.

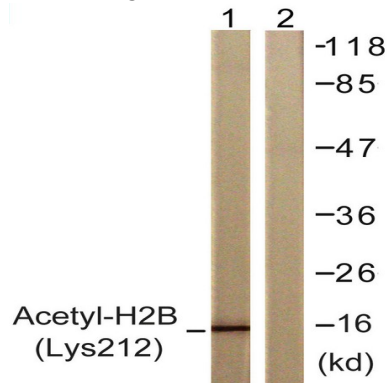


Immunohistochemistry analysis of paraffin-embedded human lung carcinoma tissue, using Histone H2B (Acetyl-Lys12)

**Product Name: Acetyl Histone H2B (K12) Rabbit  
Polyclonal Antibody  
Catalog #: APRab04162**



Antibody. The picture on the right is blocked with the synthesized peptide.



Western blot analysis of lysates from COS7 cells, treated with TSA 400nM 24h, using Histone H2B (Acetyl-Lys12) Antibody.  
The lane on the right is blocked with the synthesized peptide.

### Note

For research use only.