

Product Name: PINK1 Rabbit Polyclonal Antibody
Catalog #: APRab04152



Summary

Production Name	PINK1 Rabbit Polyclonal Antibody
Description	Primary antibody
Host	Rabbit
Application	WB
Reactivity	Human,Mouse,Rat

Performance

Conjugation	Unconjugated
Modification	Unmodified
Isotype	IgG
Clonality	Polyclonal Antibody
Form	Liquid
Storage	Store at 4°C short term. Aliquot and store at -20°C long term. Avoid freeze/thaw cycles.
Buffer	Liquid in PBS containing 50% glycerol, 0.5% BSA and 0.02% sodium azide, pH 7.3.
Purification	Affinity Purified

Immunogen

Gene Name	PINK1
Alternative Names	BRPK; PARK6
Gene ID	65018
SwissProt ID	Q9BXM7

Application

Dilution Ratio	WB: 1/500-1/1000
Molecular Weight	Calculated MW: 63 kDa; Observed MW: 63 kDa

Background

Serine/threonine-protein kinase which protects against mitochondrial dysfunction during cellular stress by phosphorylating

Product Name: PINK1 Rabbit Polyclonal Antibody
Catalog #: APRab04152

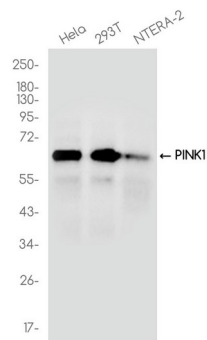


mitochondrial proteins such as PRKN and DNM1L, to coordinate mitochondrial quality control mechanisms that remove and replace dysfunctional mitochondrial components.

Research Area

Neuroscience

Image Data



Western blot analysis of PINK1 in various cell lines lysates using PINK1 antibody.

Note

For research use only.