

## Summary

<b>Production Name</b>	CD31 Rabbit Polyclonal Antibody
<b>Description</b>	Primary antibody
<b>Host</b>	Rabbit
<b>Application</b>	WB,IHC-F,IHC-P,ICC/IF,ELISA
<b>Reactivity</b>	Human,Mouse

## Performance

<b>Conjugation</b>	Unconjugated
<b>Modification</b>	Unmodified
<b>Isotype</b>	IgG
<b>Clonality</b>	Polyclonal Antibody
<b>Form</b>	Liquid
<b>Storage</b>	Store at 4°C short term. Aliquot and store at -20°C long term. Avoid freeze/thaw cycles.
<b>Buffer</b>	Liquid in PBS containing 50% glycerol, 0.5% BSA and 0.02% sodium azide, pH 7.3.
<b>Purification</b>	Affinity Purified

## Immunogen

<b>Gene Name</b>	PECAM1
<b>Alternative Names</b>	Platelet endothelial cell adhesion molecule; PECAM-1; EndoCAM; GPIIA <sup>v</sup> ; PECA1; CD antigen CD31
<b>Gene ID</b>	5175
<b>SwissProt ID</b>	P16284

## Application

<b>Dilution Ratio</b>	WB: 1/500-1/1000 IHC: 1/50-1/100 IF: 1/50-1/200 ELISA: 1/10000
<b>Molecular Weight</b>	Calculated MW: 83 kDa; Observed MW: 130-140 kDa

## Background

**Product Name: CD31 Rabbit Polyclonal Antibody**  
**Catalog #: APRab03853**

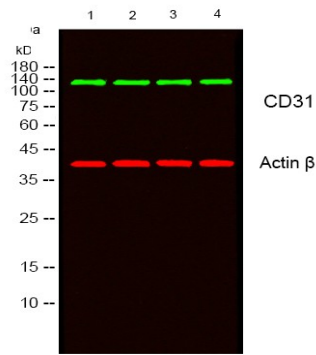


PECAM-1 a cell adhesion molecule expressed on platelets and at endothelial cell intercellular junctions. Plays a role in modulation of integrin-mediated cell adhesion, transendothelial migration, angiogenesis, apoptosis, cell migration, negative regulation of immune cell signaling, autoimmunity, macrophage phagocytosis, IgE-mediated anaphylaxis and thrombosis. Undergoes alternative splicing, generating multiple isoforms in vascular beds of various tissues.

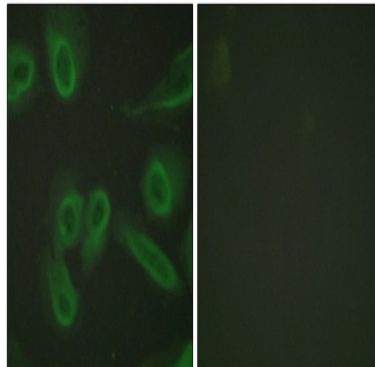
## Research Area

Cardiovascular

## Image Data

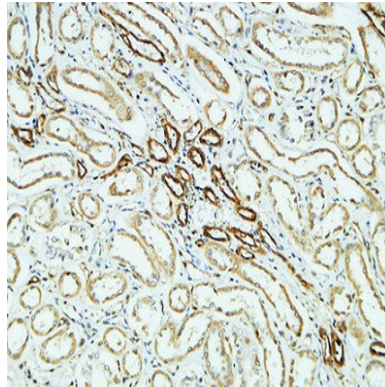


Western blot analysis of CD31 in HepG2, K562, L929, mouse brain lysates using CD31 antibody.



Immunofluorescence analysis of CD31 in HeLa using CD31 antibody. The picture on the right is blocked using synthesized peptide.

**Product Name: CD31 Rabbit Polyclonal Antibody**  
**Catalog #: APRab03853**



Immunohistochemistry analysis of paraffin-embedded CD31 in paraffin-embedded Human kidney using CD31 antibody.  
High-pressure and temperature Sodium Citrate pH 6.0 was used for antigen retrieval.

**Note**

For research use only.