

Product Name: Collagen I alpha 2 Rabbit Polyclonal Antibody
Catalog #: APRab03845

Summary

Production Name	Collagen I alpha 2 Rabbit Polyclonal Antibody
Description	Primary antibody
Host	Rabbit
Application	WB,IHC-F,IHC-P,ICC/IF,ELISA
Reactivity	Human,Mouse,Rat

Performance

Conjugation	Unconjugated
Modification	Unmodified
Isotype	IgG
Clonality	Polyclonal Antibody
Form	Liquid
Storage	Store at 4°C short term. Aliquot and store at -20°C long term. Avoid freeze/thaw cycles.
Buffer	Liquid in PBS containing 50% glycerol, 0.5% BSA and 0.02% sodium azide, pH 7.3.
Purification	Affinity Purified

Immunogen

Gene Name	COL1A2
Alternative Names	Collagen alpha-2(I) chain (Alpha-2 type I collagen)
Gene ID	1278
SwissProt ID	P08123

Application

Dilution Ratio	WB: 1/500-1/1000 IHC: 1/50-1/100 IF: 1/50-1/200 ELISA: 1/10000
Molecular Weight	Calculated MW: 129 kDa; Observed MW: 200 kDa

Background

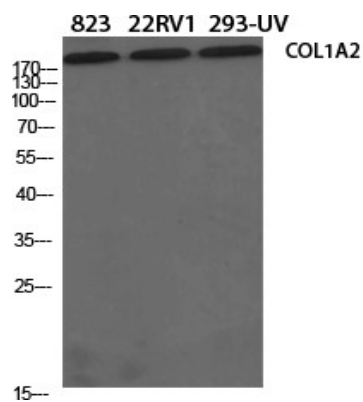
Product Name: Collagen I alpha 2 Rabbit Polyclonal Antibody
Catalog #: APRab03845

This gene encodes one of the chains for type I collagen, the fibrillar collagen found in most connective tissues. Mutations in this gene are associated with osteogenesis imperfecta, Ehlers-Danlos syndrome, idiopathic osteoporosis, and atypical Marfan syndrome.

Research Area

Cell Biology

Image Data



Western blot analysis of Collagen I alpha 2 in 823, 22RV1, 293UV lysates using Collagen I alpha 2 antibody.

Note

For research use only.