

Summary

Production Name	Claudin 1 Rabbit Polyclonal Antibody
Description	Primary antibody
Host	Rabbit
Application	WB,IHC-F,IHC-P,ICC/IF,ELISA
Reactivity	Human,Mouse,Rat

Performance

Conjugation	Unconjugated
Modification	Unmodified
Isotype	IgG
Clonality	Polyclonal Antibody
Form	Liquid
Storage	Store at 4°C short term. Aliquot and store at -20°C long term. Avoid freeze/thaw cycles.
Buffer	Liquid in PBS containing 50% glycerol, 0.5% BSA and 0.02% sodium azide, pH 7.3.
Purification	Affinity Chromatography

Immunogen

Gene Name	CLDN1
Alternative Names	CLDN1; CLD1; SEMP1; Claudin-1; Senescence-associated epithelial membrane protein
Gene ID	9076
SwissProt ID	O95832

Application

Dilution Ratio	WB: 1/500-1/1000 IHC: 1/50-1/100 IF: 1/50-1/200 ELISA: 1/10000
Molecular Weight	Calculated MW: 23 kDa; Observed MW: 23 kDa

Background

The claudin family is composed of 23 integral membrane proteins, and their expression, which varies among tissue types,

Product Name: Claudin 1 Rabbit Polyclonal Antibody
Catalog #: APRab03842

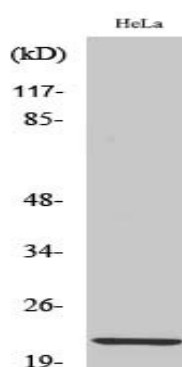


may determine both the strength and properties of the epithelial barrier. Alteration in claudin protein expression pattern is associated with several types of cancer. Claudin-1 is expressed primarily in keratinocytes and normal mammary epithelial cells, but is absent or reduced in breast carcinomas and breast cancer cell lines.

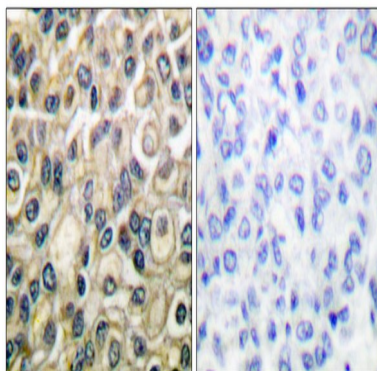
Research Area

Cell Biology

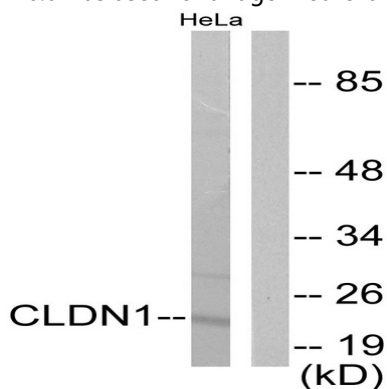
Image Data



Western blot analysis of Claudin 1 in HeLa lysates using Claudin 1 antibody.



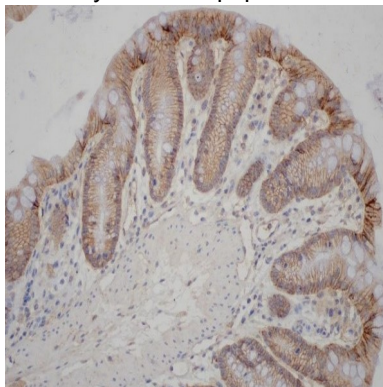
Immunohistochemistry analysis of paraffin-embedded Human breast carcinoma tissue, using Claudin 1 antibody. High-pressure and temperature Sodium Citrate pH 6.0 was used for antigen retrieval. Sample with blocking peptide on the right.



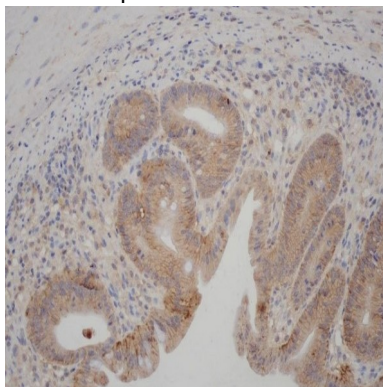
Product Name: Claudin 1 Rabbit Polyclonal Antibody
Catalog #: APRab03842



Western blot analysis of Claudin 1 in HeLa lysates using Claudin 1 antibody. The lane on the right is blocked with the synthesized peptide.



Immunohistochemistry analysis of paraffin-embedded Mouse Colon tissue, using Claudin 1 antibody. High-pressure and temperature Tris-EDTA pH 9.0 was used for antigen retrieval.



Immunohistochemistry analysis of paraffin-embedded Mouse Colon tissue, using Claudin 1 antibody. High-pressure and temperature Tris-EDTA pH 9.0 was used for antigen retrieval.

Note

For research use only.