

Summary

Production Name	Cyclin E1 Rabbit Polyclonal Antibody
Description	Primary antibody
Host	Rabbit
Application	WB,IHC-F,IHC-P,ICC/IF,ELISA
Reactivity	Human,Mouse,Rat

Performance

Conjugation	Unconjugated
Modification	Unmodified
Isotype	IgG
Clonality	Polyclonal Antibody
Form	Liquid
Storage	Store at 4°C short term. Aliquot and store at -20°C long term. Avoid freeze/thaw cycles.
Buffer	Liquid in PBS containing 50% glycerol, 0.5% BSA and 0.02% sodium azide, pH 7.3.
Purification	Affinity Purified

Immunogen

Gene Name	CCNE1
Alternative Names	CCNE1; CCNE; G1/S-specific cyclin-E1
Gene ID	898
SwissProt ID	P24864

Application

Dilution Ratio	WB: 1/500-1/1000 IHC: 1/50-1/100 IF: 1/50-1/200 ELISA: 1/10000
Molecular Weight	Calculated MW: 47 kDa; Observed MW: 47 kDa

Background

Essential for the control of the cell cycle at the G1/S (start) transition. a member of the highly conserved cyclin family,

Product Name: Cyclin E1 Rabbit Polyclonal Antibody
Catalog #: APRab03827

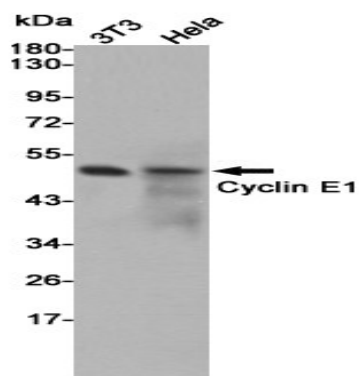


whose members are characterized by a dramatic periodicity in protein abundance through the cell cycle. Cyclins function as regulators of CDK kinases.

Research Area

Cell Biology

Image Data



Western blot analysis of Cyclin E1 in 3T3 and HeLa lysates using Cyclin E1 antibody.

Note

For research use only.