
Summary

Production Name	Cyclin D1 Rabbit Polyclonal Antibody
Description	Primary antibody
Host	Rabbit
Application	WB,IHC-P,IP
Reactivity	Human,Mouse,Rat

Performance

Conjugation	Unconjugated
Modification	Unmodified
Isotype	IgG
Clonality	Polyclonal Antibody
Form	Liquid
Storage	Store at 4°C short term. Aliquot and store at -20°C long term. Avoid freeze/thaw cycles.
Buffer	50mM Tris-Glycine(pH 7.4), 0.15M NaCl, 40% Glycerol, 0.01% Sodium azide and 0.05% BSA
Purification	Affinity Purified

Immunogen

Gene Name	CCND1
Alternative Names	CCND1; BCL1; D11S287E; PRAD1; U21B31; Cyclin D1
Gene ID	595
SwissProt ID	P24385

Application

Dilution Ratio	WB: 1/500-1/1000 IHC: 1/50-1/100 IP: 1/20
Molecular Weight	Calculated MW: 34 kDa; Observed MW: 34 kDa

Background

Product Name: Cyclin D1 Rabbit Polyclonal Antibody
Catalog #: APRab03732

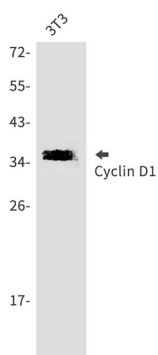


Phosphorylation of RB1 allows dissociation of the transcription factor E2F from the RB/E2F complex and the subsequent transcription of E2F target genes which are responsible for the progression through the G1 phase. Hypophosphorylates RB1 in early G1 phase. Cyclin D-CDK4 complexes are major integrators of various mitogenic and antimitogenic signals.

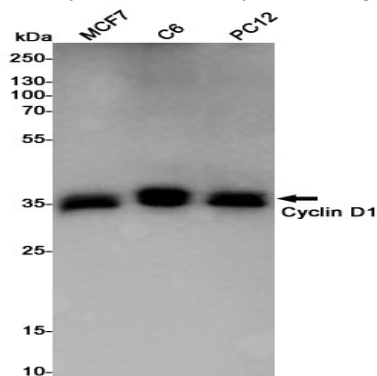
Research Area

Cell Biology

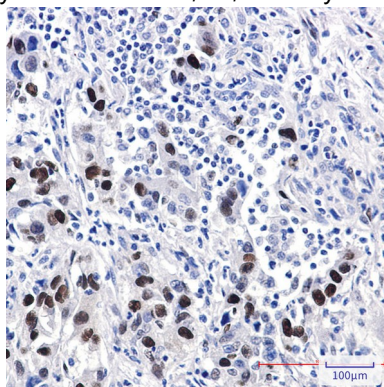
Image Data



Western blot analysis of Cyclin D1 in 3T3 lysates using Cyclin D1 antibody.



Western blot analysis of Cyclin D1 in MCF-7, C6, PC-12 lysates using Cyclin D1 antibody.



Immunohistochemistry analysis of paraffin-embedded Human lung cancer using Cyclin D1 antibody. High-pressure and

Product Name: Cyclin D1 Rabbit Polyclonal Antibody
Catalog #: APRab03732



temperature Sodium Citrate pH 6.0 was used for antigen retrieval.

Note

For research use only.