

Product Name: ATG7 Rabbit Polyclonal Antibody
Catalog #: APRab03731



Summary

Production Name	ATG7 Rabbit Polyclonal Antibody
Description	Primary antibody
Host	Rabbit
Application	WB,ICC/IF
Reactivity	Human,Mouse,Rat

Performance

Conjugation	Unconjugated
Modification	Unmodified
Isotype	IgG
Clonality	Polyclonal Antibody
Form	Liquid
Storage	Store at 4°C short term. Aliquot and store at -20°C long term. Avoid freeze/thaw cycles.
Buffer	Rabbit IgG in phosphate buffered saline , pH 7.4, 150mM NaCl, 0.02% sodium azide and 50% glycerol.
Purification	Affinity Chromatography

Immunogen

Gene Name	ATG7
Alternative Names	hAGP7; Ubiquitin-activating enzyme E1-like protein; APG7L
Gene ID	10533
SwissProt ID	O95352

Application

Dilution Ratio	WB: 1/500-1/1000 IF: 1/50-1/200
Molecular Weight	Calculated MW: 78 kDa; Observed MW: 78 kDa

Background

Product Name: ATG7 Rabbit Polyclonal Antibody
Catalog #: APRab03731

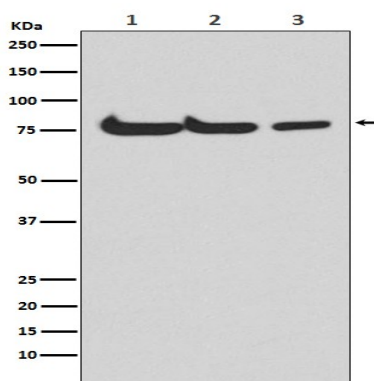


The molecular machinery of autophagy was largely discovered in yeast and referred to as autophagy-related (Atg) genes. Formation of the autophagosome involves a ubiquitin-like conjugation system in which Atg12 is covalently bound to Atg5 and targeted to autophagosome vesicles. This conjugation reaction is mediated by the ubiquitin E1-like enzyme Atg7 and the E2-like enzyme Atg10.

Research Area

Cell Biology

Image Data



Western blot analysis of Atg7(Apg7) in (1) HepG2 lysates; (2) mouse spleen lysates; (3) rat kidney lysates using ATG7 antibody.

Note

For research use only.