

**Product Name: Phospho-EGFR (Tyr1068) Rabbit
Polyclonal Antibody
Catalog #: APRab03635**

Summary

Production Name	Phospho-EGFR (Tyr1068) Rabbit Polyclonal Antibody
Description	Primary antibody
Host	Rabbit
Application	WB
Reactivity	Human

Performance

Conjugation	Unconjugated
Modification	Phosphorylated
Isotype	IgG
Clonality	Polyclonal Antibody
Form	Liquid
Storage	Store at 4°C short term. Aliquot and store at -20°C long term. Avoid freeze/thaw cycles.
Buffer	Liquid in PBS containing 50% glycerol, 0.5% BSA and 0.02% sodium azide, pH 7.3.
Purification	Affinity Purified

Immunogen

Gene Name	EGFR
Alternative Names	EGFR; ERBB; ERBB1; HER1; Epidermal growth factor receptor; Proto-oncogene c-ErbB-1; Receptor tyrosine-protein kinase erbB-1
Gene ID	1956
SwissProt ID	P00533

Application

Dilution Ratio	WB: 1/500-1/1000
Molecular Weight	Calculated MW: 134 kDa; Observed MW: 175 kDa

Product Name: Phospho-EGFR (Tyr1068) Rabbit Polyclonal Antibody
Catalog #: AP Rab03635

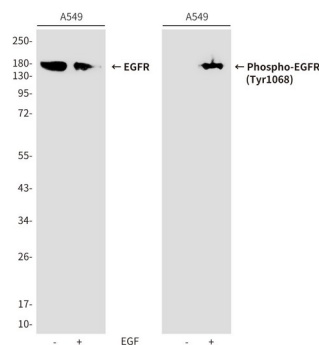
Background

EGFR is a receptor tyrosine kinase. Receptor for epidermal growth factor (EGF) and related growth factors including TGF- α , amphiregulin, betacellulin, heparin-binding EGF-like growth factor, GP30 and vaccinia virus growth factor. Is involved in the control of cell growth and differentiation. . A single-pass transmembrane tyrosine kinase. Ligand binding to this receptor results in receptor dimerization, autophosphorylation (in trans), activation of various downstream signaling molecules and lysosomal degradation.

Research Area

Signal Transduction

Image Data



Western blot analysis of Phospho-EGFR (Tyr1068) in A549, untreated or EGFstimulated lysates using Phospho-EGF Receptor (Tyr1068) antibody(right) and EGF Receptor antibody(left).

Note

For research use only.