

**Product Name: SOD2 Rabbit Polyclonal Antibody**  
**Catalog #: APRab03632**



## Summary

|                        |                                 |
|------------------------|---------------------------------|
| <b>Production Name</b> | SOD2 Rabbit Polyclonal Antibody |
| <b>Description</b>     | Primary antibody                |
| <b>Host</b>            | Rabbit                          |
| <b>Application</b>     | WB                              |
| <b>Reactivity</b>      | Human,Mouse,Rat,Monkey          |

## Performance

|                     |  |
|---------------------|--|
| <b>Conjugation</b>  | Unconjugated   |
| <b>Modification</b> | Unmodified   |
| <b>Isotype</b>      | IgG  |
| <b>Clonality</b>    | Polyclonal Antibody  |
| <b>Form</b>         | Liquid   |
| <b>Storage</b>      | Store at 4°C short term. Aliquot and store at -20°C long term. Avoid freeze/thaw cycles. |
| <b>Buffer</b>       | Liquid in PBS containing 50% glycerol, 0.5% BSA and 0.02% sodium azide, pH 7.3.          |
| <b>Purification</b> | Affinity Purified  |

## Immunogen

|                          |   |
|--------------------------|---|
| <b>Gene Name</b>         | SOD2                                    |
| <b>Alternative Names</b> | IPOB; IPO-B; MNSOD; MVCD6; Mn-SOD; SOD2 |
| <b>Gene ID</b>           | 6648                                    |
| <b>SwissProt ID</b>      | P04179                                  |

## Application

|                         |  |
|-------------------------|--|
| <b>Dilution Ratio</b>   | WB: 1/500-1/1000                           |
| <b>Molecular Weight</b> | Calculated MW: 25 kDa; Observed MW: 25 kDa |

## Background

SOD-2 is a homotetrameric manganese enzyme (also known as MnSOD) that functions in the mitochondrion. ROS are

**Product Name: SOD2 Rabbit Polyclonal Antibody**  
**Catalog #: APRab03632**

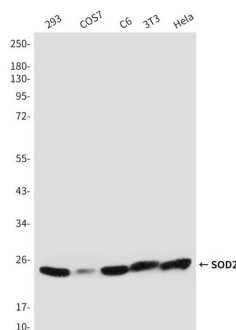


implicated in a wide range of degenerative processes, including Alzheimer' s disease, Parkinson' s disease and ischemic heart disease. Homozygous mutant mice, which lack SOD-2, exhibit dilated cardiomyopathy, accumulation of lipid in liver and skeletal muscle, metabolic acidosis, oxidative DNA damage and respiratory chain deficiencies in heart and skeletal muscle.

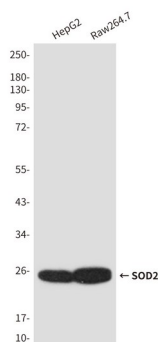
## Research Area

Cell Biology

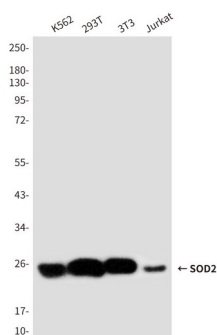
## Image Data



Western blot analysis of SOD2 in 293, COS7, C6, 3T3 and HeLa lysates using SOD2 antibody.



Western blot analysis of SOD2 in HepG2 and Raw264.7 lysates using SOD2 antibody.



**Product Name: SOD2 Rabbit Polyclonal Antibody**  
**Catalog #: APRab03632**



---

Western blot analysis of SOD2 in K562, 293T, 3T3 and Jurkat lysates using SOD2 antibody.

**Note**

For research use only.