

**Product Name: Acetyl-Lysine Rabbit Polyclonal Antibody**  
**Catalog #: APRab03406**



---

## Summary

<b>Production Name</b>	Acetyl-Lysine Rabbit Polyclonal Antibody
<b>Description</b>	Primary antibody
<b>Host</b>	Rabbit
<b>Application</b>	WB
<b>Reactivity</b>	Species independent

## Performance

<b>Conjugation</b>	Unconjugated
<b>Modification</b>	Acetylated
<b>Isotype</b>	IgG
<b>Clonality</b>	Polyclonal Antibody
<b>Form</b>	Liquid
<b>Storage</b>	Store at 4°C short term. Aliquot and store at -20°C long term. Avoid freeze/thaw cycles.
<b>Buffer</b>	Liquid in PBS containing 50% glycerol, 0.5% BSA and 0.02% sodium azide, pH 7.3.
<b>Purification</b>	Affinity Purified

## Immunogen

<b>Gene Name</b>	-
<b>Alternative Names</b>	-
<b>Gene ID</b>	-
<b>SwissProt ID</b>	-

## Application

<b>Dilution Ratio</b>	WB: 1/500-1/1000
<b>Molecular Weight</b>	Refer to figures

## Background

Acetylation of lysine residues within proteins has emerged as an important mechanism used by cells to overcome this

**Product Name: Acetyl-Lysine Rabbit Polyclonal Antibody**  
**Catalog #: APRab03406**

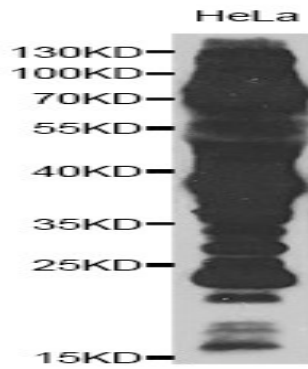
---

repression.

## Research Area

Epigenetics and Nuclear Signaling

## Image Data



Western blot analysis of Acetyl-Lysine in HeLa lysates using Pan Acetyl-Lysine antibody.

## Note

For research use only.