

## Summary

<b>Production Name</b>	LC3B Rabbit Polyclonal Antibody
<b>Description</b>	Primary antibody
<b>Host</b>	Rabbit
<b>Application</b>	WB,IHC-F,IHC-P,ICC/IF
<b>Reactivity</b>	Human,Mouse,Rat

## Performance

<b>Conjugation</b>	Unconjugated
<b>Modification</b>	Unmodified
<b>Isotype</b>	IgG
<b>Clonality</b>	Polyclonal Antibody
<b>Form</b>	Liquid
<b>Storage</b>	Store at 4°C short term. Aliquot and store at -20°C long term. Avoid freeze/thaw cycles.
<b>Buffer</b>	Liquid in PBS containing 50% glycerol, 0.5% BSA and 0.02% sodium azide, pH 7.3.
<b>Purification</b>	Affinity Purified

## Immunogen

<b>Gene Name</b>	MAP1LC3B
<b>Alternative Names</b>	MAP1LC3B
<b>Gene ID</b>	81631
<b>SwissProt ID</b>	Q9GZQ8

## Application

<b>Dilution Ratio</b>	WB: 1/500-1/1000 IHC: 1/50-1/100 IF: 1/50-1/200
<b>Molecular Weight</b>	Calculated MW: 15 kDa; Observed MW: 14,16 kDa

## Background

Ubiquitin-like modifier involved in formation of autophagosomal vacuoles (autophagosomes). Plays a role in mitophagy

**Product Name: LC3B Rabbit Polyclonal Antibody**  
**Catalog #: APRab03405**

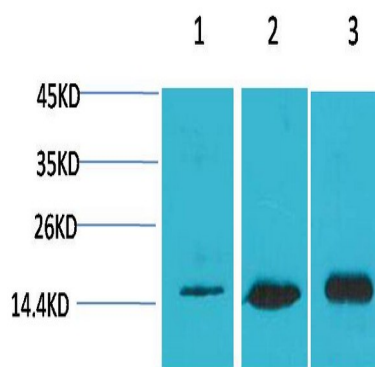


which contributes to regulate mitochondrial quantity and quality by eliminating the mitochondria to a basal level to fulfill cellular energy requirements and preventing excess ROS production.

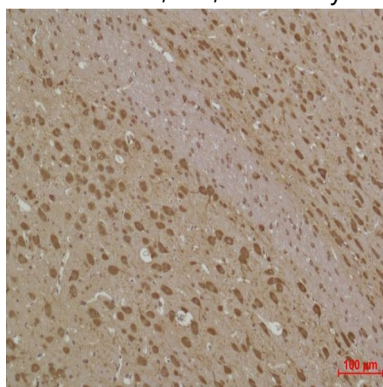
## Research Area

Signal Transduction

## Image Data



Western blot analysis of LC3B in Hela, 3T3, rat Brain lysates using LC3B antibody.



Immunohistochemistry analysis of paraffin-embedded rat Brain Tissue using LC3B antibody. High-pressure and temperature Sodium Citrate pH 6.0 was used for antigen retrieval.

## Note

For research use only.