

Summary

Production Name	GPR91 Rabbit Polyclonal Antibody
Description	Primary antibody
Host	Rabbit
Application	WB,ICC/IF,ELISA
Reactivity	Human,Mouse,Rat

Performance

Conjugation	Unconjugated
Modification	Unmodified
Isotype	IgG
Clonality	Polyclonal Antibody
Form	Liquid
Storage	Store at 4°C short term. Aliquot and store at -20°C long term. Avoid freeze/thaw cycles.
Buffer	Liquid in PBS containing 50% glycerol, 0.5% BSA and 0.02% sodium azide, pH 7.3.
Purification	Affinity Chromatography

Immunogen

Gene Name	SUCNR1
Alternative Names	GPR91
Gene ID	56670
SwissProt ID	Q9BXA5

Application

Dilution Ratio	WB: 1/500-1/1000 IF: 1/50-1/200 ELISA: 1/10000
Molecular Weight	Calculated MW: 39 kDa; Observed MW: 39 kDa

Background

Receptor for succinate.

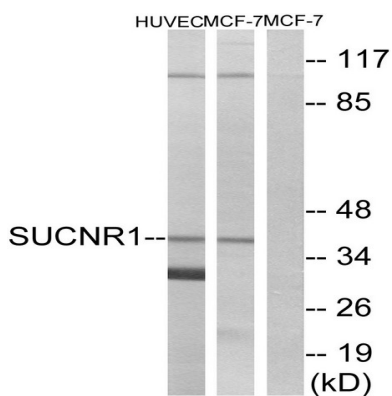
Product Name: GPR91 Rabbit Polyclonal Antibody
Catalog #: APRab03404



Research Area

Signal Transduction

Image Data



Western blot analysis of GPR91 in HUVEC and MCF-7 lysates using SUCNR1 antibody. The lane on the right is blocked with the synthesized peptide.

Note

For research use only.