

Summary

Production Name	Raf1 Rabbit Polyclonal Antibody
Description	Primary antibody
Host	Rabbit
Application	WB,IHC-F,IHC-P,ICC/IF,ELISA
Reactivity	Human,Mouse,Rat

Performance

Conjugation	Unconjugated
Modification	Unmodified
Isotype	IgG
Clonality	Polyclonal Antibody
Form	Liquid
Storage	Store at 4°C short term. Aliquot and store at -20°C long term. Avoid freeze/thaw cycles.
Buffer	Liquid in PBS containing 50% glycerol, 0.5% BSA and 0.02% sodium azide, pH 7.3.
Purification	Affinity Purified

Immunogen

Gene Name	RAF1
Alternative Names	RAF1; RAF; RAF proto-oncogene serine/threonine-protein kinase; Proto-oncogene c-RAF; cRaf; Raf-1
Gene ID	5894
SwissProt ID	P04049

Application

Dilution Ratio	WB: 1/500-1/1000 IHC: 1/50-1/100 IF: 1/50-1/200 ELISA: 1/10000
Molecular Weight	Calculated MW: 73 kDa; Observed MW: 73 kDa

Background

Product Name: Raf1 Rabbit Polyclonal Antibody
Catalog #: APRab03403

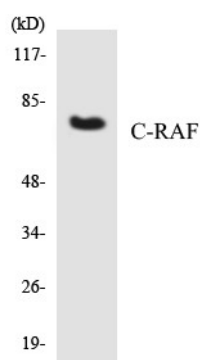


Raf-1 is a MAP kinase kinase kinase (MAP3K) which functions downstream of the Ras family of membrane associated GTPases to which it binds directly. Once activated Raf-1 can phosphorylate to activate the dual specificity protein kinases MEK1 and MEK2 which in turn phosphorylate to activate the serine/threonine specific protein kinases ERK1 and ERK2.

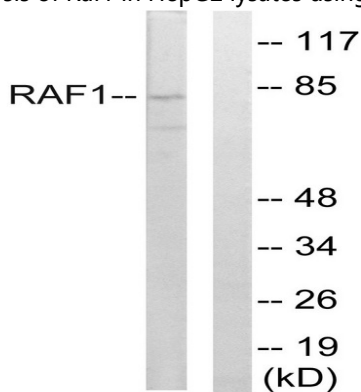
Research Area

Signal Transduction

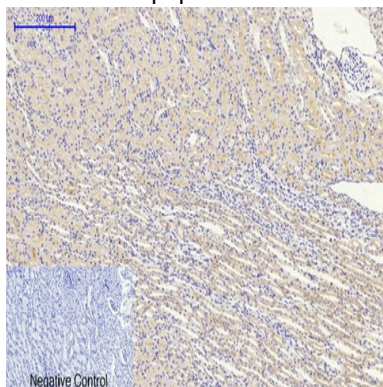
Image Data



Western blot analysis of Raf1 in HepG2 lysates using Raf1 antibody.



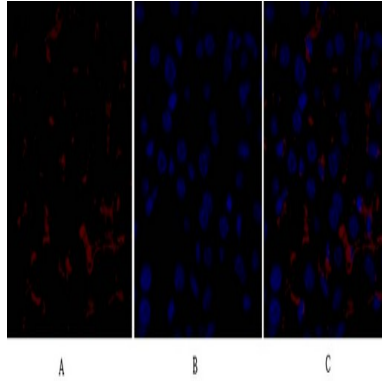
Western blot analysis of Raf1 in rat liver lysates using Raf1 antibody. The lane on the right is blocked with the synthesized peptide.



Product Name: Raf1 Rabbit Polyclonal Antibody
Catalog #: APRab03403



Immunohistochemistry analysis of paraffin-embedded rat kidney tissue using Raf1 antibody. High-pressure and temperature Sodium Citrate pH 6.0 was used for antigen retrieval.



Immunofluorescence analysis of Raf1 in mouse liver using Raf1 antibody(red),and DAPI (blue).

Note

For research use only.