

Product Name: p300 Rabbit Polyclonal Antibody
Catalog #: APRab03402



Summary

Production Name	p300 Rabbit Polyclonal Antibody
Description	Primary antibody
Host	Rabbit
Application	WB,IHC-F,IHC-P,ICC/IF,ELISA
Reactivity	Human,Mouse,Rat

Performance

Conjugation	Unconjugated
Modification	Unmodified
Isotype	IgG
Clonality	Polyclonal Antibody
Form	Liquid
Storage	Store at 4°C short term. Aliquot and store at -20°C long term. Avoid freeze/thaw cycles.
Buffer	Liquid in PBS containing 50% glycerol, 0.5% BSA and 0.02% sodium azide, pH 7.3.
Purification	Affinity Purified

Immunogen

Gene Name	EP300
Alternative Names	EP300; P300; Histone acetyltransferase p300; p300 HAT; E1A-associated protein p300
Gene ID	2033
SwissProt ID	Q09472

Application

Dilution Ratio	WB: 1/500-1/1000 IHC: 1/50-1/100 IF: 1/50-1/200 ELISA: 1/10000
Molecular Weight	Calculated MW: 264 kDa; Observed MW: 300 kDa

Background

EP300: E1A binding protein p300. This gene encodes the adenovirus E1A-associated cellular p300 transcriptional co-

Product Name: p300 Rabbit Polyclonal Antibody
Catalog #: APRab03402

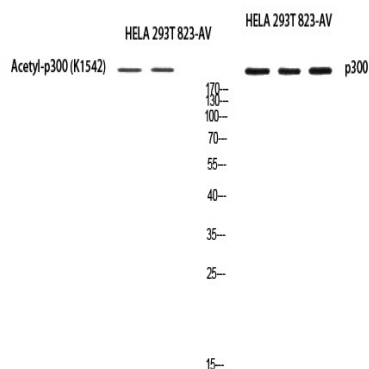


activator protein. It functions as histone acetyltransferase that regulates transcription via chromatin remodeling and is important in the processes of cell proliferation and differentiation. It mediates cAMP-gene regulation by binding specifically to phosphorylated CREB protein. This gene has also been identified as a co-activator of HIF1A (hypoxia-inducible factor 1 alpha), and thus plays a role in the stimulation of hypoxia-induced genes such as VEGF. Defects in this gene are a cause of Rubinstein-Taybi syndrome and may also play a role in epithelial cancer.

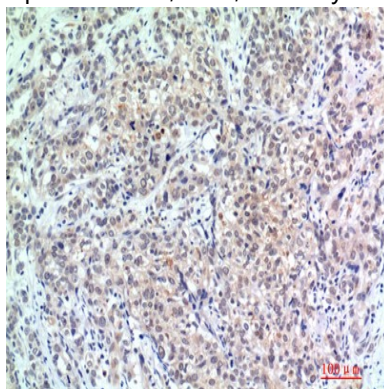
Research Area

Epigenetics and Nuclear Signaling

Image Data



Western blot analysis of p300 in HELA, 293T, 823AV lysates using p300 antibody.



Immunohistochemistry analysis of paraffin-embedded Human breast cancer using p300 antibody. High-pressure and temperature Sodium Citrate pH 6.0 was used for antigen retrieval.

Note

For research use only.